

P-11282-2

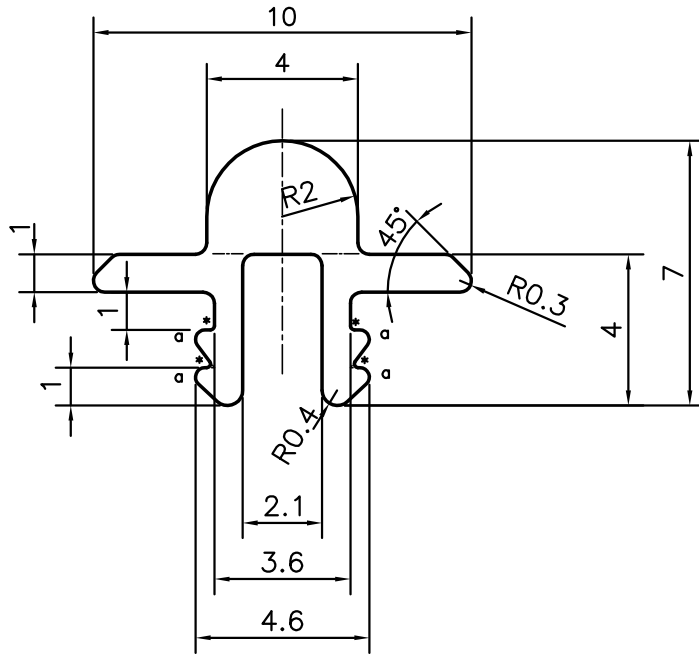
S3273

22934



EXPOSED SURFACE

SCALE- 1:1



a = RADIUS 0.25 mm. (4 PLACES)
 * = RADIUS 0.1 mm. (4 PLACES)

ROUND OFF ALL SHARP CORNERS WITH 0.30 mm.



SYMBOL OF QUALITY
AN ISO 9001 COMPANY

JINDAL ALUMINIUM LTD.
 BANGALORE-560073 (INDIA)

| | NAME | DATE |
|----------|------------|------------|
| DRAWN | PARVESH | 08-05-2012 |
| CHECKED | | |
| APPROVED | R.G.PAREKH | 15-05-2012 |

1. ALL DIMENSIONS ARE IN mm.
2. ROUND OFF ALL SHARP CORNERS WITH 0.30 mm.
3. TOLERANCES WILL BE AS PER IS:3965-1981, UNLESS OTHERWISE SPECIFIED

| | |
|----------------------|--------|
| SCALE | 5:1 |
| AREA mm ² | 23.533 |
| PERIMETER mm. | 39.799 |
| WEIGHT kg/m | 0.064 |

| PARTY'S NAME | TORFENSTER SYSTEMS (INDIA) PVT. LTD., BANGALORE | DRAWING No. | SECTION No. |
|---------------------|---|-------------|-------------|
| PARTY'S DRAWING No. | L9707 | P-11282-2 | - |
| ALLOY & TEMPER | 6063 T6 | S3273 | S3273 |
| | | 22934 | 22934 |
| DESCRIPTION | MISC. SECTION | | |