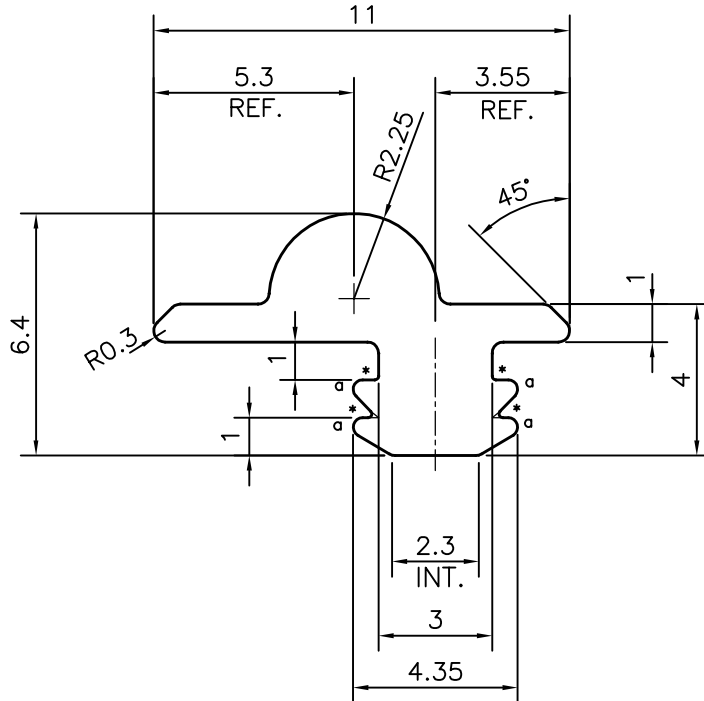
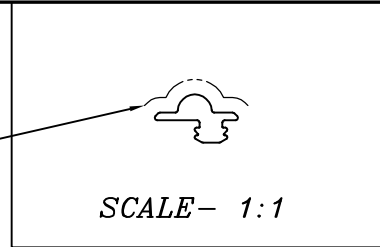


P-11283-2

S3274

22940

EXPOSED SURFACE



a = RADIUS 0.25 mm. ( 4 PLACES)  
 \* = RADIUS 0.1 mm. ( 4 PLACES)

ROUND OFF ALL SHARP CORNERS WITH 0.30 mm.



SYMBOL OF QUALITY  
 AN ISO 9001 COMPANY

**JINDAL ALUMINIUM LTD.**  
 BANGALORE-560073 (INDIA)

	NAME	DATE
DRAWN	PARVESH	08-05-2012
CHECKED		
APPROVED	R.G.PAREKH	15-05-2012

1. ALL DIMENSIONS ARE IN mm.
2. ROUND OFF ALL SHARP CORNERS WITH 0.30 mm.
3. TOLERANCES WILL BE AS PER IS:3965-1981 UNLESS OTHERWISE SPECIFIED

SCALE	5:1
AREA mm <sup>2</sup>	29.957
PERIMETER mm.	33.896
WEIGHT kg/m	0.081

PARTY'S NAME	TORFENSTER SYSTEMS (INDIA) PVT. LTD., BANGALORE	DRAWING No.	SECTION No.
PARTY'S DRAWING No.	L9699	P-11283-2	-
ALLOY & TEMPER	6063 T6	S3274	S3274
		22940	22940
DESCRIPTION	MISC. SECTION		