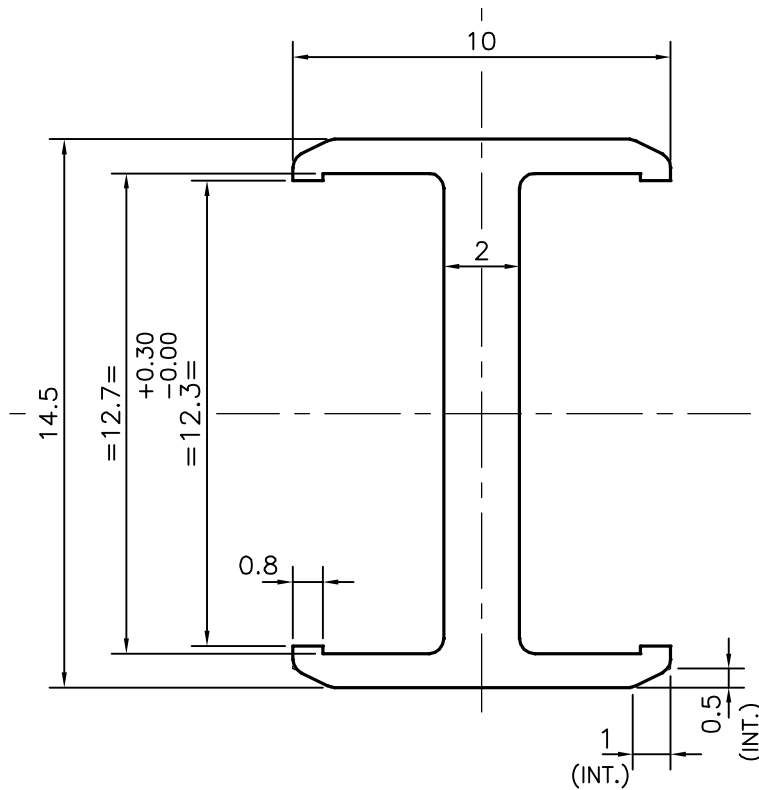
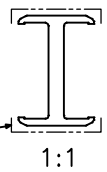


P-13342

S3998

22988

EXPOSED
SURFACE

TOLERANCES ON OVERALL WIDTHS & WIDTHS ACROSS FLATS OF BARS, & REGULAR SECTIONS

UPTO 6.40mm - ± 0.20
 UPTO 10.0mm - ± 0.23
 UPTO 12.0mm - ± 0.25
 UPTO 16.0mm - ± 0.28
 UPTO 25.0mm - ± 0.30

UPTO 32.0mm - ± 0.38
 UPTO 50.0mm - ± 0.46
 UPTO 60.0mm - ± 0.53
 UPTO 80.0mm - ± 0.69
 UPTO 100.0mm - ± 0.75

UPTO 120.0mm - ± 0.85
 UPTO 160.0mm - ± 1.02
 UPTO 200.0mm - ± 1.14
 UPTO 250.0mm - ± 1.40
 UPTO 320.0mm - ± 1.70

1. STRAIGHTNESS= 1.7mm/M
 2. TWIST= 1.7mm/M
 3. ANGULARITY= $\pm 1.5^\circ$
 4. FLATNESS = ± 0.18 mm



SYMBOL OF QUALITY
AN ISO 9001 COMPANY

JINDAL ALUMINIUM LTD.
 BANGALORE-560073 (INDIA)

	NAME	DATE
DRAWN	SRIYATHSA	16-01-2014
CHECKED		
APPROVED	S.S.GARG	27-01-2014

- ALL DIMENSIONS ARE IN mm.
- ROUND OFF ALL SHARP CORNERS WITH 0.40 mm.
- TOLERANCES WILL BE AS PER IS:3965-1981, UNLESS OTHERWISE SPECIFIED

SCALE	5:1
AREA mm ²	43.133
PERIMETER mm.	64.166
WEIGHT kg/m	0.116

PARTY'S NAME GSC GLASS PVT.LTD., NOIDA

PARTY'S DRAWING No. M50451 REV A6

ALLOY & TEMPER 6063 T6

DESCRIPTION MISC. I - SECTION

DRAWING No.	SECTION No.
P-13342	-
S3998	S3998
22988	22988