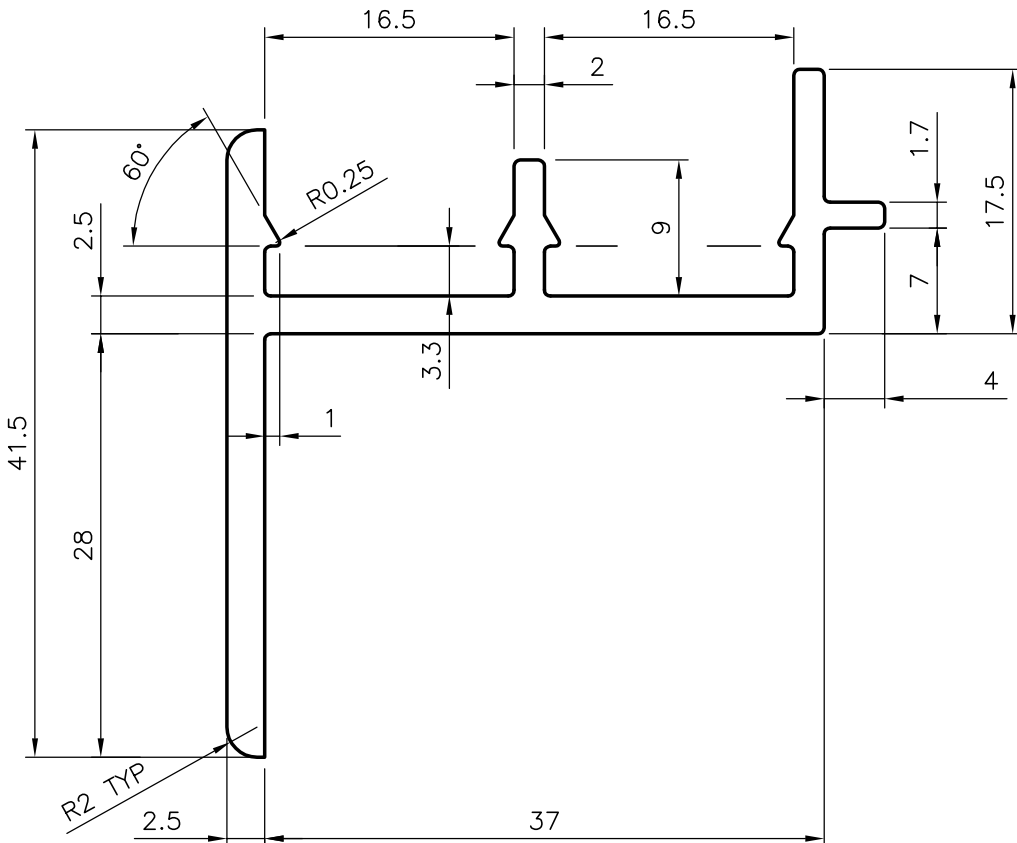
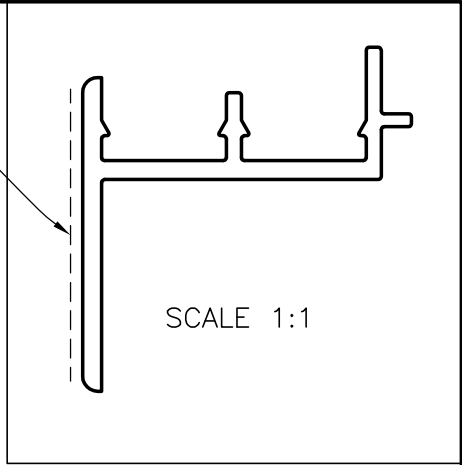


P-3410
S775
6079
24226

EXPOSED SURFACE



**JINDAL ALUMINIUM LTD.**  
 BANGALORE-560073 (INDIA)

	NAME	DATE
DRAWN	RAGHAVENDRA	27-06-01
CHECKED		
APPROVED		

1. ALL DIMENSIONS ARE IN mm.
2. ROUND OFF ALL SHARP CORNERS WITH 0.40 mm.
3. TOLERANCES WILL BE AS PER IS: 3965-1981 UNLESS OTHERWISE SPECIFIED

SCALE	1:1
WEIGHT kg/m	0.686
PERIMETER	217.82mm
SECTION No.	24226
DRAWING No.	24226

PARTY'S NAME	SUTLEJ MOTORS LIMITED ., JALANDHAR
PARTY'S DRAWING No.	AS PER DRAWING (MC4A0065)
ALLOY & TEMPER	HE9 WP
DESCRIPTION	TRANSPORT SECTION