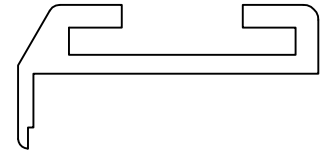
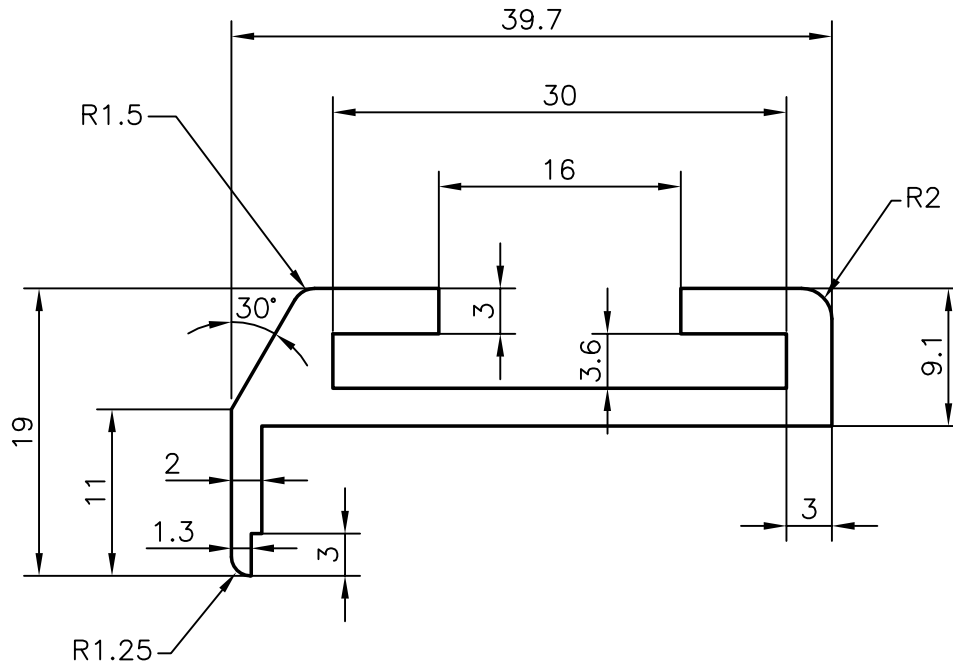


6529

24422



1:1



JINDAL ALUMINIUM LTD.
BANGALORE-560073

		NAME	DATE
		DRAWN	D.SRIVASTAVA 24.6.98
		CHECKED	
		APPROVED	
PARTY'S NAME	SUTLEJ MOTORS LIMITED , JALANDHAR	SCALE	1:1 & 2:1
PARTY'S DRAWING No.	NIL	WEIGHT kg/m	0.549
ALLOY & TEMPER	HE9 WP	SECTION No.	24422
LENGTH	3658 mm	DRAWING No.	
DESCRIPTION	MISCELLANEOUS CHANNEL	24422	

1. ALL DIMENSIONS ARE IN mm.
2. ROUND OFF ALL SHARP CORNERS WITH 0.4 mm.
3. TOLERANCES WILL BE AS PER IS: 3965-1981 ,UNLESS OTHERWISE SPECIFIED