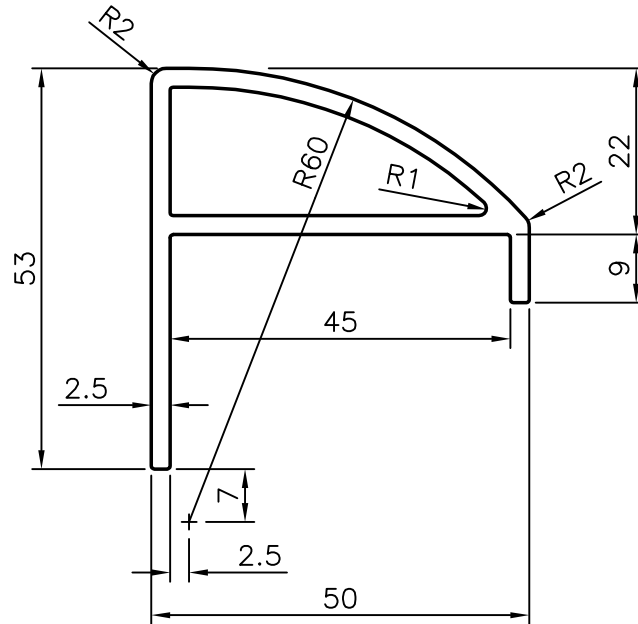


P-4624

6554

24444



GENERAL WALL THICKNESS = 2.5 mm

ALL OUTER SURFACES BETTER SURFACE FINISH REQUIRED



SYMBOL OF QUALITY  
AN ISO 9001 COMPANY

**JINDAL ALUMINIUM LTD.**  
**BANGALORE-560073 (INDIA)**

	NAME	DATE
DRAWN	MALINGAPPA	18.12.2003
CHECKED		
APPROVED		
SCALE		1:1
AREA mm <sup>2</sup>		399
PERIMETER mm.		207.6
WEIGHT kg/m		1.078
DRAWING No.	SECTION No.	
P-4624	-	
6554	6554	
24444	24444	

1. ALL DIMENSIONS ARE IN mm.
2. ROUND OFF ALL SHARP CORNERS WITH 0.40 mm.
3. TOLERANCES WILL BE AS PER IS: 6477-1983 UNLESS OTHERWISE SPECIFIED

PARTY'S NAME	GENERAL CATEGORY, COCHIN MARKET.
PARTY'S DRAWING No.	9961
ALLOY & TEMPER	HE9 WP
DESCRIPTION	TRANSPORT SECTION