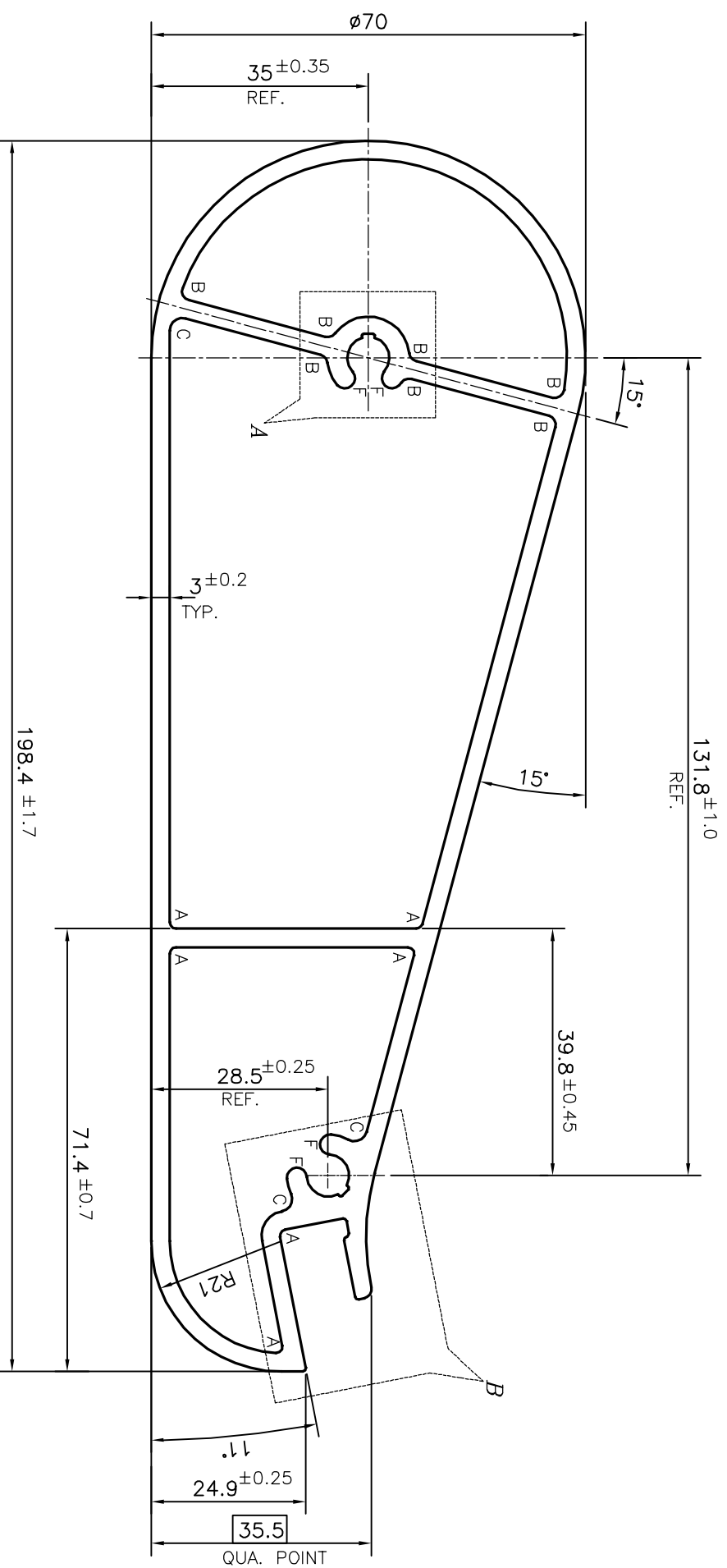
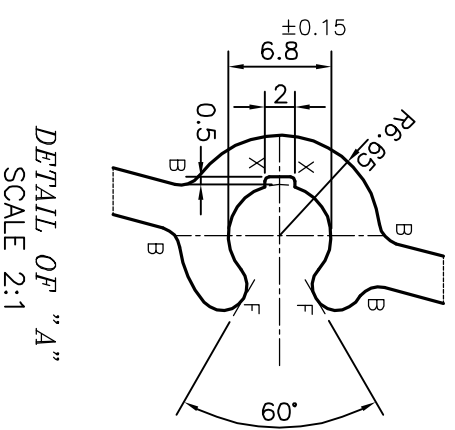


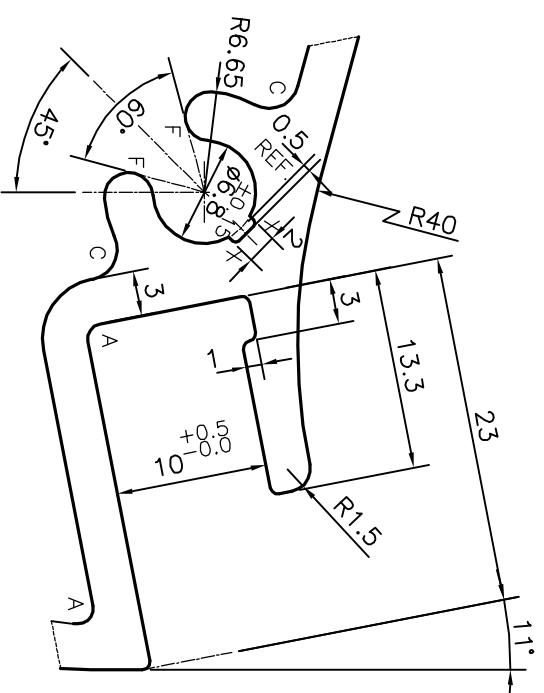
P-13297-1  
X1723  
24580



A = RADIUS 1 mm. (6 PLACES)  
B = RADIUS 1.5 mm. (7 PLACES)  
C = RADIUS 2 mm. (3 PLACES)  
X = RADIUS 0.3 mm. (4 PLACES)  
F = FULL RADIUS (4 PLACES)



DETAIL OF "A"  
SCALE 2:1



DETAIL OF "B"  
SCALE 2:1

TOLERANCES ON OVERALL WIDTHS & WIDTHS ACROSS FLATS OF BARS, & REGULAR SECTIONS

UPTO 6.40mm - ±0.20	UPTO 32.0mm - ±0.38	UPTO 120.0mm - ±0.85
UPTO 10.0mm - ±0.23	UPTO 50.0mm - ±0.46	UPTO 160.0mm - ±1.02
UPTO 12.0mm - ±0.25	UPTO 60.0mm - ±0.53	UPTO 200.0mm - ±1.14
UPTO 16.0mm - ±0.28	UPTO 80.0mm - ±0.69	UPTO 250.0mm - ±1.40
UPTO 25.0mm - ±0.30	UPTO 100.0mm - ±0.75	UPTO 300.0mm - ±1.65



**JINDAL ALUMINIUM LTD.**  
BANGALORE-560073 (INDIA)

SYMBOL OF QUALITY  
AN ISO 9001 COMPANY

1. ALL DIMENSIONS ARE IN mm.  
2. ROUND OFF ALL SHARP CORNERS WITH 0.50 mm.  
3. TOLERANCES WILL BE AS PER IS:6477-1983, UNLESS OTHERWISE SPECIFIED

PARTY'S NAME	HANSPAL TRADERS, KAPURTHALA	WEIGHT kg/m	4.938
PARTY'S DRAWING No.	AS PER DRAWING	DRAWING No.	P-13297-1
ALLOY & TEMPER	63400 WP	SECTION No.	-
DESCRIPTION	RAIL COACH SECTION		

DRAWN NAME: PARYESH DATE: 07-01-2014

CHECKED APPROVED S.S.GARG 11-01-2014

SCALE: 1:1

AREA mm<sup>2</sup>: 1829.053

PERIMETER mm: 494.296

1. STRAIGHTNESS=1.7mm/M

2. TWIST=1.7mm/M

3. ANGULARITY= ±2°

4. FLATNESS =0.007xWIDTH