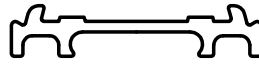
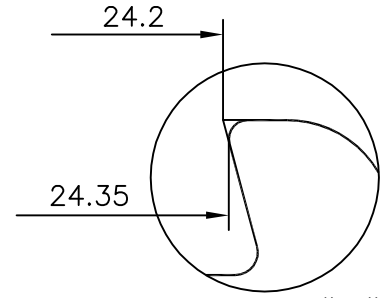


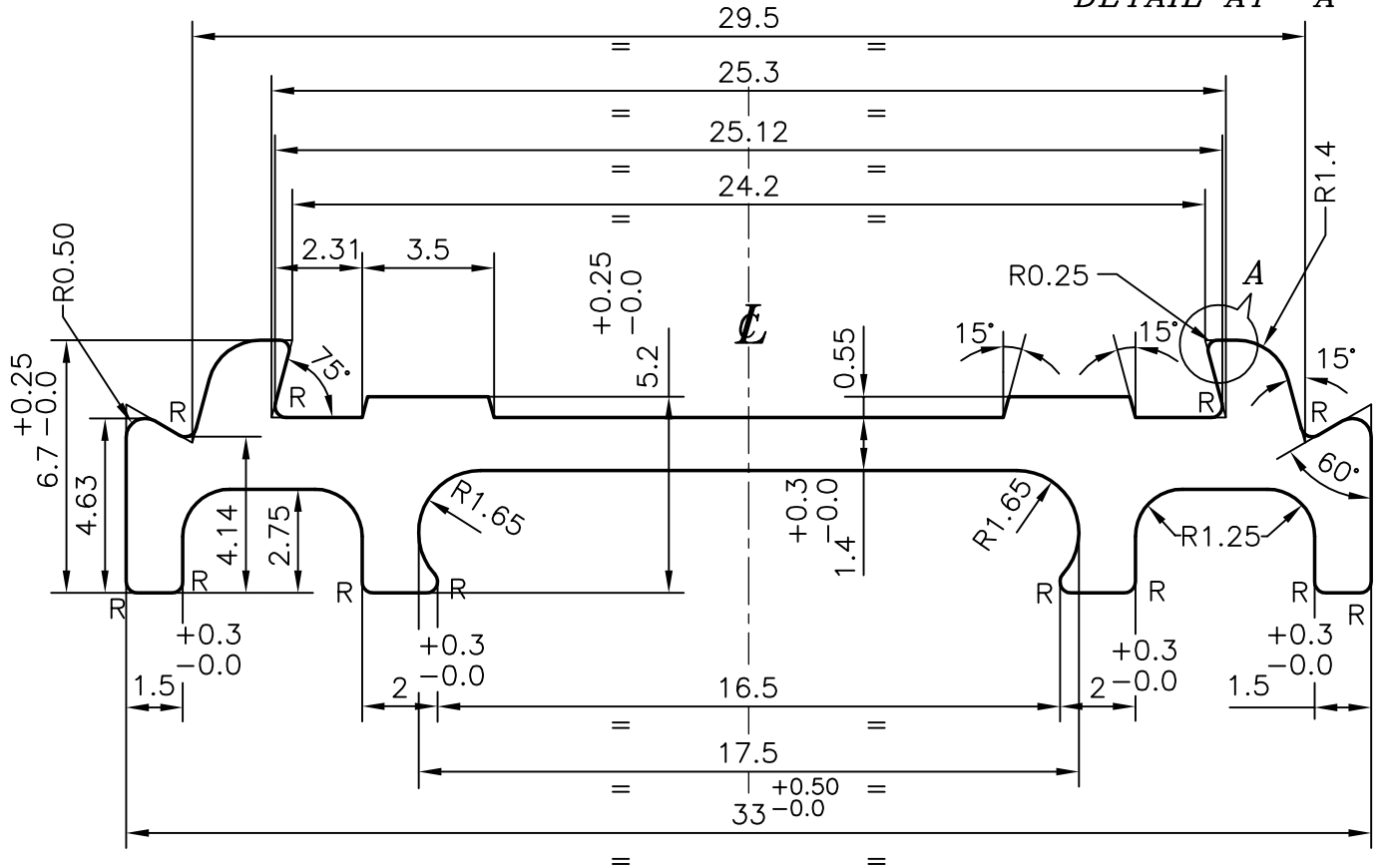
7830
24771



1:1



DETAIL AT "A"



R = 0.30 RADIUS(12)

STRAIGHTNESS:- TO BE MAINTAINED WITHIN 1.70 mm./M

TWIST:- TO BE MAINTAINED WITHIN 1.70 mm./M

JINDAL ALUMINIUM LTD.
BANGALORE-560073

	NAME	DATE
DRAWN	R.D.Sharma	29-02-96
CHECKED		
APPROVED		
PARTY'S NAME	THE INDIAN CARD CLOTHING CO. LTD.,PUNE	
PARTY'S DRAWING No.	SF-370	
ALLOY & TEMPER	HE9 WP	
LENGTH	1015 mm. $+6.0$ -0.0 mm.	
DESCRIPTION	STATIONARY FLAT-CARRIER (C/S)	
SCALE	1:1 & 5:1	
WEIGHT kg/m	0.226	
SECTION No.	24771	
DRAWING No.	24771	

1. ALL DIMENSIONS ARE IN mm.
2. ROUND OFF ALL SHARP CORNERS WITH 0.4 mm.
3. TOLERANCES WILL BE AS PER IS: 3965-1981 ,UNLESS OTHERWISE SPECIFIED