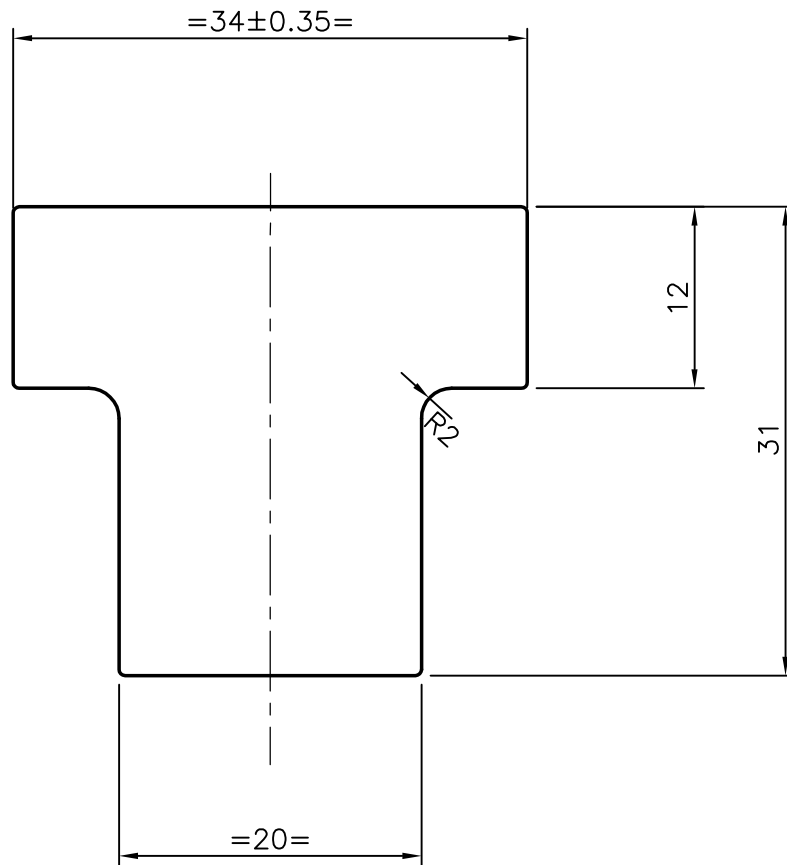
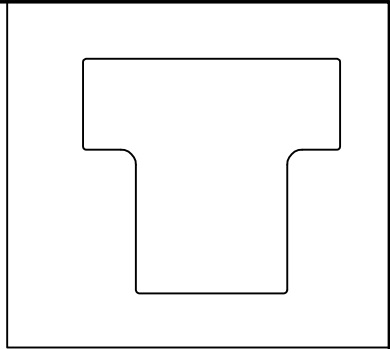



P-5905

S1612

24781



1. TWIST & BEND ALONG LENGTH = 1.7mm / METER

 SYMBOL OF QUALITY AN ISO 9001 COMPANY	JINDAL ALUMINIUM LTD. BANGALORE-560073 (INDIA)	NAME		DATE
		DRAWN	J.P.KAUSHIK	10-10-2005
1. ALL DIMENSIONS ARE IN mm. 2. ROUND OFF ALL SHARP CORNERS WITH 0.40 mm. 3. TOLERANCES WILL BE AS PER IS: 3965-1981 UNLESS OTHERWISE SPECIFIED		CHECKED		
		APPROVED		
PARTY'S NAME LAKZER CARD TOPS.,COIMBATORE		SCALE		2:1
		AREA mm ²		789.511
PARTY'S DRAWING No. LAK-ALU-BAR-100		PERIMETER mm.		127.253
		WEIGHT kg/m		2.132
ALLOY & TEMPER 63400 T6		DRAWING No.	SECTION No.	
		P-5905	-	
DESCRIPTION T-BAR		S1612	S1612	
		24781	24781	