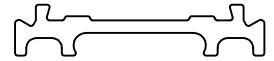


P-7067-5

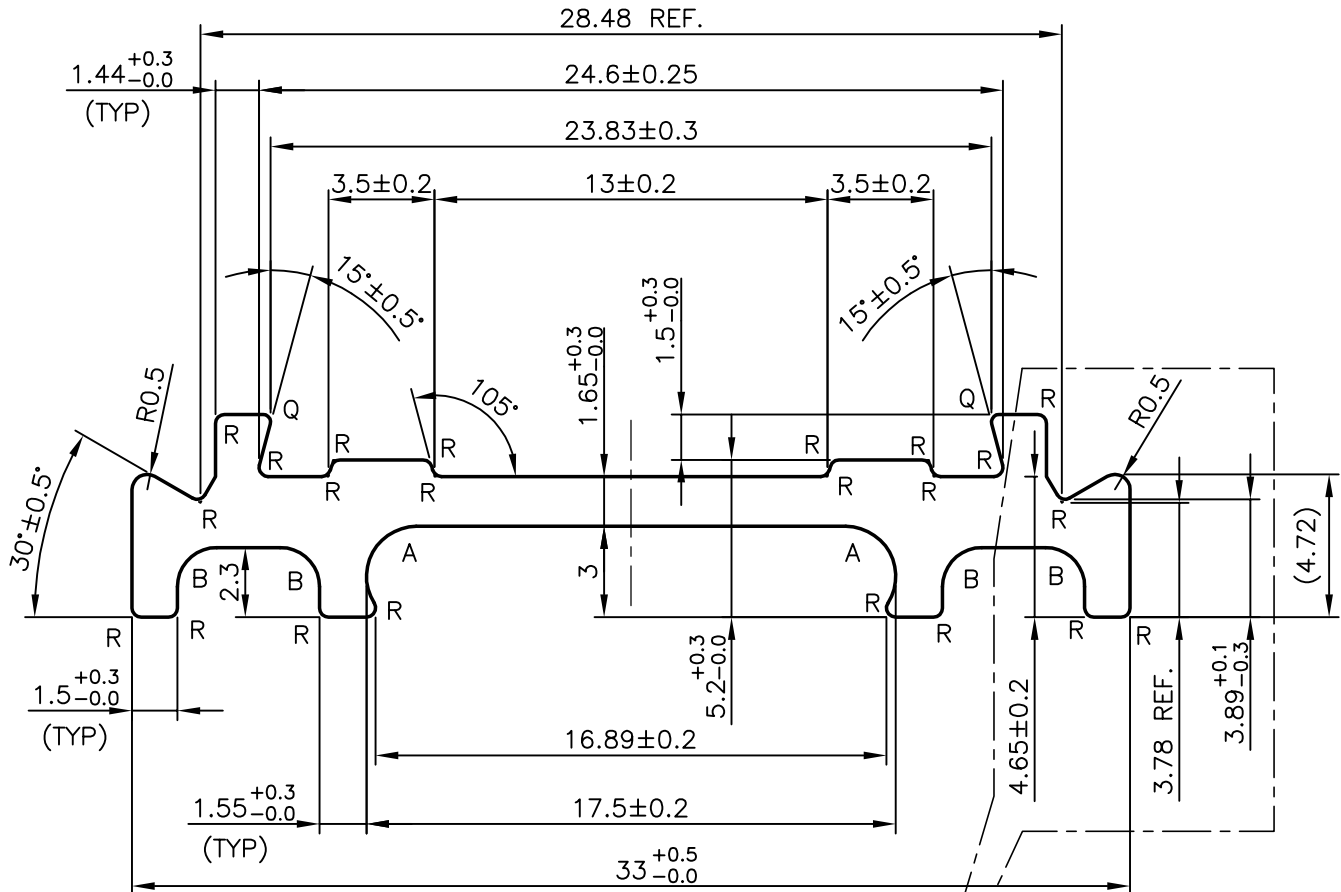
24810



SCALE 1:1

NOTE:-

1. R = R0.3 mm (22 PLACES)
2. A = R1.65 mm (2 PLACES)
3. B = R1.30 mm (4 PLACES)
4. Q = R0.25 mm (2 PLACES)
5. STRAIGHTNESS TO BE MAINTAINED WITHIN 1.00 mm/M
6. TWIST TO BE MAINTAINED WITHIN 1.00 mm/M
7. PARALLELISM TO BE MAINTAINED ± 0.25 mm
8. LENGTH = $1025^{+6.0}_{-0.0}$



ISSUE- ②

PLEASE NOTE:-

1. WHILE MAINTAINING TOLERANCES ON DIMENSIONS MINUS SIDE, ANGLE WILL NOT BE MAINTAIN HENCE IT IS REMOVED FROM THE DRAWING,
2. REFERENCE DIMENSIONS ALSO REMOVED, IT CREATES UNNECESSARY CONFUSION.



SYMBOL OF QUALITY
AN ISO 9001 COMPANY

JINDAL ALUMINIUM LTD.
BANGALORE-560073 (INDIA)

	NAME	DATE
DRAWN	PRASANN.H	06-08-2007
CHECKED		
APPROVED		

1. ALL DIMENSIONS ARE IN mm.
2. ROUND OFF ALL SHARP CORNERS WITH 0.40 mm.
3. TOLERANCES WILL BE AS PER IS:3965-1981 UNLESS OTHERWISE SPECIFIED

SCALE	4:1
AREA mm ²	90.832
PERIMETER mm.	96.973
WEIGHT kg/m	0.245

PARTY'S NAME	THE INDIAN CARD CLOTHING COMPANY LTD., PUNE
PARTY'S DRAWING No.	SF-2161
ALLOY & TEMPER	HE9 WP
DESCRIPTION	TEXTILE SECTION

DRAWING No.	SECTION No.
P-7067-5	-
24810	24810