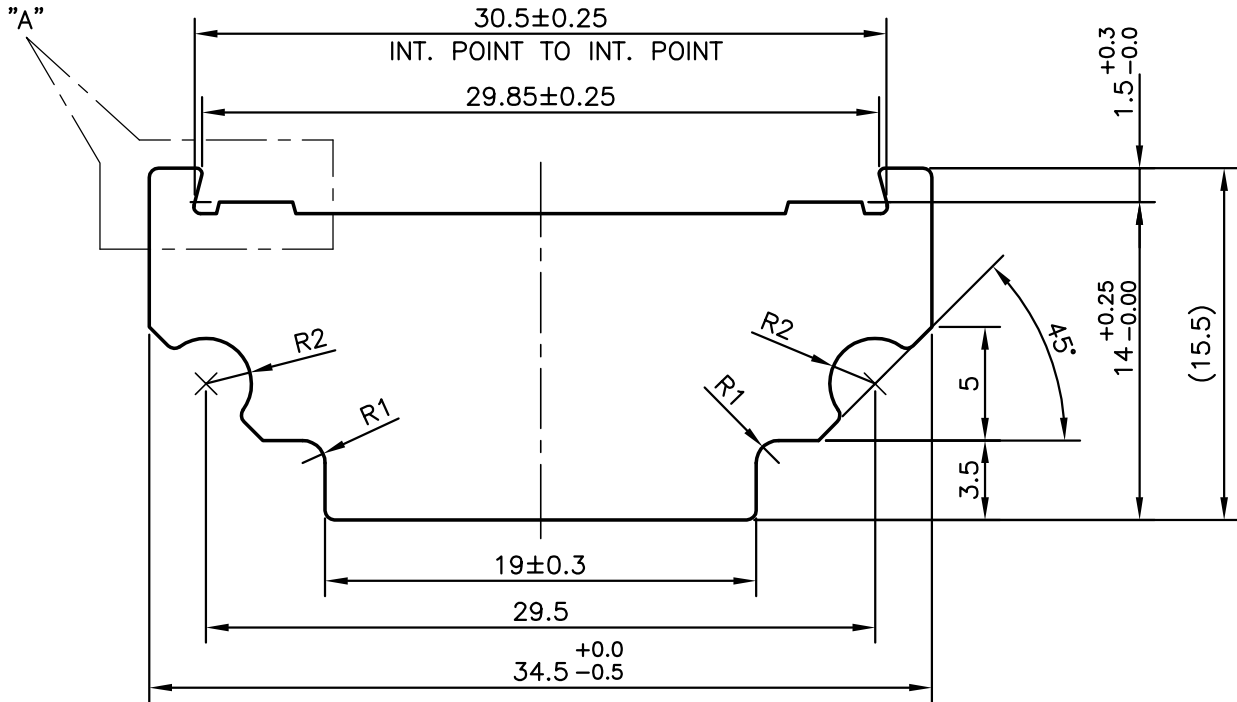
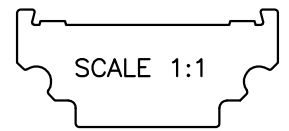
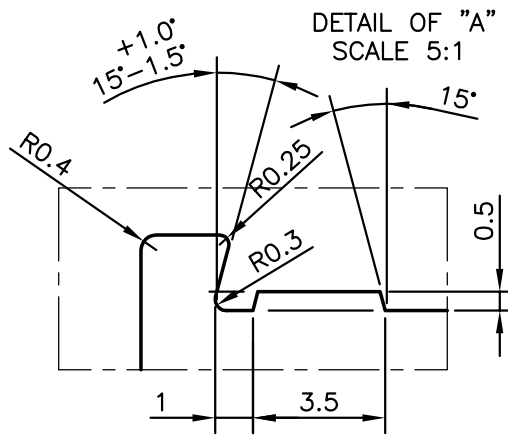


P-9488

S2278

24816

**NOTE: -**

1. TOLERANCE ON TWIST & BEND = 1.00 mm/M
2. UNSPECIFIED TOLERANCE FOR ALL ANGLES = $\pm 2^\circ$
3. UNSPECIFIED RADII = 0.40 mm
4. LENGTH = $1025^{+0.5}_{-0.0}$



SYMBOL OF QUALITY
AN ISO 9001 COMPANY

JINDAL ALUMINIUM LTD.
BANGALORE-560073 (INDIA)

	NAME	DATE
DRAWN	RAGHAVENDRA	15-09-2009
CHECKED		
APPROVED		
SCALE		3:1
AREA mm ²		386.044
PERIMETER mm.		102.5
WEIGHT kg/m		1.042
DRAWING No.	SECTION No.	
P-9488	-	
S2278	S2278	
24816	24816	

1. ALL DIMENSIONS ARE IN mm.
2. ROUND OFF ALL SHARP CORNERS WITH 0.40 mm.
3. TOLERANCES WILL BE AS PER IS:3965-1981 UNLESS OTHERWISE SPECIFIED

PARTY'S NAME	THE INDIAN CARD CLOTHING CO. LTD., PUNE
PARTY'S DRAWING No.	SF-2177/E & AS PER REQUIREMENT
ALLOY & TEMPER	HE9 WP
DESCRIPTION	TEXTILE SECTION