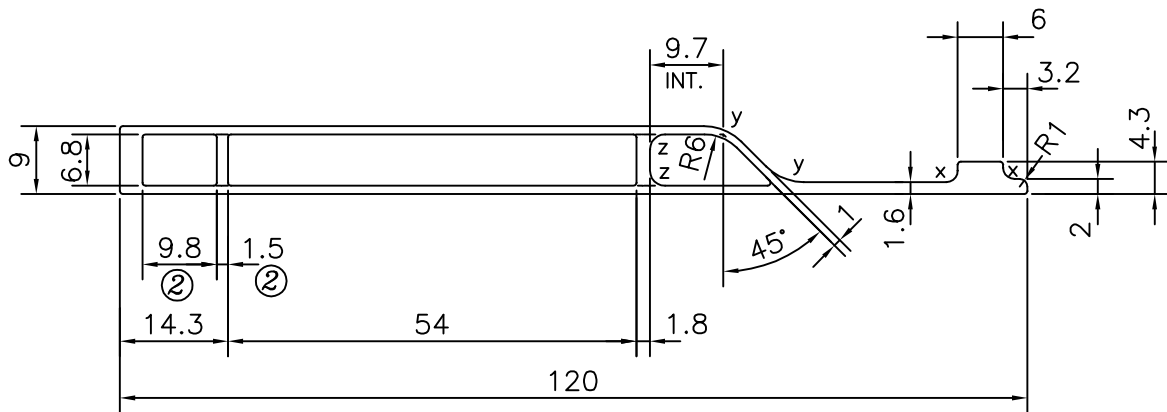


P-12904

24831



ISSUE (2) :-

➔ DIMENSION CHANGED FROM :-

10.4 TO 9.8

1.3 TO 1.5

➔ WEIGHT ALSO CHANGED FROM

0.827 Kg/M TO 0.838 Kg/M.

x = RADIUS 1.5 mm. (2 PLACES)

z = RADIUS 2 mm. (2 PLACES)

y = RADIUS 7 mm. (2 PLACES)

TOLERANCES ON OVERALL WIDTHS & WIDTHS ACROSS FLATS OF BARS, & REGULAR SECTIONS

UPTO 6.40mm - ±0.20	UPTO 32.0mm - ±0.38	UPTO 120.0mm - ±0.85	UPTO 320.00mm - ±1.70
UPTO 10.0mm - ±0.23	UPTO 50.0mm - ±0.46	UPTO 160.0mm - ±1.02	
UPTO 12.0mm - ±0.25	UPTO 60.0mm - ±0.53	UPTO 200.0mm - ±1.14	
UPTO 16.0mm - ±0.28	UPTO 80.0mm - ±0.69	UPTO 250.0mm - ±1.40	
UPTO 25.0mm - ±0.30	UPTO 100.0mm - ±0.75	UPTO 300.0mm - ±1.65	



SYMBOL OF QUALITY
AN ISO 9001 COMPANY

JINDAL ALUMINIUM LTD.
BANGALORE-560073 (INDIA)

	NAME	DATE
DRAWN	PARVESH	16-01-2014
CHECKED		
APPROVED	S.S.GARG	17-01-2014

1. ALL DIMENSIONS ARE IN mm.
2. ROUND OFF ALL SHARP CORNERS WITH 0.40 mm.
3. TOLERANCES WILL BE AS PER IS:6477-1983 , UNLESS OTHERWISE SPECIFIED

SCALE	1:1
AREA mm ²	310.328
PERIMETER mm.	255.888
WEIGHT kg/m	0.838

PARTY'S NAME	GENERAL CATEGORY, MUMBAI MARKET	DRAWING No.	P-12904	SECTION No.	-
PARTY'S DRAWING No.	AS PER AutoCAD DRAWING		24831		24831 (ISSUE-2)
ALLOY & TEMPER	HE9 WP				
DESCRIPTION	TEXTILE SECTION				