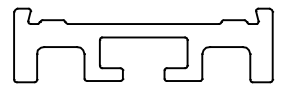


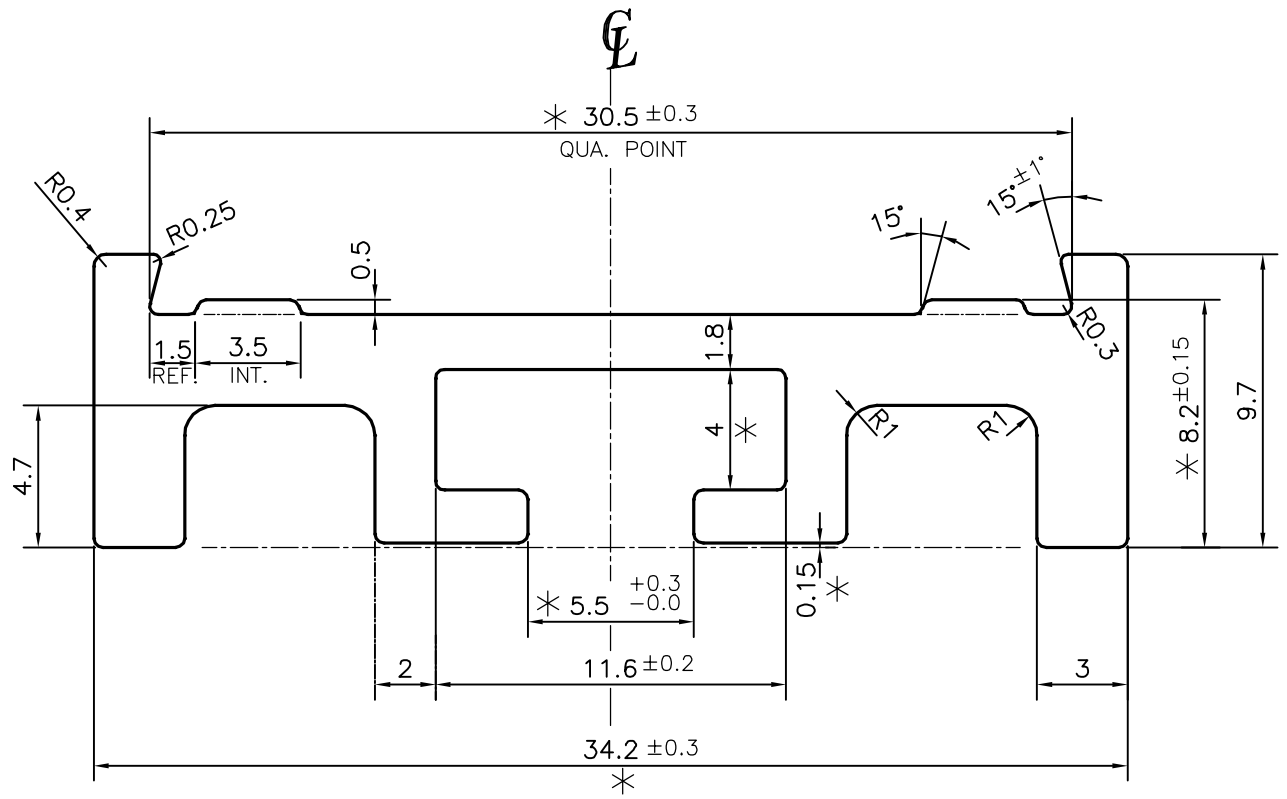
P-13304

S3983

24854



SCALE:- 1:1



1. STRAIGHTNESS=1.7mm/M
2. TWIST=1.7mm/M
3. ANGULARITY= ±2°
4. FLATNESS =0.007xWIDTH

TOLERANCE CHART CD = CIRCUMSCRIBING CIRCLE

DIMENSION	CD ≤ 100	100 < CD < 200	200 < CD < 300	300 < CD < 500
UPTO 10mm	±0.25	±0.30	±0.35	±0.40
10.0 - 25.0	±0.30	±0.40	±0.50	±0.60
25.0 - 50.0	±0.50	±0.60	±0.80	±0.90
50.0 - 100	±0.70	±0.90	±1.10	±1.30
100 - 150	-	±1.10	±1.30	±1.50
150 - 200	-	±1.3	±1.50	±1.80
200 - 300	-	-	±1.70	±2.10
300 - 450	-	-	-	±2.80

* = MARKED DIMENSIONS IS CRITICAL



SYMBOL OF QUALITY
AN ISO 9001 COMPANY

JINDAL ALUMINIUM LTD.
BANGALORE-560073 (INDIA)

	NAME	DATE
DRAWN	PARVESH	27-12-2013
CHECKED		
APPROVED	S.S.GARG	09-01-2014

1. ALL DIMENSIONS ARE IN mm.
2. ROUND OFF ALL SHARP CORNERS WITH 0.30 mm.
3. TOLERANCES WILL BE AS PER BS:EN-755-9, UNLESS OTHERWISE SPECIFIED

SCALE	4:1
AREA mm ²	157.924
PERIMETER mm.	131.492
WEIGHT kg/m	0.426

PARTY'S NAME	SANMIT CARD CLOTHING INDIA PVT. LTD., COIMBATORE	DRAWING No.	SECTION No.
PARTY'S DRAWING No.	SANMIT-TYPE-B-517	P-13304	-
ALLOY & TEMPER	63400 WP	S3983	S3983
		24854	24854
DESCRIPTION	TEXTILE SECTION		