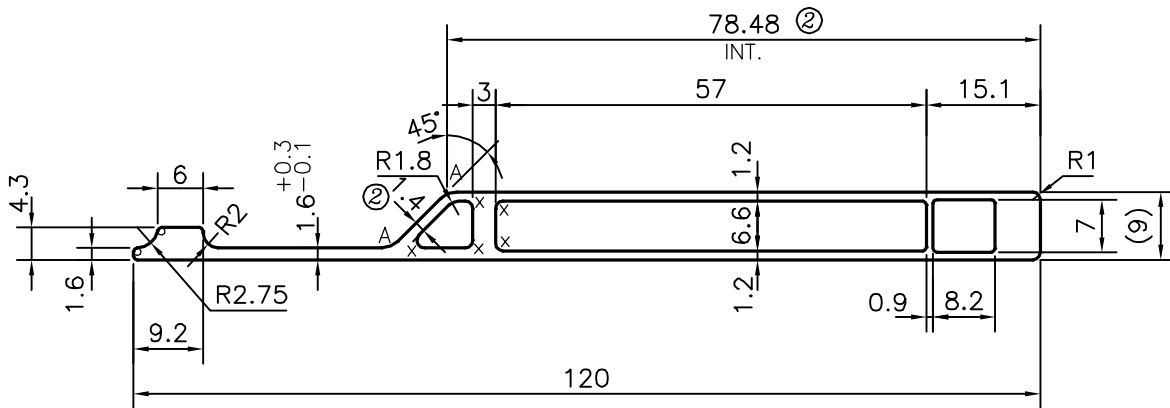


P-13395

S4017

24878



☞ TOLERANCE ADDED ON THICKNESS  $1.6^{+0.3}_{-0.1}$   
AS PER E-MAIL DATED 22-04-2014.

**ISSUE (2) :-**

- ☞ X = RADIUS 1 mm. (5 PLACES)
- ☞ THICKNESS CHANGED FROM 1.2 TO 1.4 mm.
- ☞ DIMENSION CHANGED FROM 78.2 TO 78.48 mm.
- ☞ WEIGHT ALSO CHANGED FROM 0.937 TO 0.949 kg/m.

A = RADIUS 3 mm. (2 PLACES)

**TOLERANCES ON OVERALL WIDTHS & WIDTHS ACROSS FLATS OF BARS, & REGULAR SECTIONS**

|                     |                      |                      |   |
|---------------------|----------------------|----------------------|---|
| UPTO 6.40mm - ±0.20 | UPTO 32.0mm - ±0.38  | UPTO 120.0mm - ±0.85 | 1. STRAIGHTNESS=1.7mm/M<br>2. TWIST=1.7mm/M<br>3. ANGULARITY= ±2°<br>4. FLATNESS =0.007xWIDTH |
| UPTO 10.0mm - ±0.23 | UPTO 50.0mm - ±0.46  | UPTO 160.0mm - ±1.02 |   |
| UPTO 12.0mm - ±0.25 | UPTO 60.0mm - ±0.53  | UPTO 200.0mm - ±1.14 |   |
| UPTO 16.0mm - ±0.28 | UPTO 80.0mm - ±0.69  | UPTO 250.0mm - ±1.40 |   |
| UPTO 25.0mm - ±0.30 | UPTO 100.0mm - ±0.75 | UPTO 300.0mm - ±1.65 |   |



SYMBOL OF QUALITY  
AN ISO 9001 COMPANY

**JINDAL ALUMINIUM LTD.**  
BANGALORE-560073 (INDIA)

|          | NAME     | DATE       |
|----------|----------|------------|
| DRAWN    | PARVESH  | 09-03-2016 |
| CHECKED  |          |            |
| APPROVED | S.S.GARG | 17-03-2016 |

- ALL DIMENSIONS ARE IN mm.
- ROUND OFF ALL SHARP CORNERS WITH 0.50 mm.
- TOLERANCES WILL BE AS PER IS:6477-1983, UNLESS OTHERWISE SPECIFIED

|                      |         |
|----------------------|---------|
| SCALE                | 1:1     |
| AREA mm <sup>2</sup> | 351.605 |
| PERIMETER mm.        | 255.096 |
| WEIGHT kg/m          | 0.949   |

|                     |                                    |             |         |             |               |
|---------------------|------------------------------------|-------------|---------|-------------|---------------|
| PARTY'S NAME        | BHARAT HEALD FRAME WORKS, BHIWANDI | DRAWING No. | P-13395 | SECTION No. | -             |
| PARTY'S DRAWING No. | AS PER DRAWING                     |             | S4017   |             | S4017-ISSUE-2 |
| ALLOY & TEMPER      | 6063 T6                            |             | 24878   |             | 24878         |
| DESCRIPTION         | TEXTILE SECTION                    |             |         |             |               |