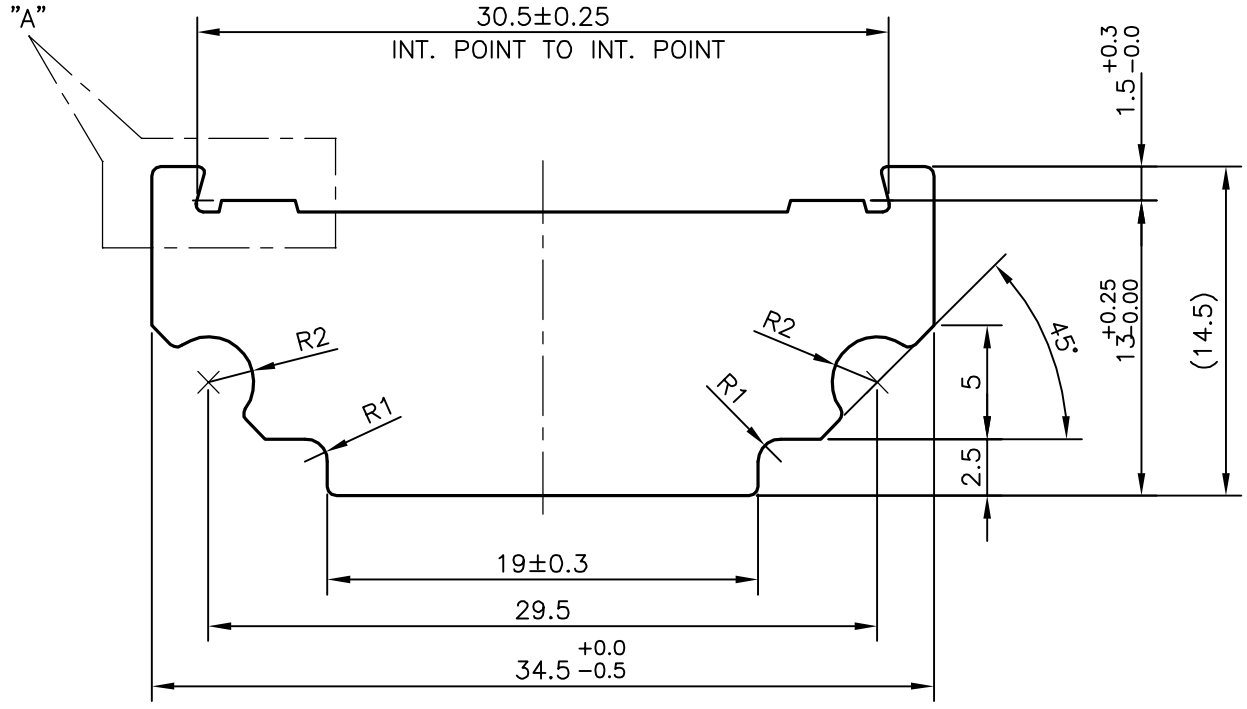
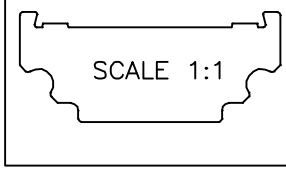
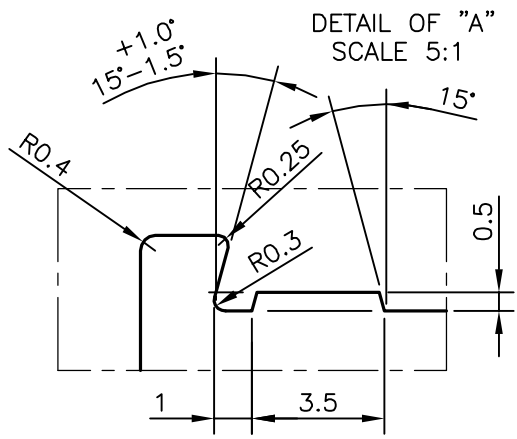



P-10521-1  
X1446  
24883



**NOTE: -**

1. TOLERANCE ON TWIST & BEND = 1.00 mm/M
2. UNSPECIFIED TOLERANCE FOR ALL ANGLES =  $\pm 2^\circ$
3. UNSPECIFIED RADII = 0.40 mm
4. LENGTH =  $1025^{+6}_{-0}$

 SYMBOL OF QUALITY AN ISO 9001 COMPANY	<b>JINDAL ALUMINIUM LTD.</b> BANGALORE-560073 (INDIA)	NAME	DATE
		DRAWN	J.P.KAUSHIK
		CHECKED	
		APPROVED	S.S.GARG
		SCALE	3:1
		AREA mm <sup>2</sup>	367.044
		PERIMETER mm.	100.5
		WEIGHT kg/m	0.991
PARTY'S NAME	THE INDIAN CARD CLOTHING CO. LTD., SOLAN	DRAWING No.	SECTION No.
PARTY'S DRAWING No.	SF-2433/E	P-10521-1	-
ALLOY & TEMPER	HE9 WP	X1446	X1446
DESCRIPTION	TEXTILE SECTION	24883	24883