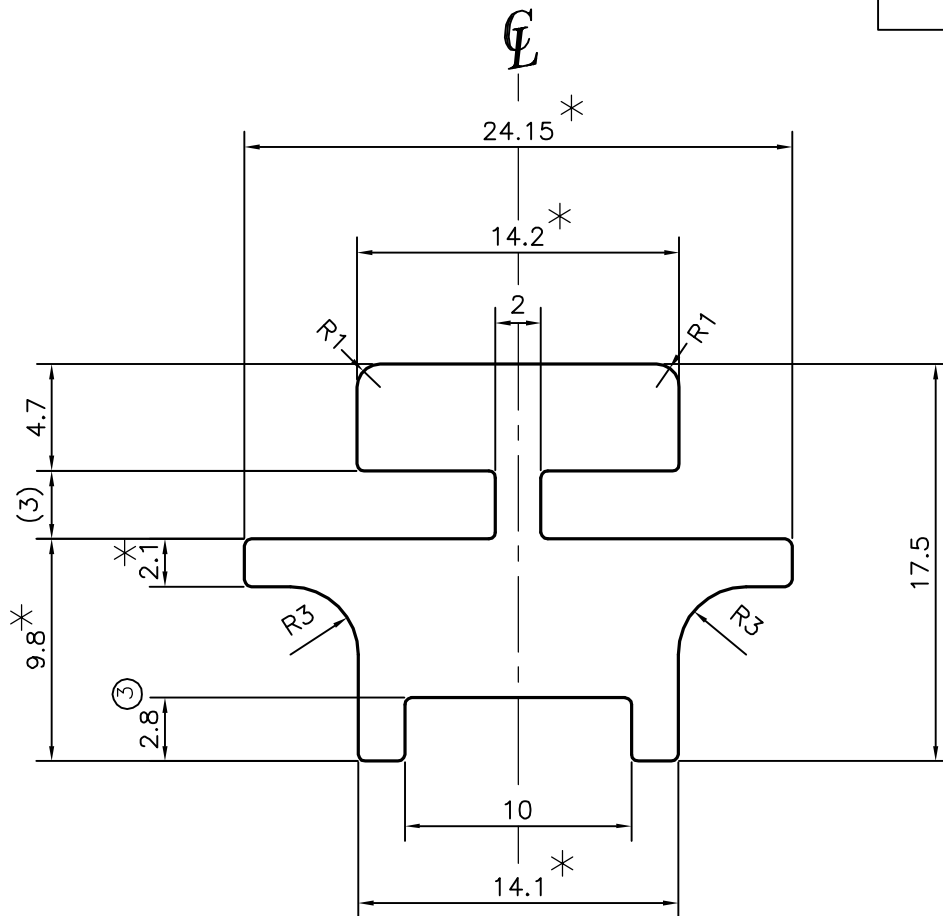
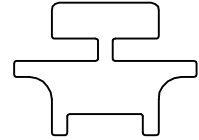


P-13642

S4145

24884

**ISSUE-2**

DIMENSIONS CHANGED FROM 3.1 TO 2.9

WEIGHT ALSO CHANGED FROM 0.552 Kg/M TO 0.557 Kg/M
ON DATED 11/07/2014**ISSUE-3**

DIMENSIONS CHANGED FROM 2.9 TO 2.8

WEIGHT ALSO CHANGED FROM 0.557 Kg/M TO 0.560 Kg/M

1. STRAIGHTNESS=1.0mm/M
2. TWIST=1.0mm/M
3. ANGULARITY= $\pm 2^\circ$
4. FLATNESS = 0.007xWIDTH

* = MARKED DIMENSION IS CRITICAL

SYMBOL OF QUALITY
AN ISO 9001 COMPANY**JINDAL ALUMINIUM LTD.**
BANGALORE-560073 (INDIA)

	NAME	DATE
DRAWN	J.P.KAUSHIK	12-07-2014
CHECKED		
APPROVED	S.S.GARG	16-07-2014
SCALE		3:1
AREA mm ²		207.381
PERIMETER mm.		107.806
WEIGHT kg/m		0.560
DRAWING No.		SECTION No.
P-13642		-
S4145		S4145(ISSUE-3)
24884		24884

1. ALL DIMENSIONS ARE IN mm.
2. ROUND OFF ALL SHARP CORNERS WITH 0.30 mm.
3. TOLERANCES WILL BE AS PER BS:EN-755-9 , UNLESS OTHERWISE SPECIFIED

PARTY'S NAME	SANMIT CARD CLOTHING INDIA PVT. LTD., COIMBATORE
PARTY'S DRAWING No.	SANMIT-TYPE-A-H-556
ALLOY & TEMPER	63400 WP
DESCRIPTION	TEXTILE SECTION