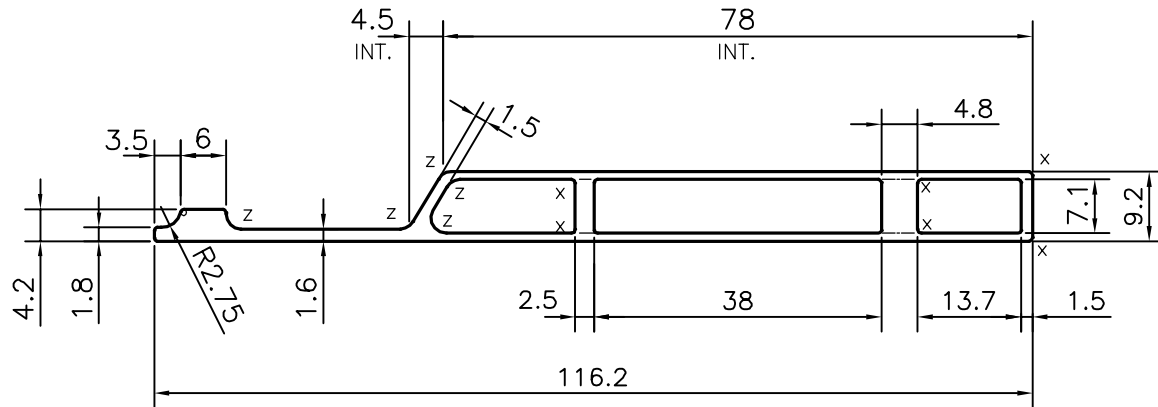


P-14459-1

S4400

24895



X = RADIUS 0.5 mm. (6 PLACES)
Z = RADIUS 2.0 mm. (5 PLACES)

TOLERANCES ON OVERALL WIDTHS & WIDTHS ACROSS FLATS OF BARS, & REGULAR SECTIONS

| | | | |
|--------------------------|---------------------------|---------------------------|---------------------------------------------------------------------------------------------------------|
| UPTO 6.40mm - ± 0.20 | UPTO 32.0mm - ± 0.38 | UPTO 120.0mm - ± 0.85 | 1. STRAIGHTNESS=1.7mm/M 2. TWIST=1.7mm/M 3. ANGULARITY= $\pm 2^\circ$ 4. FLATNESS =0.007xWIDTH |
| UPTO 10.0mm - ± 0.23 | UPTO 50.0mm - ± 0.46 | UPTO 160.0mm - ± 1.02 | |
| UPTO 12.0mm - ± 0.25 | UPTO 60.0mm - ± 0.53 | UPTO 200.0mm - ± 1.14 | |
| UPTO 16.0mm - ± 0.28 | UPTO 80.0mm - ± 0.69 | UPTO 250.0mm - ± 1.40 | |
| UPTO 25.0mm - ± 0.30 | UPTO 100.0mm - ± 0.75 | UPTO 300.0mm - ± 1.65 | |



SYMBOL OF QUALITY
AN ISO 9001 COMPANY

JINDAL ALUMINIUM LTD.
BANGALORE-560073 (INDIA)

| | NAME | DATE |
|----------|----------|------------|
| DRAWN | PARVESH | 24-02-2015 |
| CHECKED | | |
| APPROVED | S.S.GARG | 27-02-2015 |

1. ALL DIMENSIONS ARE IN mm.
2. ROUND OFF ALL SHARP CORNERS WITH 0.40 mm.
3. TOLERANCES WILL BE AS PER IS:6477-1983 , UNLESS OTHERWISE SPECIFIED

| | |
|----------------------|---------|
| SCALE | 1:1 |
| AREA mm ² | 319.303 |
| PERIMETER mm. | 249.245 |
| WEIGHT kg/m | 0.862 |

| | | | | | |
|---------------------|------------------------------------|-------------|-----------|-------------|-------|
| PARTY'S NAME | BHARAT HEALD FRAME WORKS, BHIWANDI | DRAWING No. | P-14459-1 | SECTION No. | - |
| PARTY'S DRAWING No. | AS PER SKETCH & REQUIREMENT | | S4400 | | S4400 |
| ALLOY & TEMPER | 6063 T6 | | 24895 | | 24895 |
| DESCRIPTION | TEXTILE SECTION | | | | |