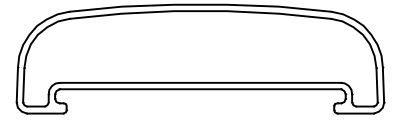


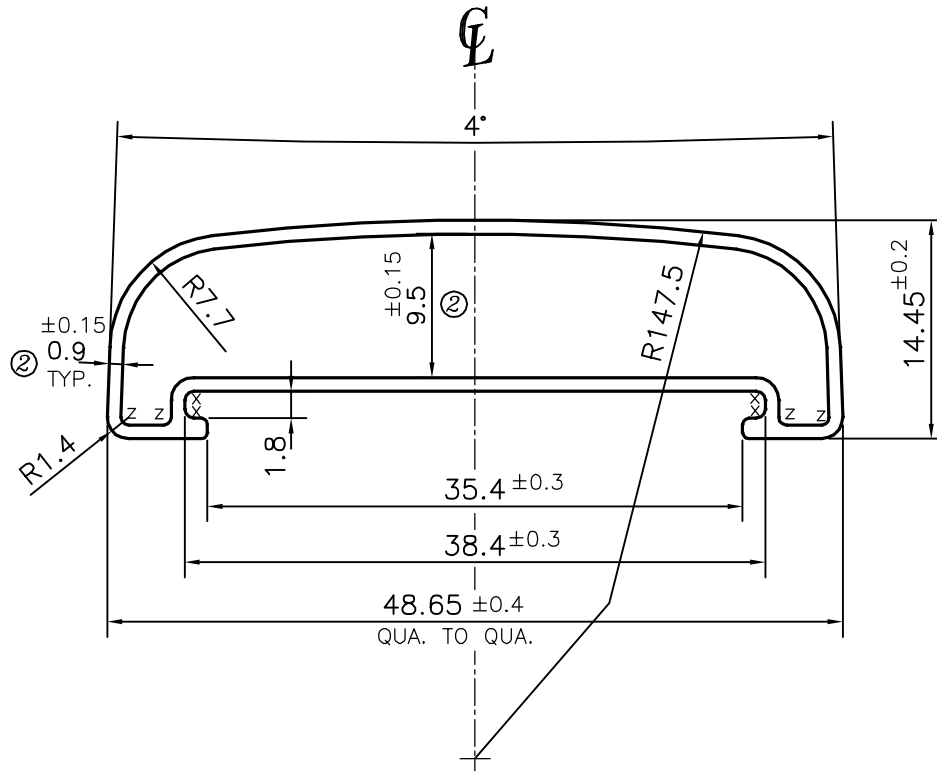
P-13019

S3878

24910



SCALE:- 1:1



ISSUE (2) :-

- ☞ THICKNESS CHANGED FROM 0.8 TO 0.9 mm.
- ☞ DIMENSION CHANGED FROM 9.7 TO 9.5 mm.
- ☞ WEIGHT ALSO CHANGED FROM 0.269 TO 0.300 Kg/M.

X = RADIUS 0.6 mm. (4 PLACES)

Z = RADIUS 0.5 mm. (4 PLACES) ②

TOLERANCES ON OVERALL WIDTHS & WIDTHS ACROSS FLATS OF BARS, & REGULAR SECTIONS

UPTO 6.40mm - ±0.20	UPTO 32.0mm - ±0.38	UPTO 120.0mm - ±0.85	1. STRAIGHTNESS=1.7mm/M 2. TWIST=1.7mm/M 3. ANGULARITY= ±2' 4. FLATNESS =0.007xWIDTH
UPTO 10.0mm - ±0.23	UPTO 50.0mm - ±0.46	UPTO 160.0mm - ±1.02	
UPTO 12.0mm - ±0.25	UPTO 60.0mm - ±0.53	UPTO 200.0mm - ±1.14	
UPTO 16.0mm - ±0.28	UPTO 80.0mm - ±0.69	UPTO 250.0mm - ±1.40	
UPTO 25.0mm - ±0.30	UPTO 100.0mm - ±0.75	UPTO 300.0mm - ±1.65	

SYMBOL OF QUALITY
AN ISO 9001 COMPANY

JINDAL ALUMINIUM LTD.
BANGALORE-560073 (INDIA)

	NAME	DATE
DRAWN	PARVESH	10-12-2013
CHECKED		
APPROVED	S.S.GARG	04-01-2014

- ALL DIMENSIONS ARE IN mm.
- ROUND OFF ALL SHARP CORNERS WITH 0.40 mm.
- TOLERANCES WILL BE AS PER IS:6477-1983, UNLESS OTHERWISE SPECIFIED

SCALE	2:1
AREA mm ²	111.078
PERIMETER mm.	126.794
WEIGHT kg/m	0.300

PARTY'S NAME	MONIFA ENGG. PVT. LTD., NASHIK
PARTY'S DRAWING No.	AS PER AUTOCAD DRAWING-ARIES INNER
ALLOY & TEMPER	6063 T5
DESCRIPTION	SUITCASE SECTION

DRAWING No.	SECTION No.
P-13019	-
S3878	S3878(ISSUE-2)
24910	24910