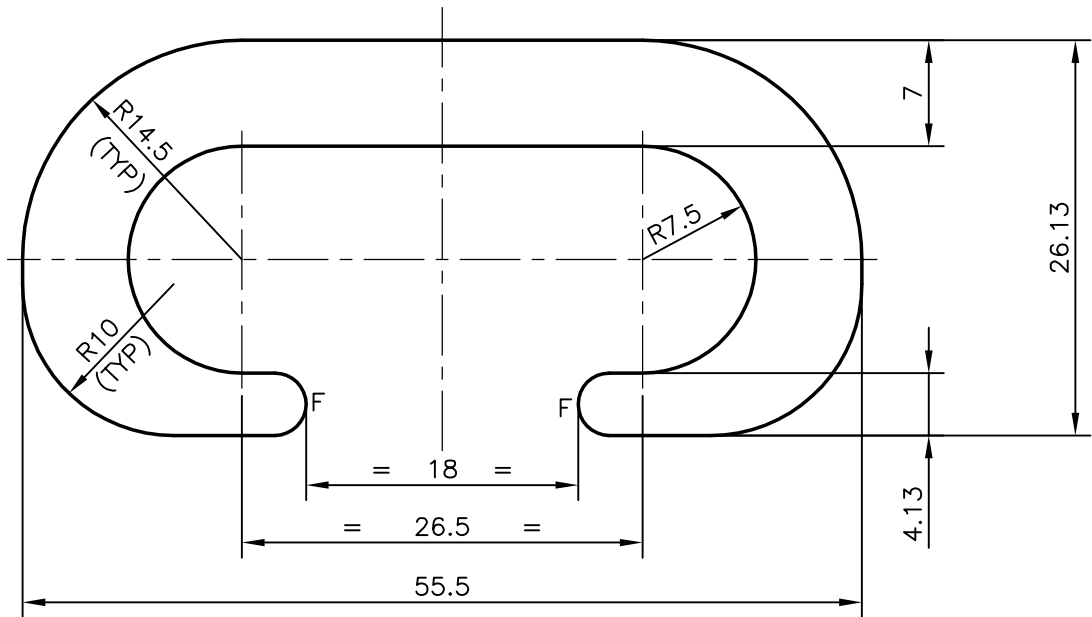
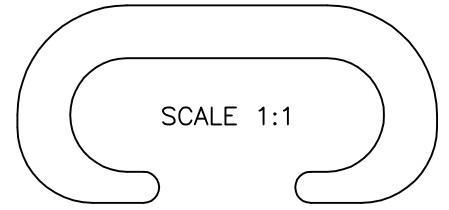


P-9094

S2084

25170



NOTE:-

1. F = FULL RADIUS (2 PLACES)



SYMBOL OF QUALITY
AN ISO 9001 COMPANY

JINDAL ALUMINIUM LTD.
BANGALORE-560073 (INDIA)

	NAME	DATE
DRAWN	J.P.KAUSHIK	28-02-2009
CHECKED		
APPROVED		

1. ALL DIMENSIONS ARE IN mm.
2. ROUND OFF ALL SHARP CORNERS WITH 0.40 mm.
3. TOLERANCES WILL BE AS PER IS:3965-1981 UNLESS OTHERWISE SPECIFIED

SCALE	2:1
AREA mm ²	664.84
PERIMETER mm.	211.068
WEIGHT kg/m	1.795

PARTY'S NAME	SUNLIGHT ELECTRICALS, BANGALORE
PARTY'S DRAWING No.	AS PER OUR SECTION S2082 (MODIFIED)
ALLOY & TEMPER	6061 T6
DESCRIPTION	ELECTRICAL SECTION-CONNECTOR

DRAWING No.	SECTION No.
P-9094	-
S2084	S2084
25170	25170