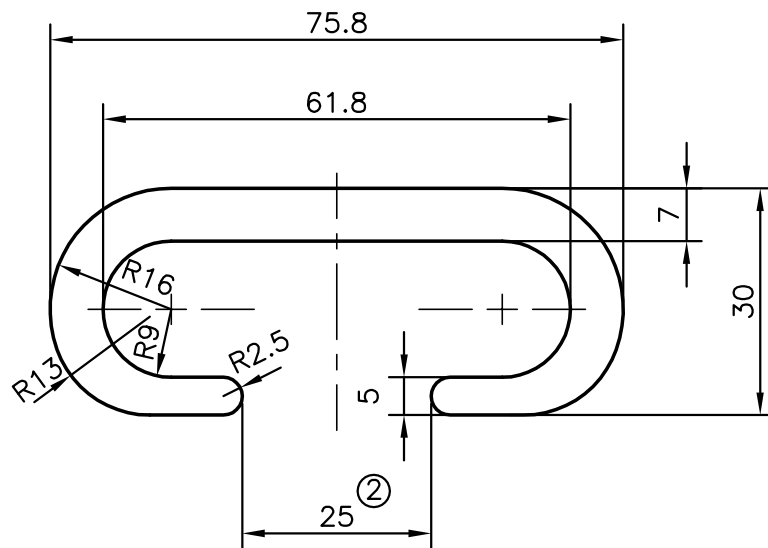



P-9417

S2205

25177



ISSUE-2 DIMENSIONS CHANGED FROM 27.8 mm TO 25 mm  
WEIGHT ALSO CHANGED FROM 2.431 kg/M TO 2.469 kg/M

 SYMBOL OF QUALITY AN ISO 9001 COMPANY	<b>JINDAL ALUMINIUM LTD.</b> <b>BANGALORE-560073 (INDIA)</b>	DRAWN	J.P.KAUSHIK	16-08-2010	
		CHECKED			
1. ALL DIMENSIONS ARE IN mm. 2. ROUND OFF ALL SHARP CORNERS WITH 0.40 mm. 3. TOLERANCES WILL BE AS PER IS:3965-1981 UNLESS OTHERWISE SPECIFIED		APPROVED	S.S.GARG	24-08-2010	
		SCALE		1:1	
PARTY'S NAME		SUNLIGHT ELECTRICALS, BANGALORE		AREA mm <sup>2</sup>	914.288
		AS PER DRAWING		PERIMETER mm.	286.259
PARTY'S DRAWING No.		6061 T6		WEIGHT kg/m	2.469
		ELECTRICAL SECTION		DRAWING No.	SECTION No.
ALLOY & TEMPER		25177		P-9417	-
		ELECTRICAL SECTION		S2205	S2205(ISSUE-2)
DESCRIPTION		ELECTRICAL SECTION		25177	25177