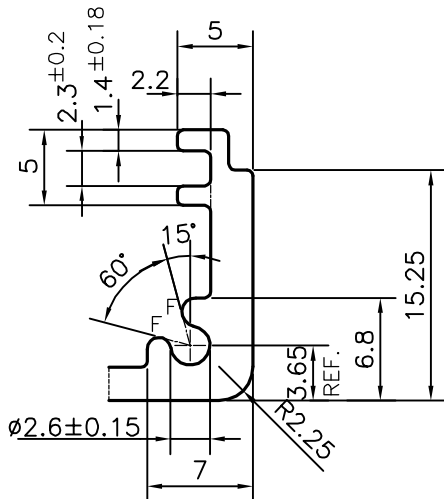
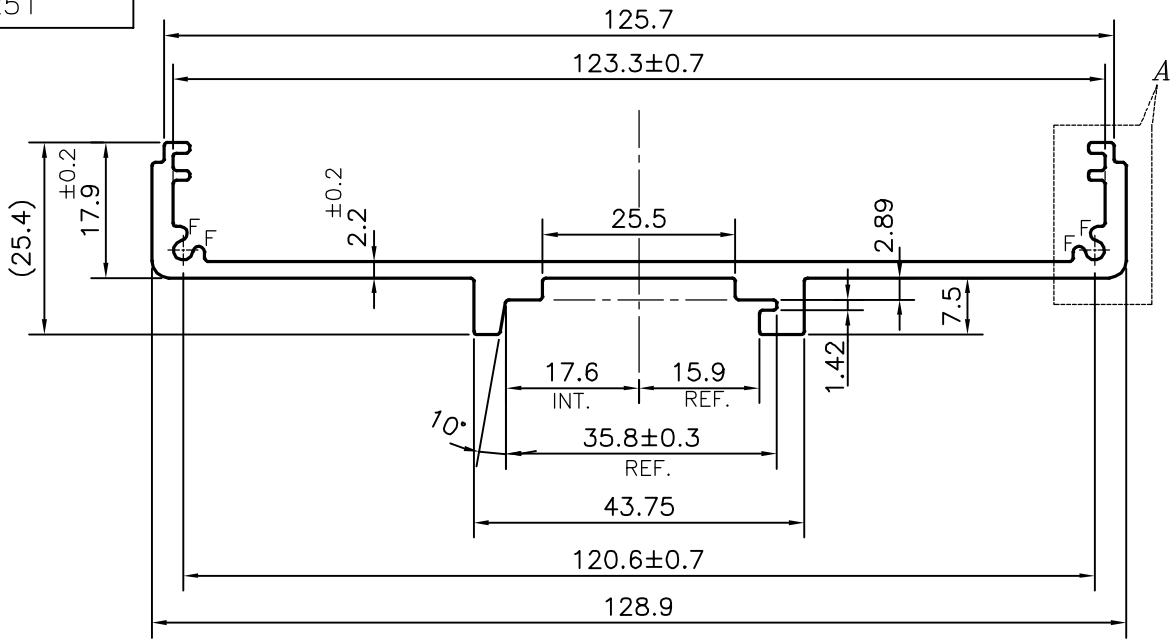


P-13787-5

S4237

25251



DETAIL OF "A"
SCALE 2:1

F = FULL RADIUS (4 PLACES)

- ☞ FLATNESS = 0.4 mm.
- ☞ PERPENDICULARITY = 0.4mm
- ☞ SYMMETRICITY TO BE MAINTAINED.

TOLERANCES ON OVERALL WIDTHS & WIDTHS ACROSS FLATS OF BARS, & REGULAR SECTIONS

UPTO 6.40mm - ±0.20	UPTO 32.0mm - ±0.38	UPTO 120.0mm - ±0.85	1. STRAIGHTNESS=1.7mm/M 2. TWIST=1.7mm/M 3. ANGULARITY= ±2°
UPTO 10.0mm - ±0.23	UPTO 50.0mm - ±0.46	UPTO 160.0mm - ±1.02	
UPTO 12.0mm - ±0.25	UPTO 60.0mm - ±0.53	UPTO 200.0mm - ±1.14	
UPTO 16.0mm - ±0.28	UPTO 80.0mm - ±0.69	UPTO 250.0mm - ±1.40	
UPTO 25.0mm - ±0.30	UPTO 100.0mm - ±0.75	UPTO 300.0mm - ±1.65	



SYMBOL OF QUALITY
AN ISO 9001 COMPANY

JINDAL ALUMINIUM LTD.
BANGALORE-560073 (INDIA)

	NAME	DATE
DRAWN	PARVESH	25-08-2014
CHECKED		
APPROVED	S.S.GARG	12-09-2014
SCALE		1:1
AREA mm ²		482.786
PERIMETER mm.		376.644
WEIGHT kg/m		1.304
DRAWING No.		SECTION No.
P-13787-5		-
S4237		S4237
25251		25251

1. ALL DIMENSIONS ARE IN mm.
2. ROUND OFF ALL SHARP CORNERS WITH 0.40 mm.
3. TOLERANCES WILL BE AS PER IS:3965-1981, UNLESS OTHERWISE SPECIFIED

PARTY'S NAME	VEER-O-METALS PVT. LTD., BANGALORE
PARTY'S DRAWING No.	TLVHUB320-01-02
ALLOY & TEMPER	6063 T6
DESCRIPTION	ELECTRICAL SECTION