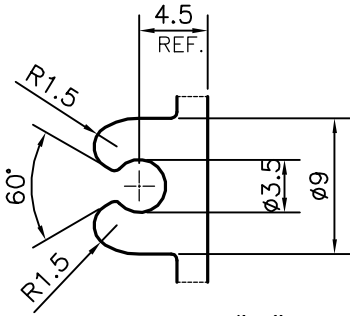
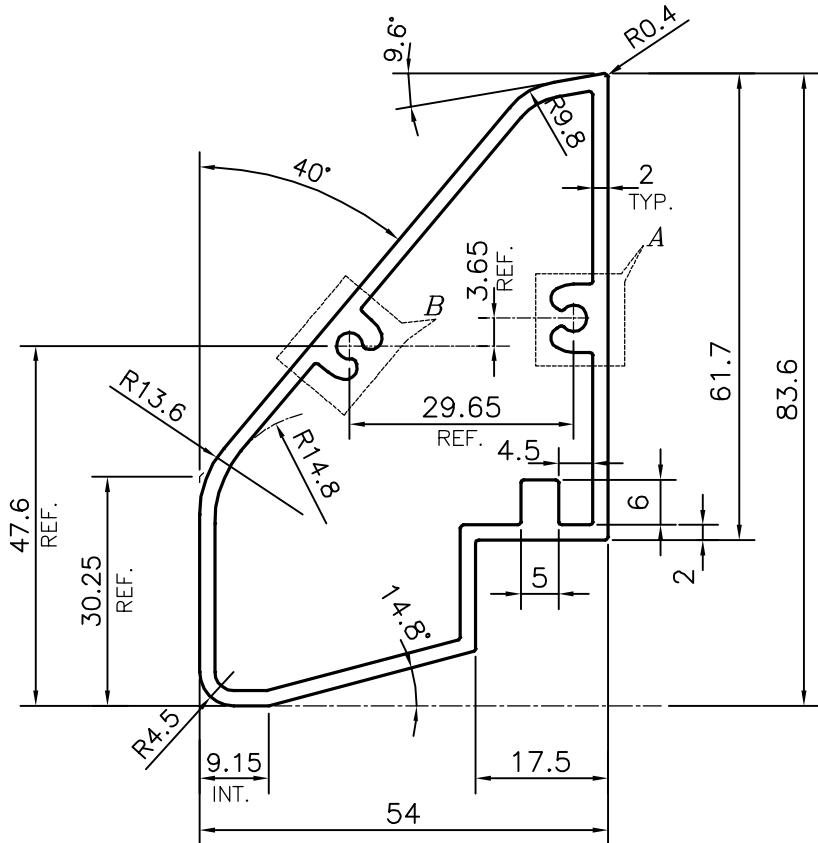


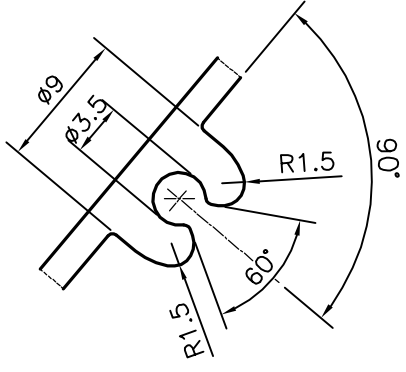
P-13109-1

S3933

25267




DETAIL OF "A"  
SCALE 2:1



DETAIL OF "B"  
SCALE 2:1

TOLERANCES ON OVERALL WIDTHS & WIDTHS ACROSS FLATS OF BARS, & REGULAR SECTIONS

UPTO 6.40mm - ±0.20	UPTO 32.0mm - ±0.38	UPTO 120.0mm - ±0.85	1. STRAIGHTNESS=1.7mm/M 2. TWIST=1.7mm/M 3. ANGULARITY= ±2' 4. FLATNESS =0.007xWIDTH
UPTO 10.0mm - ±0.23	UPTO 50.0mm - ±0.46	UPTO 160.0mm - ±1.02	
UPTO 12.0mm - ±0.25	UPTO 60.0mm - ±0.53	UPTO 200.0mm - ±1.14	
UPTO 16.0mm - ±0.28	UPTO 80.0mm - ±0.69	UPTO 250.0mm - ±1.40	
UPTO 25.0mm - ±0.30	UPTO 100.0mm - ±0.75	UPTO 300.0mm - ±1.65	

 SYMBOL OF QUALITY AN ISO 9001 COMPANY	<b>JINDAL ALUMINIUM LTD.</b> BANGALORE-560073 (INDIA)	DRAWN	NAME	DATE
		CHECKED	PARVESH	19-11-2013
1. ALL DIMENSIONS ARE IN mm. 2. ROUND OFF ALL SHARP CORNERS WITH 0.40 mm. 3. TOLERANCES WILL BE AS PER IS:6477-1983 , UNLESS OTHERWISE SPECIFIED		APPROVED	S.S.GARG	25-11-2013
		SCALE		1:1
PARTY'S NAME LITE TECHNOLOGY CO PVT. LTD.,THANE		AREA mm <sup>2</sup>		554.822
		PERIMETER mm.		236.532
PARTY'S DRAWING No. AS PER AUTO CAD DRAWING-20001-002-01		WEIGHT kg/m		1.498
		DRAWING No.	SECTION No.	
ALLOY & TEMPER 6063 T6		P-13109-1		-
		S3933		S3933
DESCRIPTION STREETLIGHT COMPONENT SECTION		25267		25267