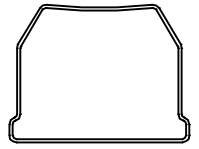


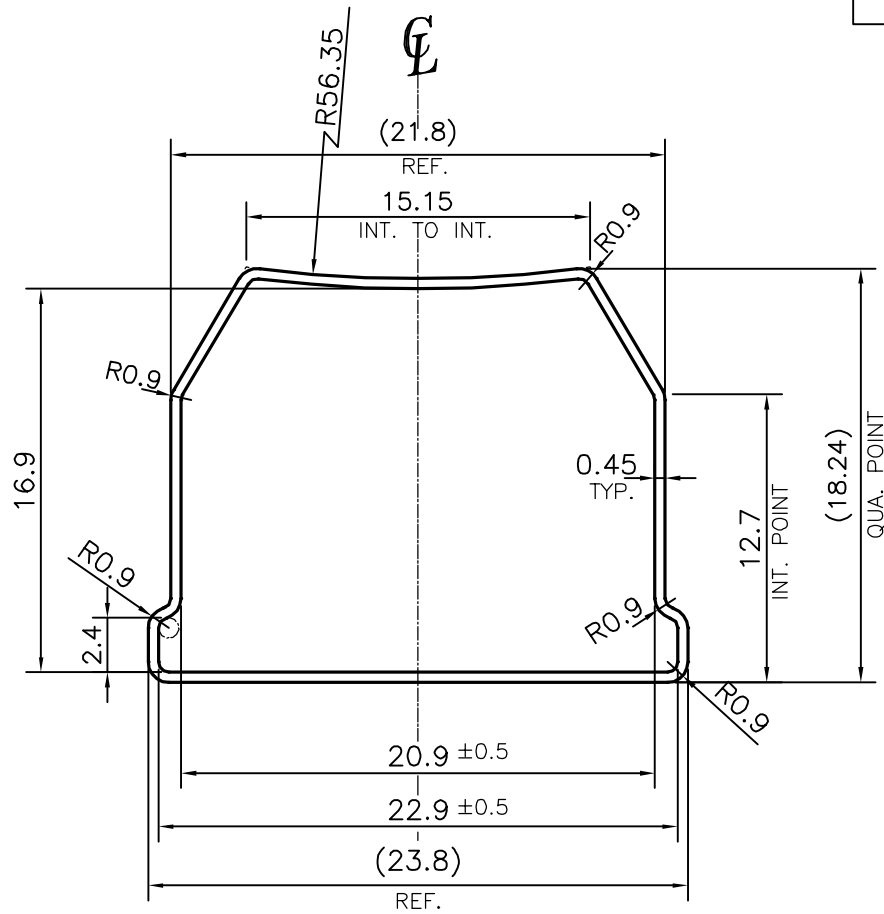
P-13309-2

S3987

25272



SCALE :- 1:1



TOLERANCES ON OVERALL WIDTHS & WIDTHS ACROSS FLATS OF BARS, & REGULAR SECTIONS

UPTO 6.40mm - ±0.20	UPTO 32.0mm - ±0.38	UPTO 120.0mm - ±0.85	1. STRAIGHTNESS=1.7mm/M 2. TWIST=1.7mm/M 3. ANGULARITY= ±2' 4. FLATNESS =0.007xWIDTH
UPTO 10.0mm - ±0.23	UPTO 50.0mm - ±0.46	UPTO 160.0mm - ±1.02	
UPTO 12.0mm - ±0.25	UPTO 60.0mm - ±0.53	UPTO 200.0mm - ±1.14	
UPTO 16.0mm - ±0.28	UPTO 80.0mm - ±0.69	UPTO 250.0mm - ±1.40	
UPTO 25.0mm - ±0.30	UPTO 100.0mm - ±0.75	UPTO 300.0mm - ±1.65	



SYMBOL OF QUALITY
AN ISO 9001 COMPANY

JINDAL ALUMINIUM LTD.
BANGALORE-560073 (INDIA)

	NAME	DATE
DRAWN	PARVESH	07-01-2014
CHECKED		
APPROVED	S.S.GARG	11-01-2014
SCALE		3:1
AREA mm ²		34.147
PERIMETER mm.		77.295
WEIGHT kg/m		0.092
DRAWING No.	SECTION No.	
P-13309-2	-	
S3987	S3987	
25272	25272	

1. ALL DIMENSIONS ARE IN mm.
2. ROUND OFF ALL SHARP CORNERS WITH 0.45 mm.
3. TOLERANCES WILL BE AS PER IS:6477-1983 , UNLESS OTHERWISE SPECIFIED

PARTY'S NAME	ANCHOR ELECTRICAL PVT. LTD., ROORKEE
PARTY'S DRAWING No.	AS PER AUTOCAD DRAWING-AEPL/LM/EE090101
ALLOY & TEMPER	6063 T6
DESCRIPTION	TUBE LIGHT SECTION-EXTRUSION FOR ECO, 28W