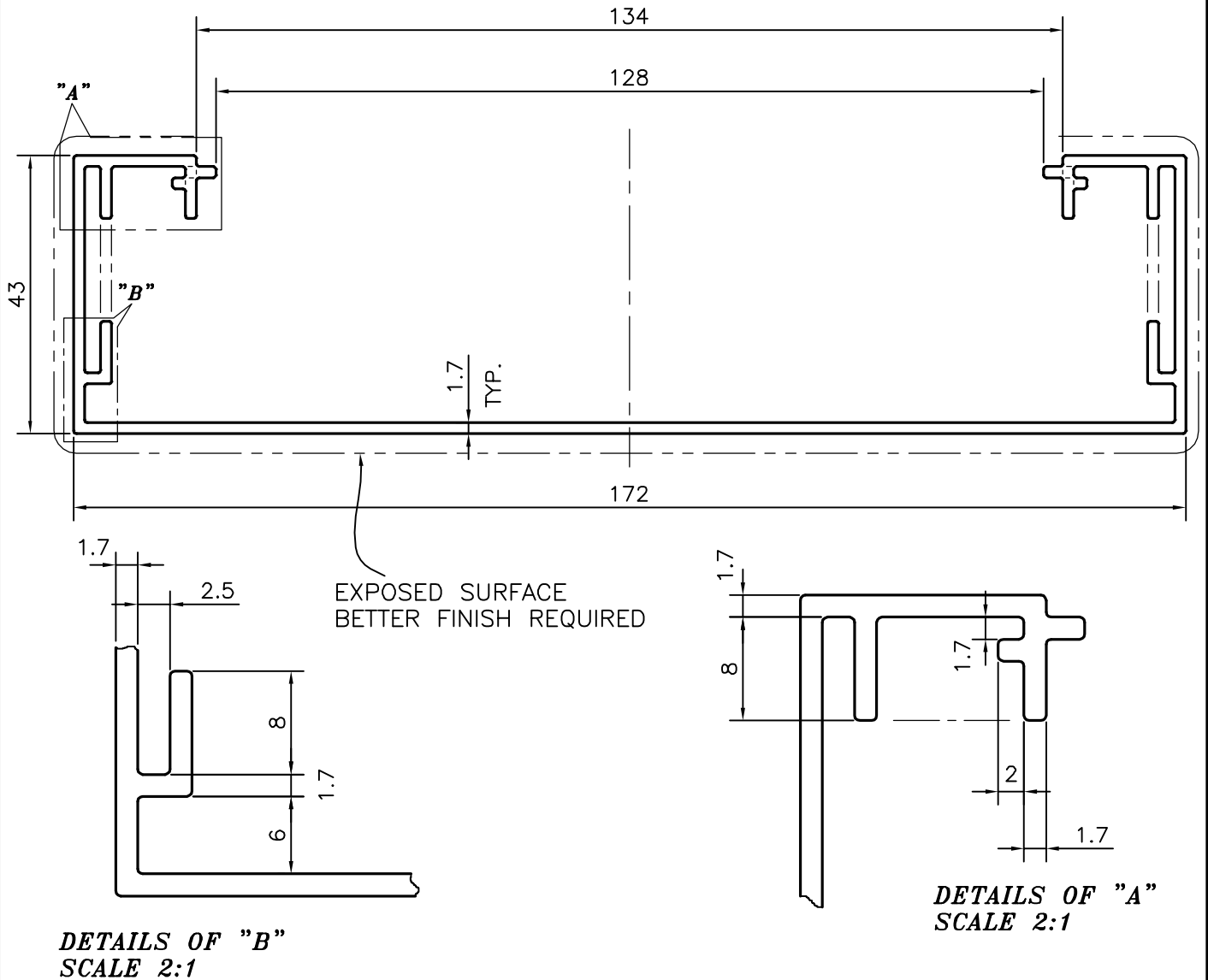


P-12647


X1665

25292



TOLERANCES ON OVERALL WIDTHS & WIDTHS ACROSS FLATS OF BARS & REGULAR SECTIONS

UPTO 6.40mm - ±0.20	UPTO 32.0mm - ±0.38	UPTO 120.0mm - ±0.85	UPTO 320.00mm - ±1.70
UPTO 10.0mm - ±0.23	UPTO 50.0mm - ±0.46	UPTO 160.0mm - ±1.02	
UPTO 12.0mm - ±0.25	UPTO 60.0mm - ±0.53	UPTO 200.0mm - ±1.14	
UPTO 16.0mm - ±0.28	UPTO 80.0mm - ±0.69	UPTO 250.0mm - ±1.40	
UPTO 25.0mm - ±0.30	UPTO 100.0mm - ±0.75	UPTO 300.0mm - ±1.65	

 SYMBOL OF QUALITY AN ISO 9001 COMPANY	JINDAL ALUMINIUM LTD. BANGALORE-560073 (INDIA)	DRAWN	NAME	DATE
		CHECKED	SRIVATHSA	05-04-2013
1. ALL DIMENSIONS ARE IN mm. 2. ROUND OFF ALL SHARP CORNERS WITH 0.40 mm. 3. TOLERANCES WILL BE AS PER IS:3965-1981 ,UNLESS OTHERWISE SPECIFIED		APPROVED	S.S.GARG	10-04-2013
		SCALE		1:1
PARTY'S NAME VIZION LIGHTS PVT. LTD., NEW DELHI		AREA mm ²		604.383
		PERIMETER mm.		705.673
PARTY'S DRAWING No. AS PER SKETCH		WEIGHT kg/m		1.632
		DRAWING No.	SECTION No.	
ALLOY & TEMPER HE9 WP		P-12647	-	
		X1665	X1665	
DESCRIPTION MISC. PROFILE (LIGHTING FIXTURE)		25292	25292	