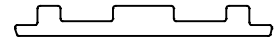


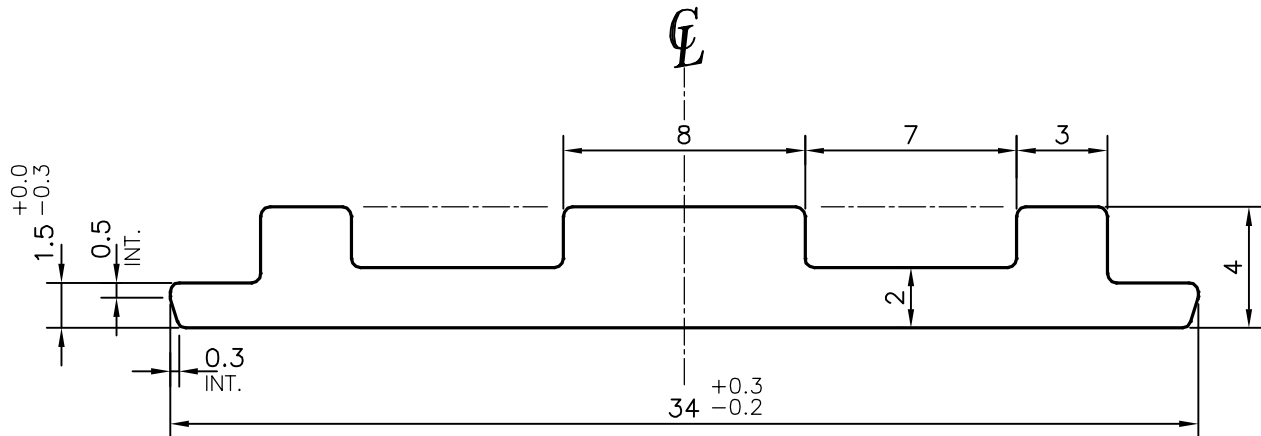
P-13563

S4095

25294



SCALE: - 1:1



ISSUE (2) :-

TOLERANCE ADDED ON DIMENSION :-

$$\varnothing 34.0 \begin{matrix} +0.3 \\ -0.2 \end{matrix}$$

$$\varnothing 1.5 \begin{matrix} +0.0 \\ -0.3 \end{matrix}$$

TOLERANCES ON OVERALL WIDTHS & WIDTHS ACROSS FLATS OF BARS, & REGULAR SECTIONS

UPTO 6.40mm - ± 0.20	UPTO 32.0mm - ± 0.38	UPTO 120.0mm - ± 0.85	1. STRAIGHTNESS=1.7mm/M 2. TWIST=1.7mm/M 3. ANGULARITY= $\pm 2^\circ$ 4. FLATNESS =0.007xWIDTH
UPTO 10.0mm - ± 0.23	UPTO 50.0mm - ± 0.46	UPTO 160.0mm - ± 1.02	
UPTO 12.0mm - ± 0.25	UPTO 60.0mm - ± 0.53	UPTO 200.0mm - ± 1.14	
UPTO 16.0mm - ± 0.28	UPTO 80.0mm - ± 0.69	UPTO 250.0mm - ± 1.40	
UPTO 25.0mm - ± 0.30	UPTO 100.0mm - ± 0.75	UPTO 300.0mm - ± 1.65	


 SYMBOL OF QUALITY
AN ISO 9001 COMPANY

JINDAL ALUMINIUM LTD.
BANGALORE-560073 (INDIA)

	NAME	DATE
DRAWN	PARVESH	30-04-2014
CHECKED		
APPROVED	S.S.GARG	06-06-2014

1. ALL DIMENSIONS ARE IN mm.
2. ROUND OFF ALL SHARP CORNERS WITH 0.30 mm.
3. TOLERANCES WILL BE AS PER IS:3965-1981, UNLESS OTHERWISE SPECIFIED

SCALE	4:1
AREA mm ²	92.642
PERIMETER mm.	81.559
WEIGHT kg/m	0.25

PARTY'S NAME BHANU ENGINEERS, FARIDABAD

DRAWING No. SECTION No.

PARTY'S DRAWING No. AS PER DRAWING

P-13563 -

ALLOY & TEMPER 6063 T6

S4095 S4095(ISSUE-2)

25294 25294

DESCRIPTION MISC SECTION