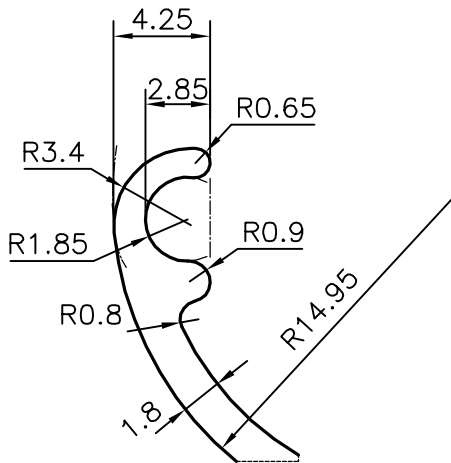
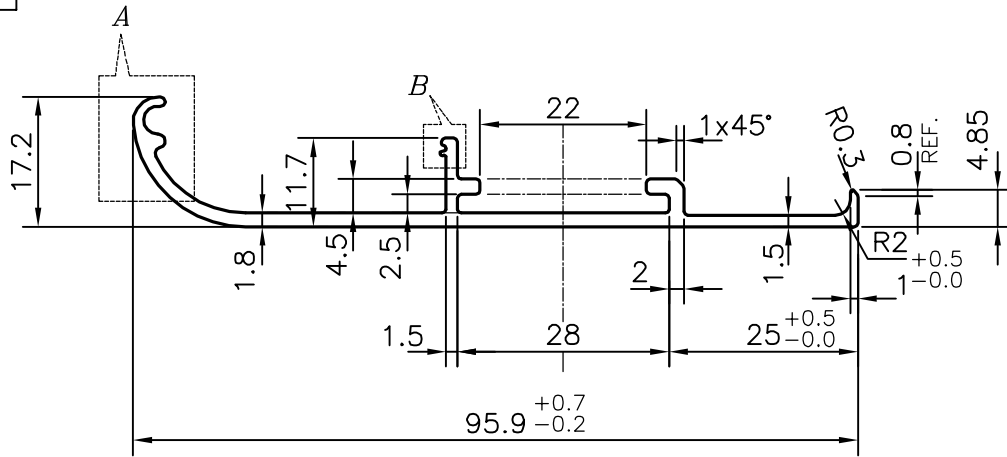


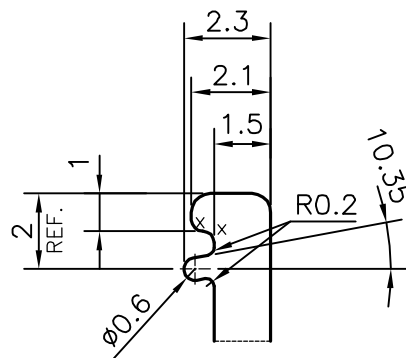
P-13658

S4155

25295



DETAIL OF "A"
SCALE 3:1



DETAIL OF "A"
SCALE 5:1

ISSUE-2

TOLERANCES ADDED ON DIMENSIONS:-

- 95.9 ^{+0.7}/_{-0.2}
- 25.0 ^{+0.5}/_{-0.0}
- 1.00 ^{+0.5}/_{-0.0}

X = RADIUS 0.3 mm. (2 PLACES)

TOLERANCES ON OVERALL WIDTHS & WIDTHS ACROSS FLATS OF BARS, & REGULAR SECTIONS

UPTO 6.40mm - ±0.20	UPTO 32.0mm - ±0.38	UPTO 120.0mm - ±0.85	1. STRAIGHTNESS=1.7mm/M 2. TWIST=1.7mm/M 3. ANGULARITY= ±2° 4. FLATNESS =0.007xWIDTH
UPTO 10.0mm - ±0.23	UPTO 50.0mm - ±0.46	UPTO 160.0mm - ±1.02	
UPTO 12.0mm - ±0.25	UPTO 60.0mm - ±0.53	UPTO 200.0mm - ±1.14	
UPTO 16.0mm - ±0.28	UPTO 80.0mm - ±0.69	UPTO 250.0mm - ±1.40	
UPTO 25.0mm - ±0.30	UPTO 100.0mm - ±0.75	UPTO 300.0mm - ±1.65	



SYMBOL OF QUALITY
AN ISO 9001 COMPANY

JINDAL ALUMINIUM LTD.
BANGALORE-560073 (INDIA)

	NAME	DATE
DRAWN	PARVESH	30-08-2014
CHECKED		
APPROVED	S.S.GARG	04-09-2014

- 1. ALL DIMENSIONS ARE IN mm.
- 2. ROUND OFF ALL SHARP CORNERS WITH 0.50 mm.
- 3. TOLERANCES WILL BE AS PER IS:3965-1981, UNLESS OTHERWISE SPECIFIED

SCALE	1:1
AREA mm ²	226.905
PERIMETER mm.	263.467
WEIGHT kg/m	0.613

PARTY'S NAME	ALUPLEX SYSTEMS, FARIDABAD
PARTY'S DRAWING No.	AS PER AUTOCAD DRAWING-CL 105
ALLOY & TEMPER	6063 T6
DESCRIPTION	ELECTRICAL SECTION

DRAWING No.	SECTION No.
P-13658	-
S4155	S4155 (ISSUE-2)
25295	25295