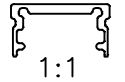


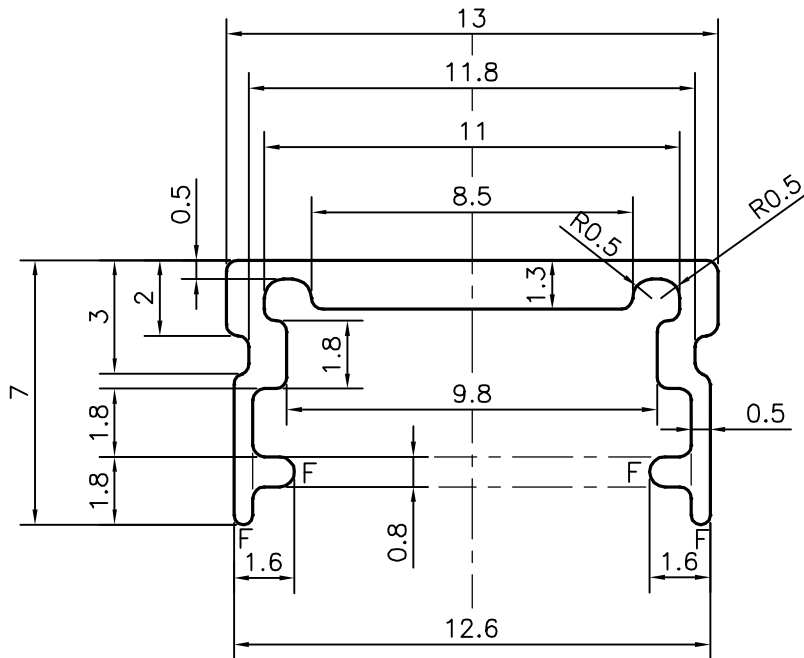
P-15582

S4842

25296




1:1



UNSPECIFIED RADIUS 0.3 mm

F = FULL RADIUS (4 PLACES)

| | | | | |
|--|---|----------------------|-------------|-------------|
|  SYMBOL OF QUALITY AN ISO 9001 COMPANY | JINDAL ALUMINIUM LTD. <i>BANGALORE-560073 (INDIA)</i> | | NAME | DATE |
| | | DRAWN | J.P.KAUSHIK | 04-02-2016 |
| 1. ALL DIMENSIONS ARE IN mm. 2. ROUND OFF ALL SHARP CORNERS WITH 0.40 mm. 3. TOLERANCES WILL BE AS PER IS:3965-1981 UNLESS OTHERWISE SPECIFIED | | CHECKED | | |
| | | APPROVED | B. NATARAJ | 11-02-2016 |
| PARTY'S NAME | | SCALE | | 5:1 |
| | | AREA mm ² | | 25.27 |
| PARTY'S DRAWING No. | | PERIMETER mm. | | 57.996 |
| | | WEIGHT kg/m | | 0.068 |
| ALLOY & TEMPER | | DRAWING No. | | SECTION No. |
| | | 6063 T6 | | |
| DESCRIPTION | | P-15582 | | - |
| | | S4842 | | S4842 |
| | | 25296 | | 25296 |
| | | | | |
| | | | | |