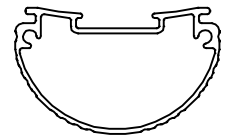


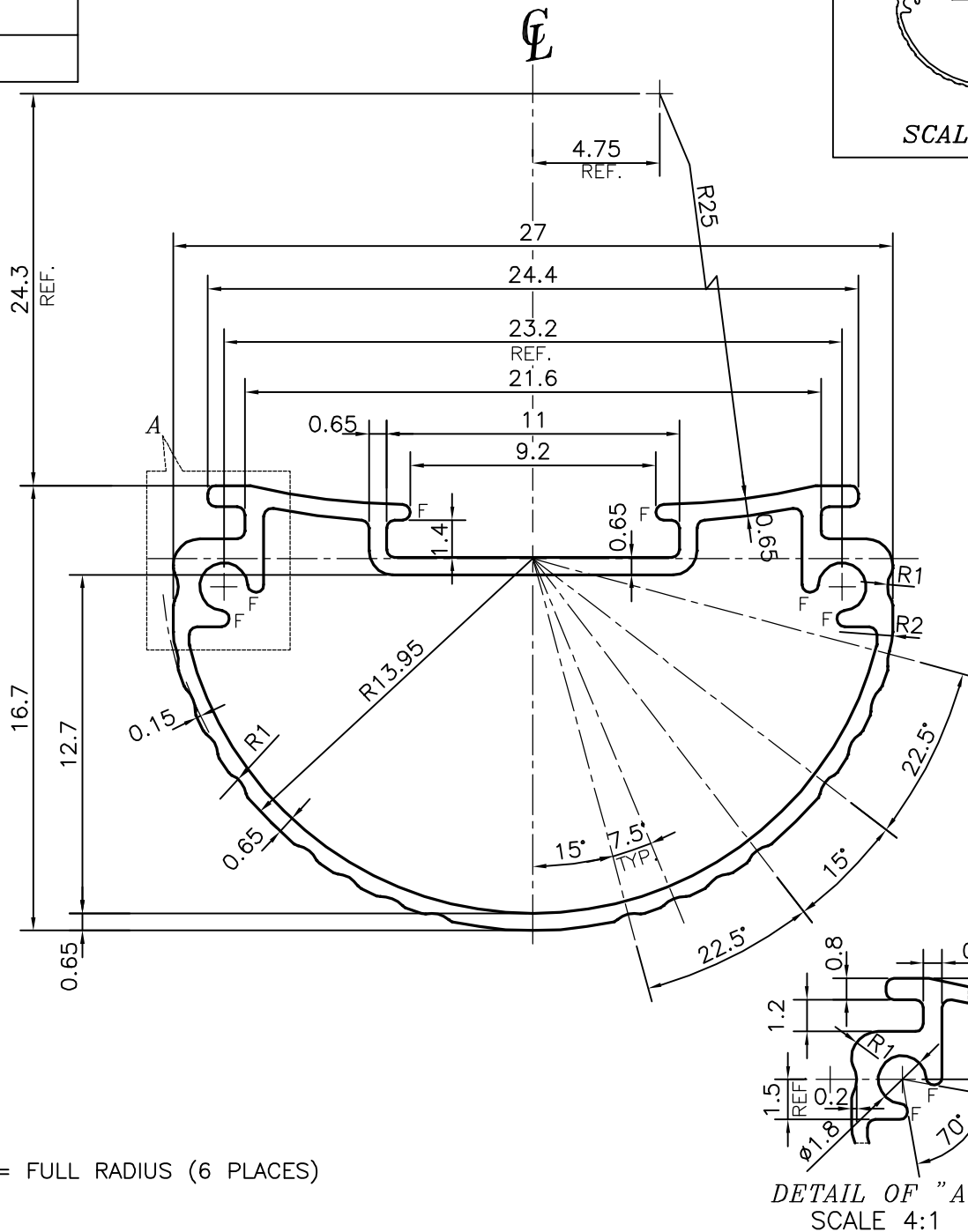
P-13788

S4200

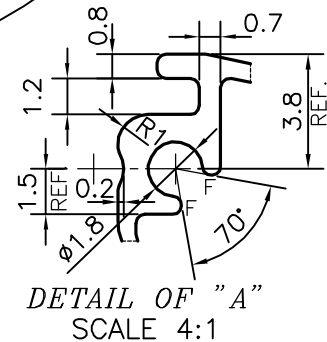
25299



SCALE: - 1:1



F = FULL RADIUS (6 PLACES)



TOLERANCES ON OVERALL WIDTHS & WIDTHS ACROSS FLATS OF BARS, & REGULAR SECTIONS

UPTO 6.40mm - ±0.20	UPTO 32.0mm - ±0.38	UPTO 120.0mm - ±0.85	1. STRAIGHTNESS=1.7mm/M 2. TWIST=1.7mm/M 3. ANGULARITY= ±2° 4. FLATNESS =0.007xWIDTH
UPTO 10.0mm - ±0.23	UPTO 50.0mm - ±0.46	UPTO 160.0mm - ±1.02	
UPTO 12.0mm - ±0.25	UPTO 60.0mm - ±0.53	UPTO 200.0mm - ±1.14	
UPTO 16.0mm - ±0.28	UPTO 80.0mm - ±0.69	UPTO 250.0mm - ±1.40	
UPTO 25.0mm - ±0.30	UPTO 100.0mm - ±0.75	UPTO 300.0mm - ±1.65	



SYMBOL OF QUALITY  
AN ISO 9001 COMPANY

**JINDAL ALUMINIUM LTD.**  
BANGALORE-560073 (INDIA)

	NAME	DATE
DRAWN	PARVESH	30-07-2014
CHECKED		
APPROVED	S.S.GARG	11-08-2014
SCALE		4:1
AREA mm <sup>2</sup>		58.07
PERIMETER mm.		87.391
WEIGHT kg/m		0.157
DRAWING No.	SECTION No.	
P-13788	-	
S4200	S4200	
25299	25299	

1. ALL DIMENSIONS ARE IN mm.
2. ROUND OFF ALL SHARP CORNERS WITH 0.30 mm.
3. TOLERANCES WILL BE AS PER IS:6477-1983 , UNLESS OTHERWISE SPECIFIED

PARTY'S NAME	AXIS LIGHTING PRODUCTS, PUNE
PARTY'S DRAWING No.	AS PER REQUIRMENT
ALLOY & TEMPER	HE9 WP
DESCRIPTION	TUBE LIGHT SECTION