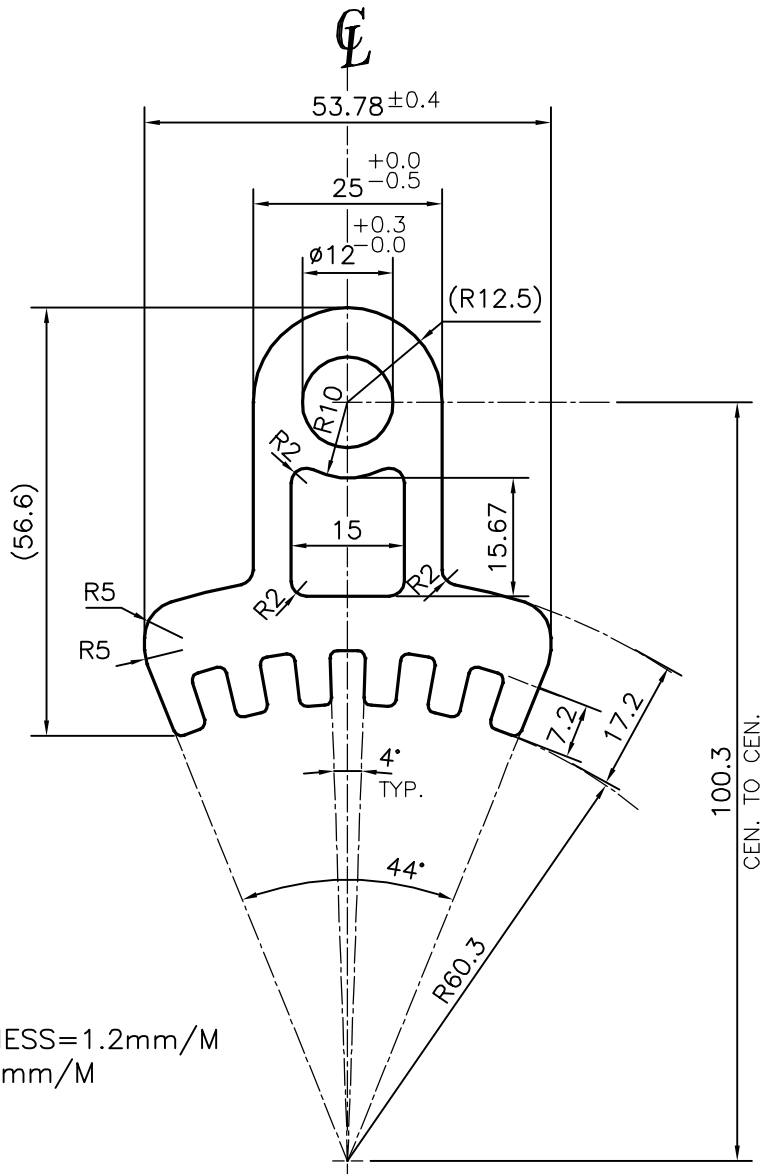


P-13776-1

S4202

25300



1. STRAIGHTNESS=1.2mm/M
2. TWIST=1.2mm/M

TOLERANCES ON OVERALL WIDTHS & WIDTHS ACROSS FLATS OF BARS, & REGULAR SECTIONS

|                     |                      |                      |   |
|---------------------|----------------------|----------------------|---|
| UPTO 6.40mm - ±0.20 | UPTO 32.0mm - ±0.38  | UPTO 120.0mm - ±0.85 | 1. STRAIGHTNESS=1.2mm/M<br>2. TWIST=1.2mm/M<br>3. ANGULARITY= ±2°<br>4. FLATNESS =0.007xWIDTH |
| UPTO 10.0mm - ±0.23 | UPTO 50.0mm - ±0.46  | UPTO 160.0mm - ±1.02 |   |
| UPTO 12.0mm - ±0.25 | UPTO 60.0mm - ±0.53  | UPTO 200.0mm - ±1.14 |   |
| UPTO 16.0mm - ±0.28 | UPTO 80.0mm - ±0.69  | UPTO 250.0mm - ±1.40 |   |
| UPTO 25.0mm - ±0.30 | UPTO 100.0mm - ±0.75 | UPTO 300.0mm - ±1.65 |   |



SYMBOL OF QUALITY  
AN ISO 9001 COMPANY

**JINDAL ALUMINIUM LTD.**  
BANGALORE-560073 (INDIA)

|          | NAME     | DATE       |
|----------|----------|------------|
| DRAWN    | PARVESH  | 05-08-2014 |
| CHECKED  |          |            |
| APPROVED | S.S.GARG | 13-08-2014 |

1. ALL DIMENSIONS ARE IN mm.
2. ROUND OFF ALL SHARP CORNERS WITH 1.00 mm.
3. TOLERANCES WILL BE AS PER IS:6477-1983, UNLESS OTHERWISE SPECIFIED

|                      |          |
|----------------------|----------|
| SCALE                | 1:1      |
| AREA mm <sup>2</sup> | 1200.398 |
| PERIMETER mm.        | 260.277  |
| WEIGHT kg/m          | 3.241    |

|                     |  |
|---------------------|--|
| PARTY'S NAME        | PBJ INDUSTRIAL ELECTRONICS PVT. LTD., MUMBAI |
| PARTY'S DRAWING No. | A-5342-02F/04                                |
| ALLOY & TEMPER      | 6005 T6                                      |
| DESCRIPTION         | ELECTRICAL SECTION-ROLLER 6 FIN SEGMENT      |

| DRAWING No. | SECTION No. |
|-------------|-------------|
| P-13776-1   | -           |
| S4202       | S4202       |
| 25300       | 25300       |