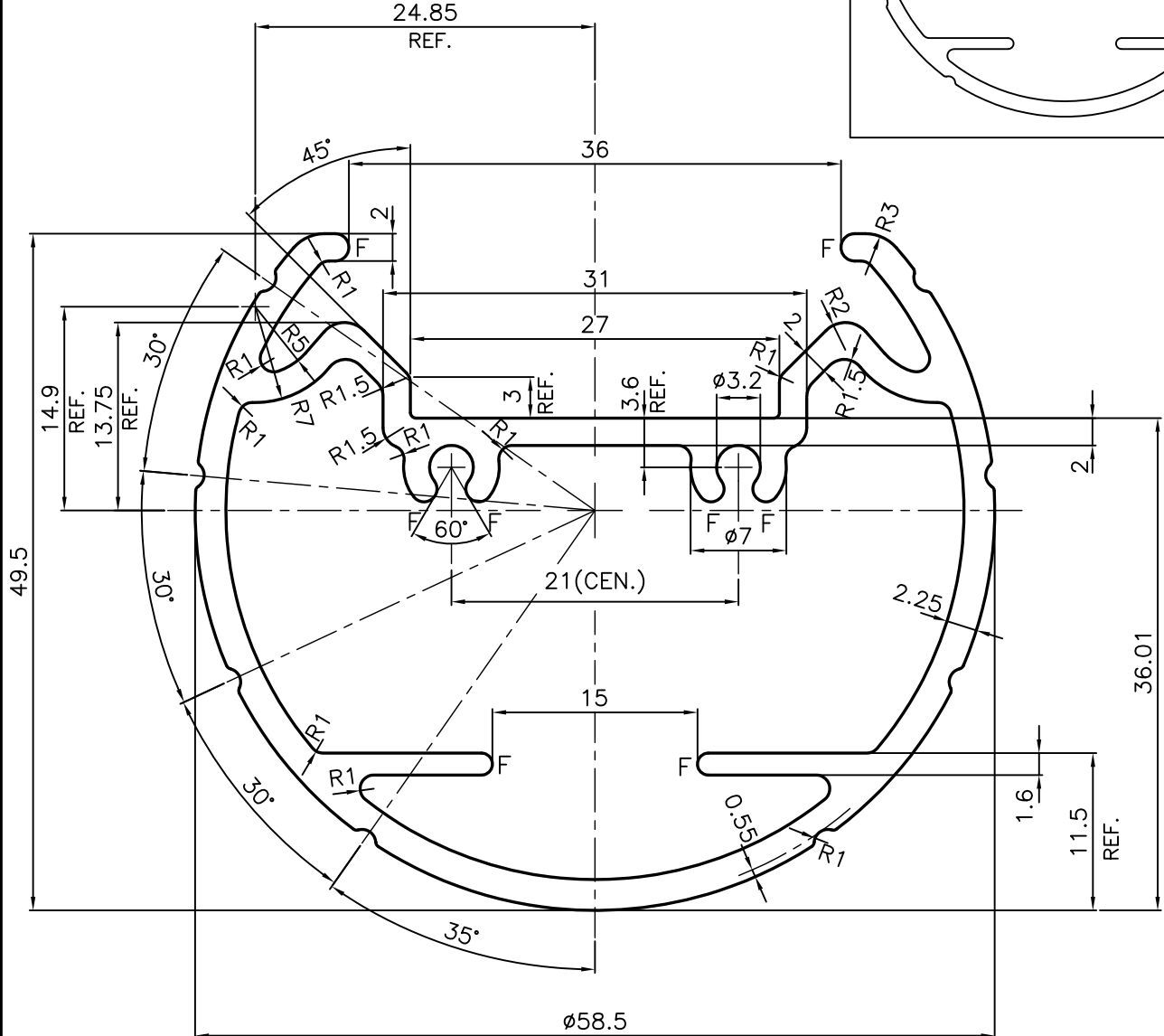
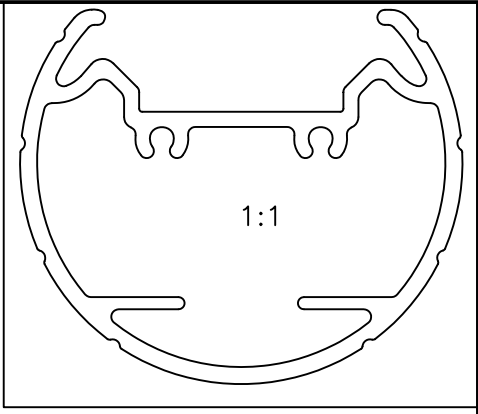



P-17327
S5465
25358



F = FULL RADIUS(8 PLACES)

TOLERANCES ON OVERALL WIDTHS & WIDTHS ACROSS FLATS OF BARS, & REGULAR SECTIONS			
UPTO 6.40mm - ±0.20	UPTO 32.0mm - ±0.38	UPTO 120.0mm - ±0.85	UPTO 320.00mm - ±1.70
UPTO 10.0mm - ±0.23	UPTO 50.0mm - ±0.46	UPTO 160.0mm - ±1.02	
UPTO 12.0mm - ±0.25	UPTO 60.0mm - ±0.53	UPTO 200.0mm - ±1.14	
UPTO 16.0mm - ±0.28	UPTO 80.0mm - ±0.69	UPTO 250.0mm - ±1.40	
UPTO 25.0mm - ±0.30	UPTO 100.0mm - ±0.75	UPTO 300.0mm - ±1.65	

 SYMBOL OF QUALITY AN ISO 9001 COMPANY	JINDAL ALUMINIUM LTD. BANGALORE-560073 (INDIA)	DRAWN	J.P.KAUSHIK	DATE	18-07-2017
		CHECKED			
1. ALL DIMENSIONS ARE IN mm. 2. ROUND OFF ALL SHARP CORNERS WITH 0.40 mm. 3. TOLERANCES WILL BE AS PER,IS:6477-1983 UNLESS OTHERWISE SPECIFIED		APPROVED	B.NATARAJA		29-06-2017
		SCALE			2:1
PARTY'S NAME YSL ELECTRONICS, BANGALORE		AREA mm ²			501.874
		PERIMETER mm.			229.676
PARTY'S DRAWING No. AS PER DRAWING YSL-913-1-RO		WEIGHT kg/m			1.355
		DRAWING No.	P-17327	SECTION No.	-
ALLOY & TEMPER HE9 WP			S5465		S5465
			25358		25358
DESCRIPTION TUBE LIGHT SECTION					