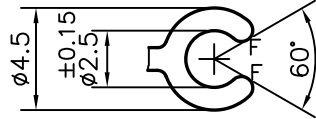
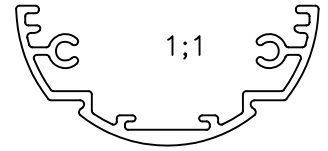


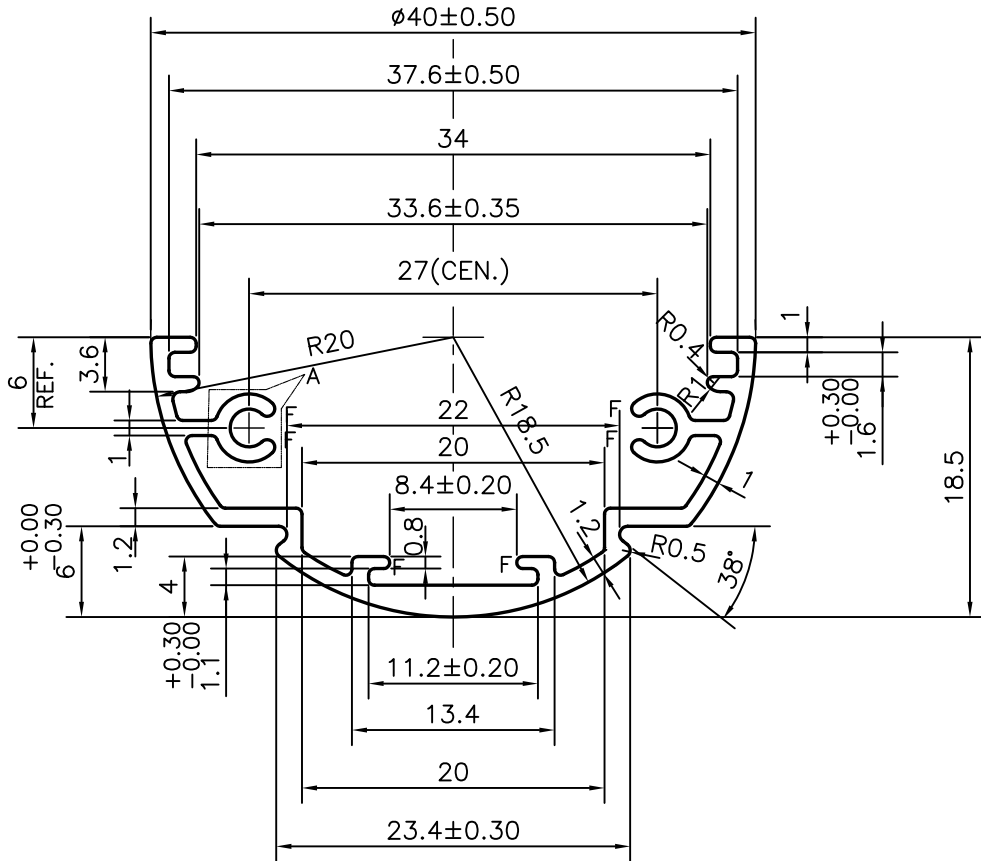
P-17358-1

S5494

25359



DETAIL "A"
SCALE 3:1



F = FULL RADIUS (6 PLACES)

TOLERANCES ON OVERALL WIDTHS & WIDTHS ACROSS FLATS OF BARS, & REGULAR SECTIONS

| | | | |
|---------------------|----------------------|----------------------|-----------------------|
| UPTO 6.40mm - ±0.20 | UPTO 32.0mm - ±0.38 | UPTO 120.0mm - ±0.85 | UPTO 320.00mm - ±1.70 |
| UPTO 10.0mm - ±0.23 | UPTO 50.0mm - ±0.46 | UPTO 160.0mm - ±1.02 | |
| UPTO 12.0mm - ±0.25 | UPTO 60.0mm - ±0.53 | UPTO 200.0mm - ±1.14 | |
| UPTO 16.0mm - ±0.28 | UPTO 80.0mm - ±0.69 | UPTO 250.0mm - ±1.40 | |
| UPTO 25.0mm - ±0.30 | UPTO 100.0mm - ±0.75 | UPTO 300.0mm - ±1.65 | |



SYMBOL OF QUALITY
AN ISO 9001 COMPANY

JINDAL ALUMINIUM LTD.
BANGALORE-560073 (INDIA)

| | | |
|----------|-------------|------------|
| | NAME | DATE |
| DRAWN | J.P.KAUSHIK | 02-09-2017 |
| CHECKED | | |
| APPROVED | B.NATARAJA | 04-09-2017 |

- ALL DIMENSIONS ARE IN mm.
- ROUND OFF ALL SHARP CORNERS WITH 0.40 mm.
- TOLERANCES WILL BE AS PER,IS:3965-1981 UNLESS OTHERWISE SPECIFIED

| | |
|----------------------|---------|
| SCALE | 2:1 |
| AREA mm ² | 114.476 |
| PERIMETER mm. | 192.448 |
| WEIGHT kg/m | 0.309 |

| | |
|---------------------|---------------------------------|
| PARTY'S NAME | PARAMOUNT INDUSTRIES, BANGALORE |
| PARTY'S DRAWING No. | 01-T-P |
| ALLOY & TEMPER | HE9 WP |
| DESCRIPTION | TUBE LIGHT SECTION |

| | |
|-------------|-------------|
| DRAWING No. | SECTION No. |
| P-17358-1 | - |
| S5494 | S5494 |
| 25359 | 25359 |