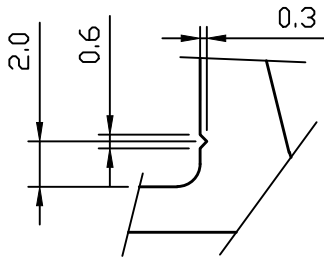


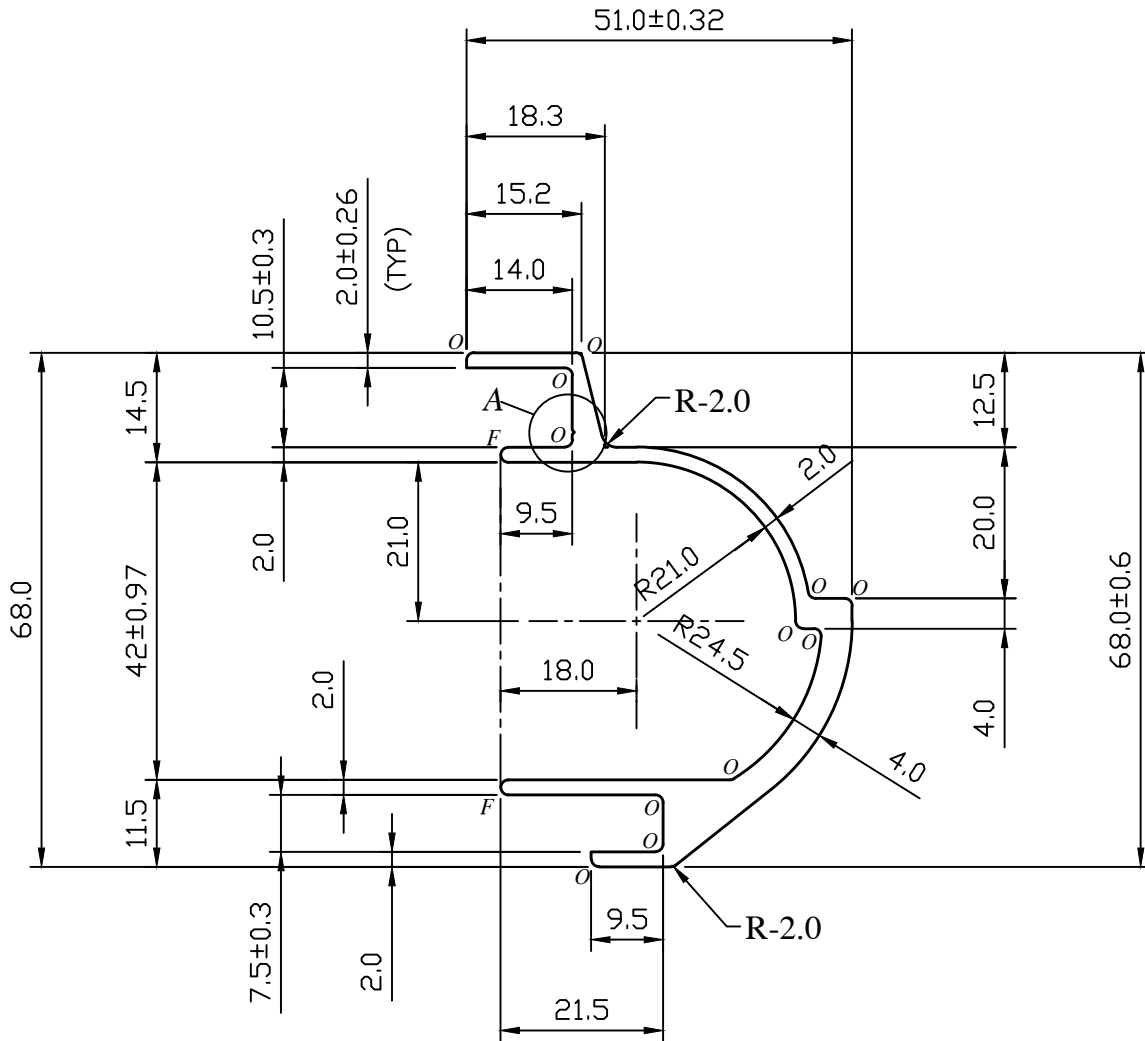
IAL-D-4227

25446



Detail At - A

Note:-

 $o = 1.0R$  $F = \text{Full Radius}$ 

COVER FOR HINGE

TWIST =  $1/4^\circ/300\text{M.M.M.}$   
 STRAIGHTNESS =  $1.5\text{ M.M./MTR.}$   
 ANGULARITY =  $\pm 2^\circ$



SYMBOL OF QUALITY  
AN ISO 9001 COMPANY

**JINDAL ALUMINIUM LTD.**  
BANGALORE-560073 (INDIA)

	NAME	DATE
DRAWN	S.K.SHARMA	03-03-2022
CHECKED		
APPROVED		

- ALL DIMENSIONS ARE IN mm.
- ROUND OFF ALL SHARP CORNERS WITH 0.40 mm.
- TOLERANCES WILL BE AS PER BS:EN-755-9 , UNLESS OTHERWISE SPECIFIED

SCALE	1:1&2:1
AREA mm <sup>2</sup>	450.0
PERIMETER mm.	311.3
WEIGHT kg/m	1.215

PARTY'S NAME M/S. JBM INDUSTRIES

DRAWING No. SECTION No.

PARTY'S DRAWING No. AS PER DRAWING

IAL-D-4227  
25446 25446

ALLOY & TEMPER 6063-T6

DESCRIPTION ELECTRICAL SECTION