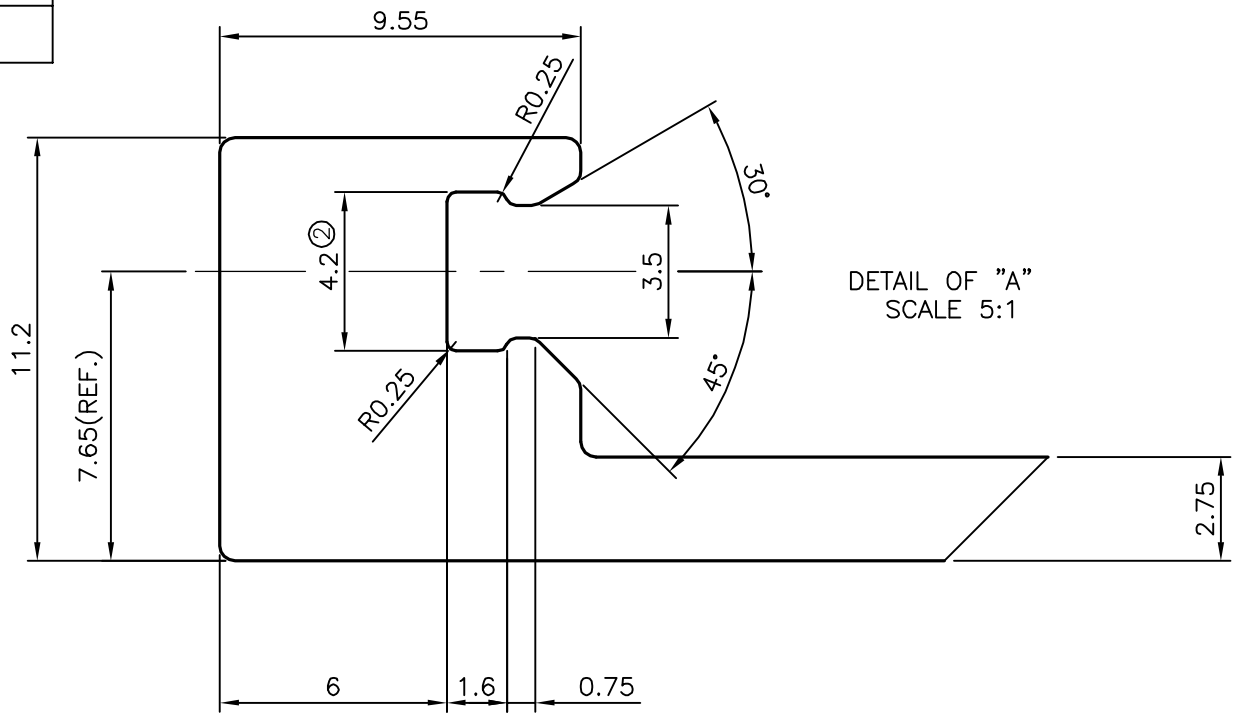
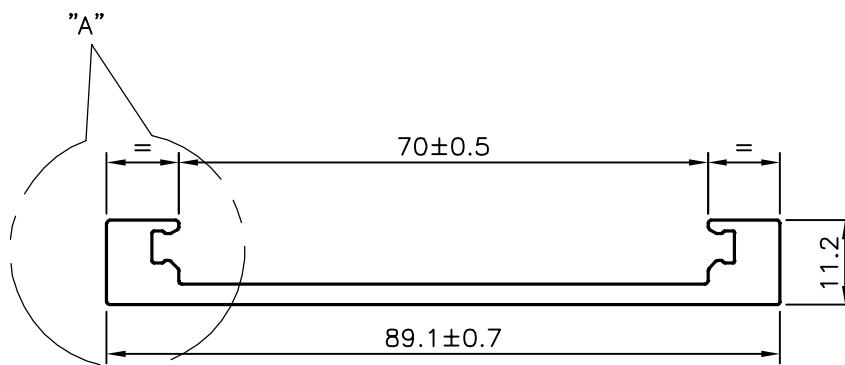


7590

25726

DETAIL OF "A"
SCALE 5:1**ISSUE-2**

DIMENSION CHANGED FROM 4.1 mm TO 4.2 mm

WEIGHT ALSO CHANGED FROM 1.041 kg/m TO 1.018 kg/m

SYMBOL OF QUALITY
AN ISO 9001 COMPANY**JINDAL ALUMINIUM LTD.**
BANGALORE-560073 (INDIA)

1. ALL DIMENSIONS ARE IN mm.
2. ROUND OFF ALL SHARP CORNERS WITH 0.4 mm.
3. TOLERANCES WILL BE AS PER IS:3965-1981 UNLESS OTHERWISE SPECIFIED

PARTY'S NAME DATTA ELECTRO-MECHANICAL DEVICES.,
BANGALORE

PARTY'S DRAWING No. -

ALLOY & TEMPER HE9 WP

DESCRIPTION EXTRUSION FOR OUTER BODY

	NAME	DATE
DRAWN	J.P.KAUSHIK	19-04-2016
CHECKED		
APPROVED	S.S. GARG	21-04-2016
SCALE		1:1
AREA mm ²		376.958
PERIMETER mm.		229.337
WEIGHT kg/m		1.018
DRAWING No.	SECTION No.	
7590	7590	
25726	25726(ISSUE-2)	