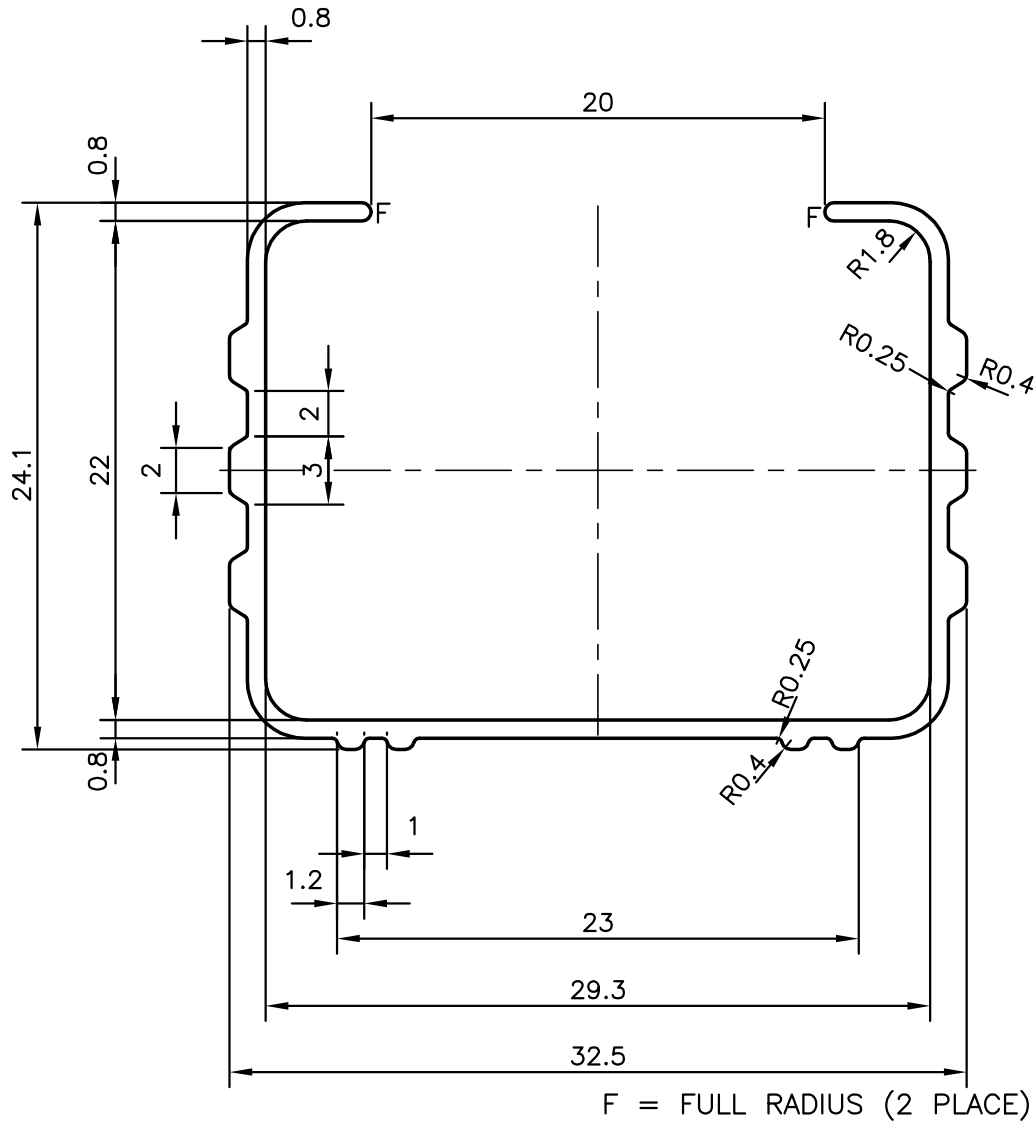
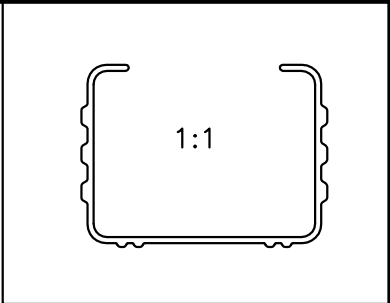


P-9234-2
S2139
25781



JINDAL ALUMINIUM LTD.
 BANGALORE-560073 (INDIA)

	NAME	DATE
DRAWN	J.P.KAUSHIK	27-05-2009
CHECKED		
APPROVED		

1. ALL DIMENSIONS ARE IN mm.
2. ROUND OFF ALL SHARP CORNERS WITH 0.40 mm.
3. TOLERANCES WILL BE AS PER IS:3965-1981 UNLESS OTHERWISE SPECIFIED

SCALE	3:1
AREA mm ²	79.769
PERIMETER mm.	171.77
WEIGHT kg/m	0.215

PARTY'S NAME	SPRADECOM ELECTRO CONTROLS, MUMBAI
PARTY'S DRAWING No.	A4-704-M153/R2
ALLOY & TEMPER	HE9 WP
DESCRIPTION	MISC. CHANNEL

DRAWING No.	SECTION No.
P-9234-2	-
S2139	S2139
25781	25781