

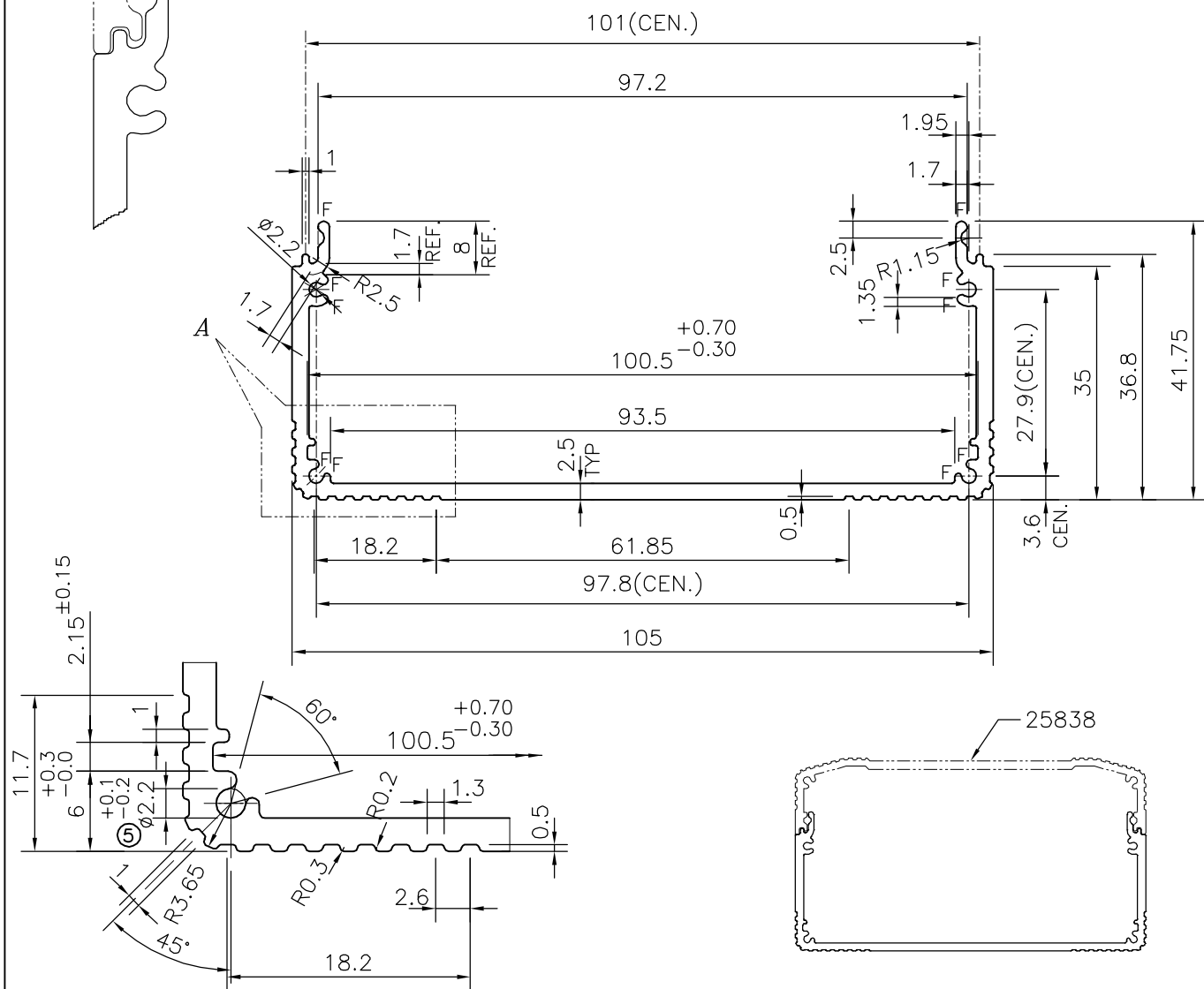
P-15442-2
S4848
25837

ISSUE-2
DIMENSION CHANGED & TOLERANCE ADDED FROM 100 TO 100.5^{+0.70}_{-0.30} mm
DIMENSION CHANGED FROM 94 TO 93.5 mm
WEIGHT ALSO CHANGED FROM 1.235 kg/m TO 1.233 kg/m

ISSUE-3
TOLERANCE CHANGED ON DIMENSION 2.15 mm. ^{+0.25}_{-0.00} TO ±0.15
TOLERANCE ADDED ON DIMENSION 6.1^{+0.3}_{-0.0}
AS PER CUSTOMER'S E-MAIL DATED 04-12-2017.


ISSUE-4
DIMENSION CHANGED FROM 6.1 TO 6.0 mm.

ISSUE-5
DIMENSION CHANGED FROM Ø2.3 TO 2.2^{+0.1}_{-0.2} mm.



DETAIL OF "A"
SCALE 2:1

F = FULL RADIUS(12 PLACES)

 SYMBOL OF QUALITY AN ISO 9002 COMPANY	JINDAL ALUMINIUM LTD. BANGALORE-560073 (INDIA)	NAME	DATE
		DRAWN	PARVESH 30-10-2018
		CHECKED	
		APPROVED	B.NATARAJA 05-11-2018
		SCALE	1:1
		AREA mm ²	457.046
		PERIMETER mm.	419.189
		WEIGHT kg/m	1.234
PARTY'S NAME	UNIQUE PUNCH SYSTEMS PVT. LTD., BANGALORE	DRAWING No.	SECTION No.
PARTY'S DRAWING No.	AS PER SAMPLE	P-15442-2	-
ALLOY & TEMPER	HE9 WP	S4848	S4848(ISSUE-5)
		25837	25837
DESCRIPTION	ELECTRONIC SECTION		