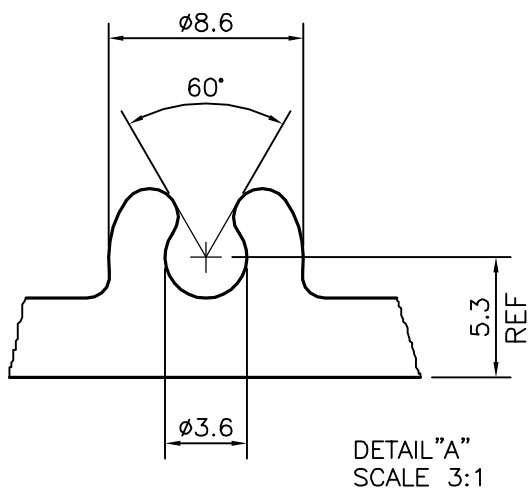
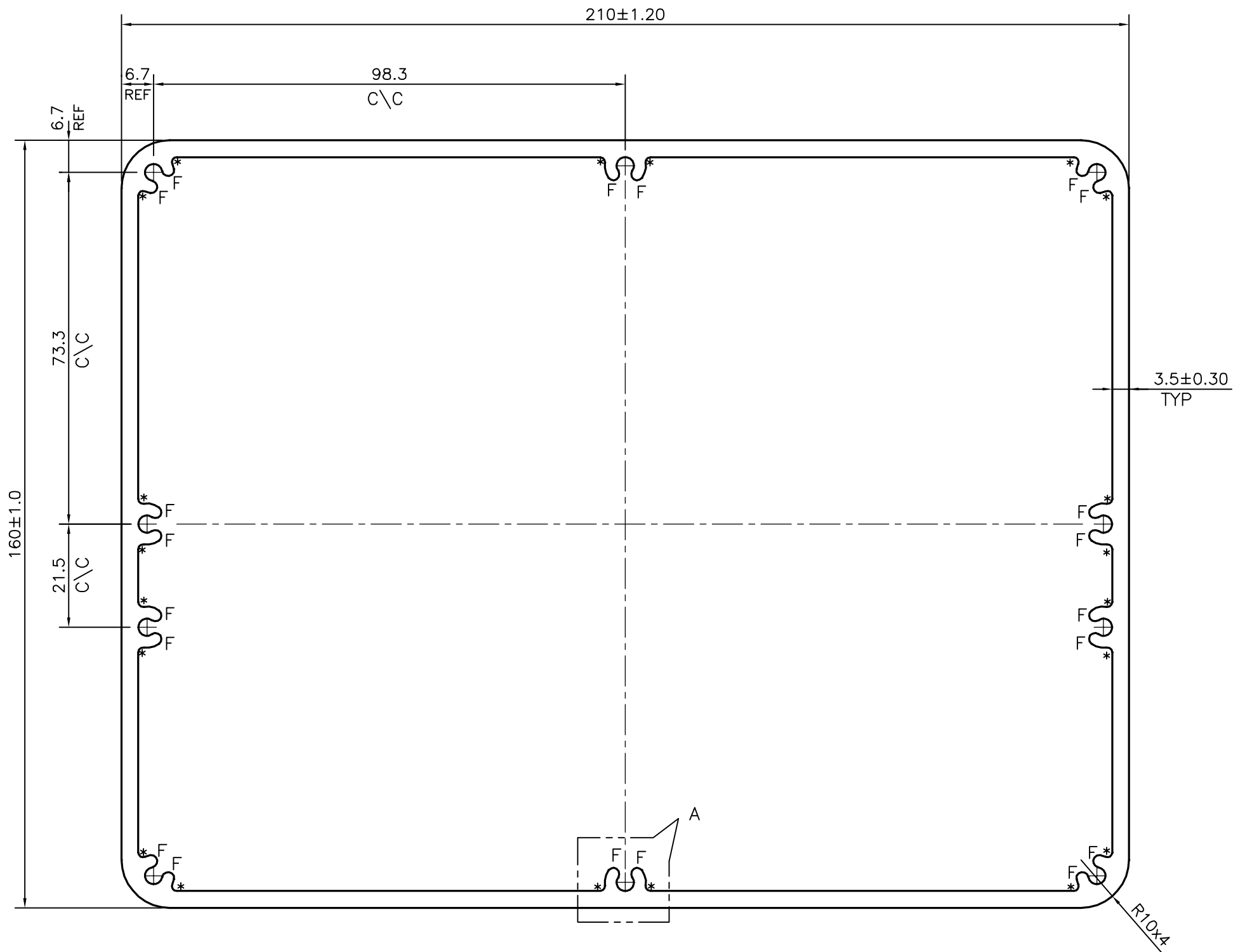



P-21194-1  
25841



1. STRAIGHTNESS=1.7mm/M
2. TWIST=1.7mm/M
3. ANGULARITY=  $\pm 2^\circ$
4. FLATNESS =0.006xWIDTH

F = FULL RADIUS (20 PLACES)  
\* = 1.0 RADIUS (20 PLACES)

 SYMBOL OF QUALITY AN ISO 9001 COMPANY	<b>JINDAL ALUMINIUM LTD.</b> BANGALORE-560073 (INDIA)	NAME	DATE
		DRAWN	J.P.KAUSHIK 31-08-2020
1. ALL DIMENSIONS ARE IN mm. 2. ROUND OFF ALL SHARP CORNERS WITH 0.40 mm. 3. TOLERANCES WILL BE AS PER BS:EN-12020-2 UNLESS OTHERWISE SPECIFIED		CHECKED	
		APPROVED	B.NATARAJA 28-09-2020
PARTY'S NAME EPITOME SUSTAINABLE ENERGY PVT. LTD., AHMEDNAGAR		SCALE	1:1
		AREA mm <sup>2</sup>	2730.691
PARTY'S DRAWING No. AS PER DRAWING		PERIMETER mm.	722.832
		WEIGHT kg/m	7.373
ALLOY & TEMPER 6063 T6		DRAWING No.	SECTION No.
		P-21194-1	-
DESCRIPTION CASE- TUBE SECTION		25841	25841