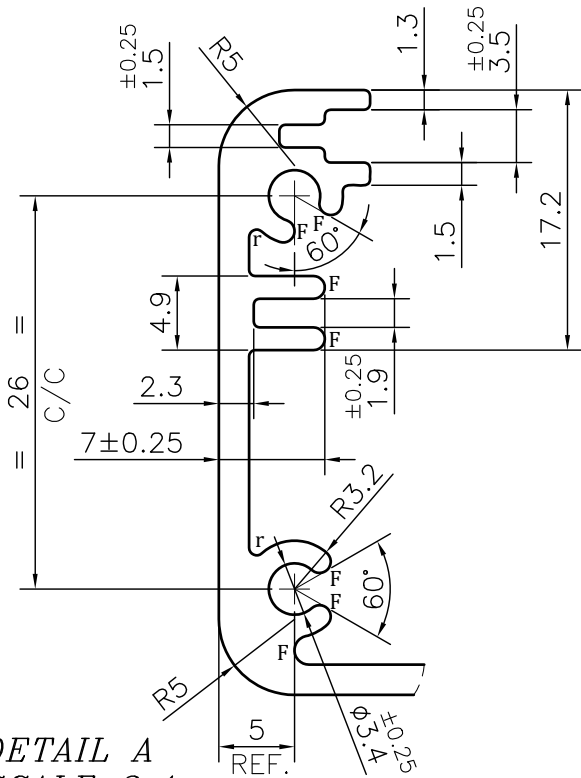
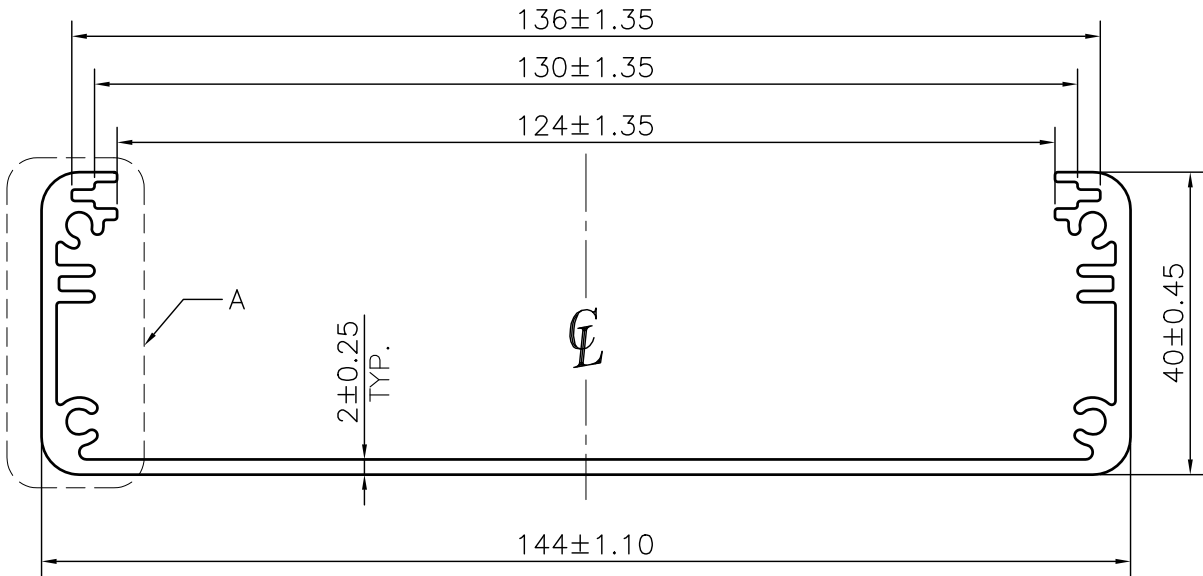


IAL-D-6411

25852



DETAIL A
SCALE 2:1

NOTE:-

r= 0.50 RADIUS (4 PLACES)
F= FULL RADIUS (14 PLACES)

1. STRAIGHTNESS= 1.7mm/M
2. TWIST= 1.7mm/M
3. ANGULARITY= $\pm 2^\circ$
4. FLATNESS= 0.007xWIDTH



SYMBOL OF QUALITY
AN ISO 9001 COMPANY

JINDAL ALUMINIUM LTD.
BHIWADI-301019 (INDIA)

	NAME	DATE
DRAWN	ASHUTOSH	30-09-2023
CHECKED		
APPROVED		
SCALE		1:1
AREA mm ²		586.642
PERIMETER mm.		558.51
WEIGHT kg/m		1.584
DRAWING No.	SECTION No.	
IAL-D-6411	-	
25852	25852	

1. ALL DIMENSIONS ARE IN mm.
2. ROUND OFF ALL SHARP CORNERS WITH 0.40 mm.
3. TOLERANCES WILL BE AS PER BS:EN-755-9 , UNLESS OTHERWISE SPECIFIED

PARTY'S NAME CASTMASTER MOBITEC INDIA PVT. LTD.

PARTY'S DRAWING No. AS PER DRAWING

ALLOY & TEMPER 6063 T6
PRODUCT CODE:-078
HSN CODE:- 76042990

DESCRIPTION ELECTRICAL SECTION