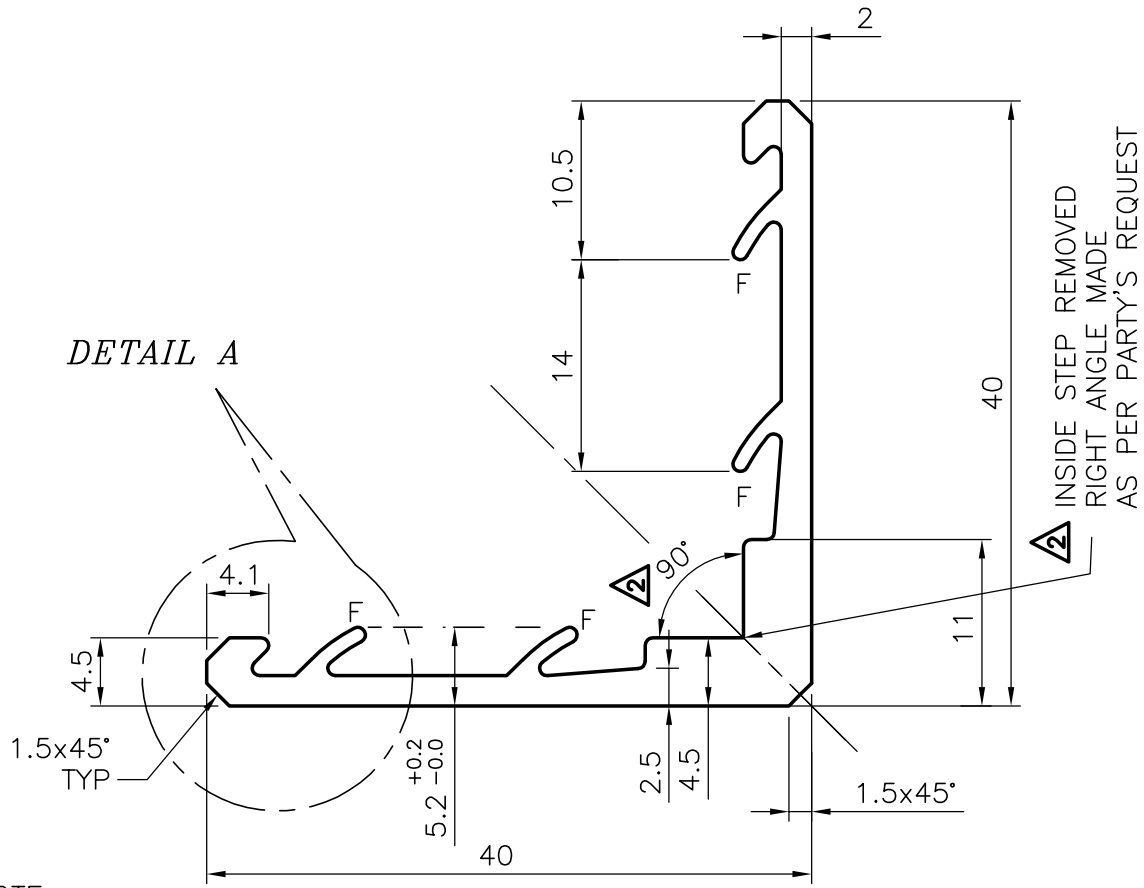
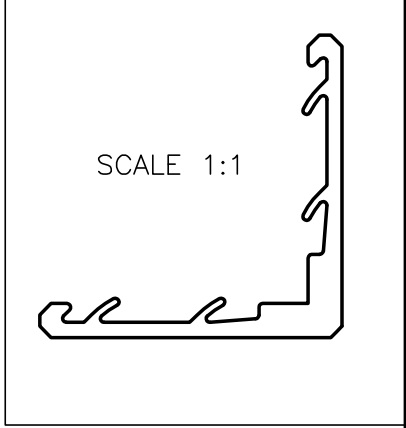
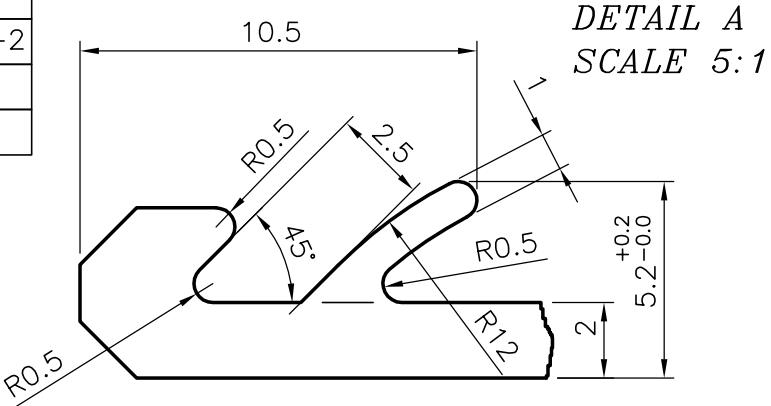



P-3168
S659-ISSUE-2
7145
26206



NOTE:-

- 1. F=FULL RADII(4-PLCS)
- 2. UNSPECIFIED RADII 0.5mm
- 3. GENERAL TOLERANCE ± 0.3
- 4. FLATNESS =0.3mm
- 5. STRAIGHTNESS=1.7mm/M
- 6. TWIST=1.7mm/M
- 7. ANGULARITY= $\pm 2^\circ$

 SYMBOL OF QUALITY AN ISO 9002 COMPANY	JINDAL ALUMINIUM LTD. BANGALORE-560073 (INDIA)	NAME	DATE
		DRAWN	RAGHAVENDRA 09-10-01
1. ALL DIMENSIONS ARE IN mm. 2. ROUND OFF ALL SHARP CORNERS WITH 0.40 mm. 3. TOLERANCES WILL BE AS PER IS 3965-1981 UNLESS OTHERWISE SPECIFIED		CHECKED	
		APPROVED	
PARTY'S NAME	TITAN ENERGY SYSTEMS LTD., SECUNDERABAD	SCALE	1:1, 2:1 & 5:1
PARTY'S DRAWING No.	AS PER DRAWING	WEIGHT kg/m	0.622
ALLOY & TEMPER	HE9 WP	PERIMETER	196.56mm
DESCRIPTION	INDUSTRIAL SECTION	SECTION No.	26206
		DRAWING No.	26206