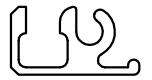


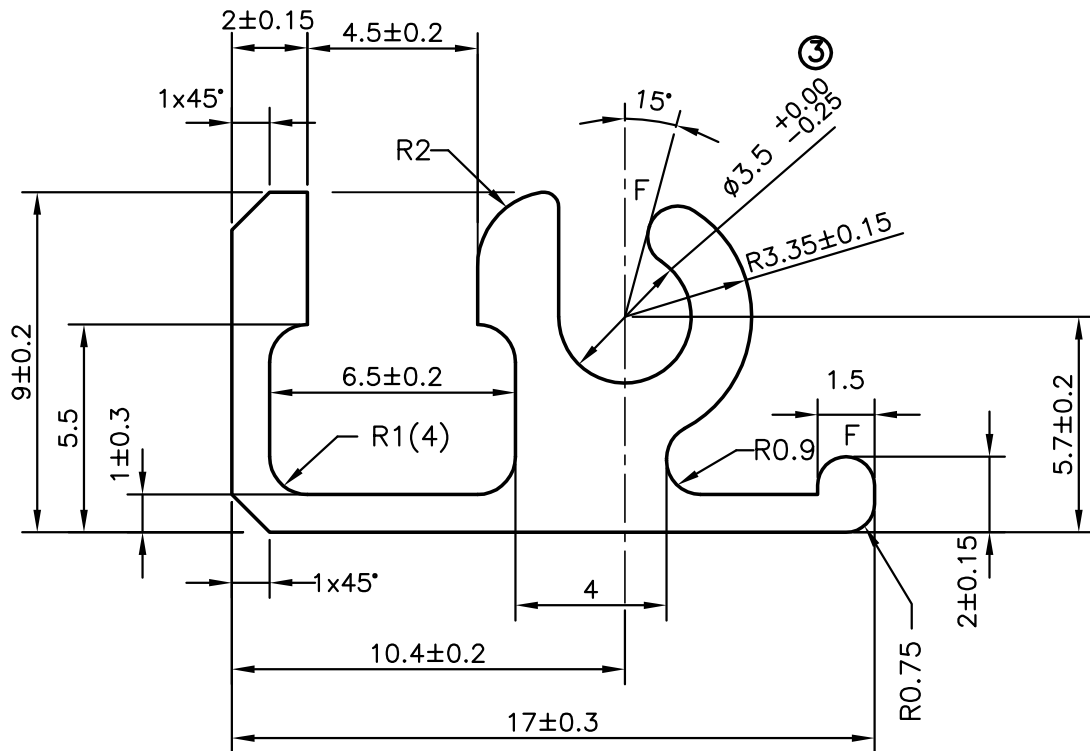
S062

9157

26233



1:1



ALL UNSPECIFIED WALL THICKNESS: -1.0 ± 0.30

F= FULL RADIUS (2)

ISSUE-2 TOLRANCE CHANGED FROM $\phi 3.65 \pm 0.15$ TO $\phi 3.65^{+0.00}_{-0.25}$

ISSUE-3 DIMENSION CHANGED FROM $\phi 3.65^{+0.00}_{-0.25}$ TO $\phi 3.50^{+0.00}_{-0.25}$

AND WEIGHT CHANGED FROM 0.161 Kg/m TO 0.163 KG/m



SYMBOL OF QUALITY
AN ISO 9001 COMPANY

JINDAL ALUMINIUM LTD.
BANGALORE-560073 (INDIA)

	NAME	DATE
DRAWN	PARVESH	29-05-2012
CHECKED		
APPROVED	J.N.RAI	05-06-2012

1. ALL DIMENSIONS ARE IN mm.
2. ROUND OFF ALL SHARP CORNERS WITH 0.40 mm.
3. TOLERANCES WILL BE AS PER IS:3965-1981 UNLESS OTHERWISE SPECIFIED

SCALE	5:1
AREA mm ²	60.394
PERIMETER mm.	79.801
WEIGHT kg/m	0.163
DRAWING No.	SECTION No.

PARTY'S NAME	TATA B.P. SOLAR INDIA LIMITED, BANGALORE	S062	S062
PARTY'S DRAWING No.	T001220 (ISSUE 0) & CUSTOMER REQUIREMENT	9157	9157
ALLOY & TEMPER	HE9 WP	26233	26233(ISSUE-3)
DESCRIPTION	LOW POWER MODULE EXT. PROFILE TYPE-1		