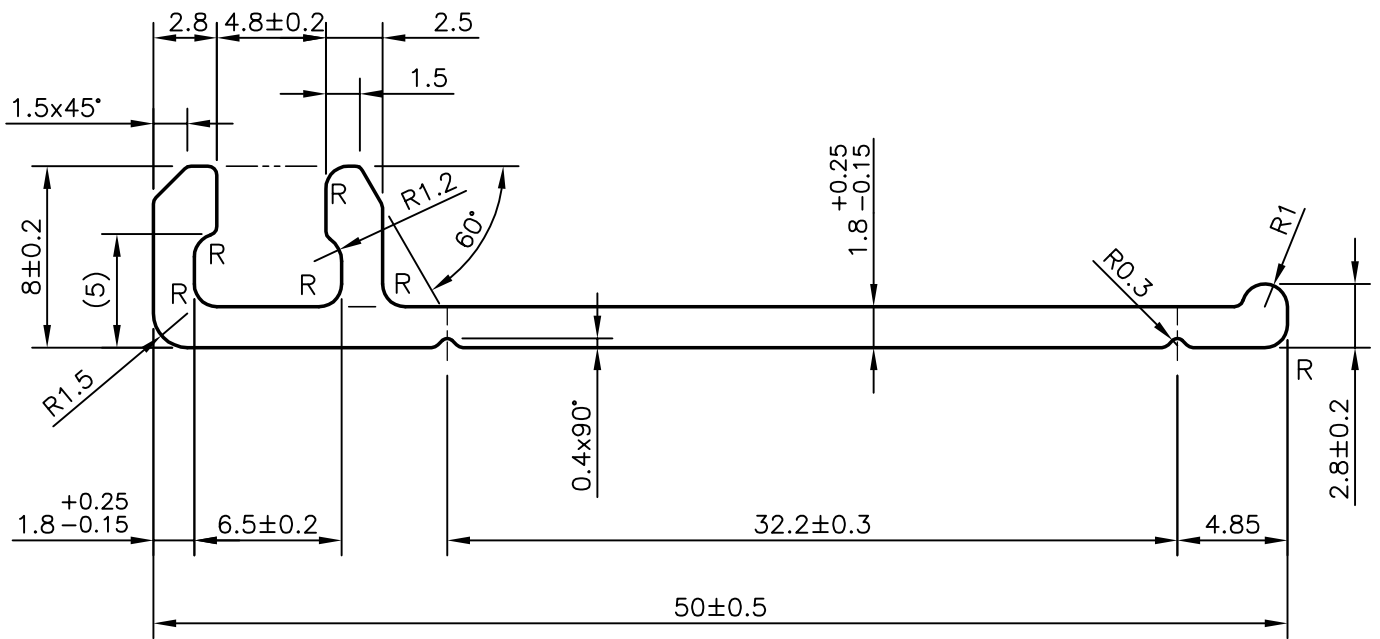
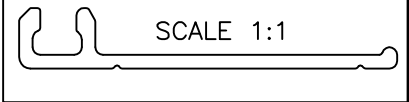


P-7801

26250



R = R1.0 mm (6 PLACES)



SYMBOL OF QUALITY
AN ISO 9001 COMPANY

JINDAL ALUMINIUM LTD.
BANGALORE-560073 (INDIA)

	NAME	DATE
DRAWN	PRASANNA. H	26-12-2007
CHECKED		
APPROVED		

1. ALL DIMENSIONS ARE IN mm.
2. ROUND OFF ALL SHARP CORNERS WITH 0.40 mm.
3. TOLERANCES WILL BE AS PER IS:3965-1981 UNLESS OTHERWISE SPECIFIED

SCALE	3:1
AREA mm ²	116.654
PERIMETER mm.	127.697
WEIGHT kg/m	0.315

PARTY'S NAME	ANOTECH ENGINEERS PVT. LTD., BANGALORE
PARTY'S DRAWING No.	4 679 02 00117
ALLOY & TEMPER	63400 WP
DESCRIPTION	SOLAR POWER SECTION

DRAWING No.	SECTION No.
P-7801	-
26250	26250