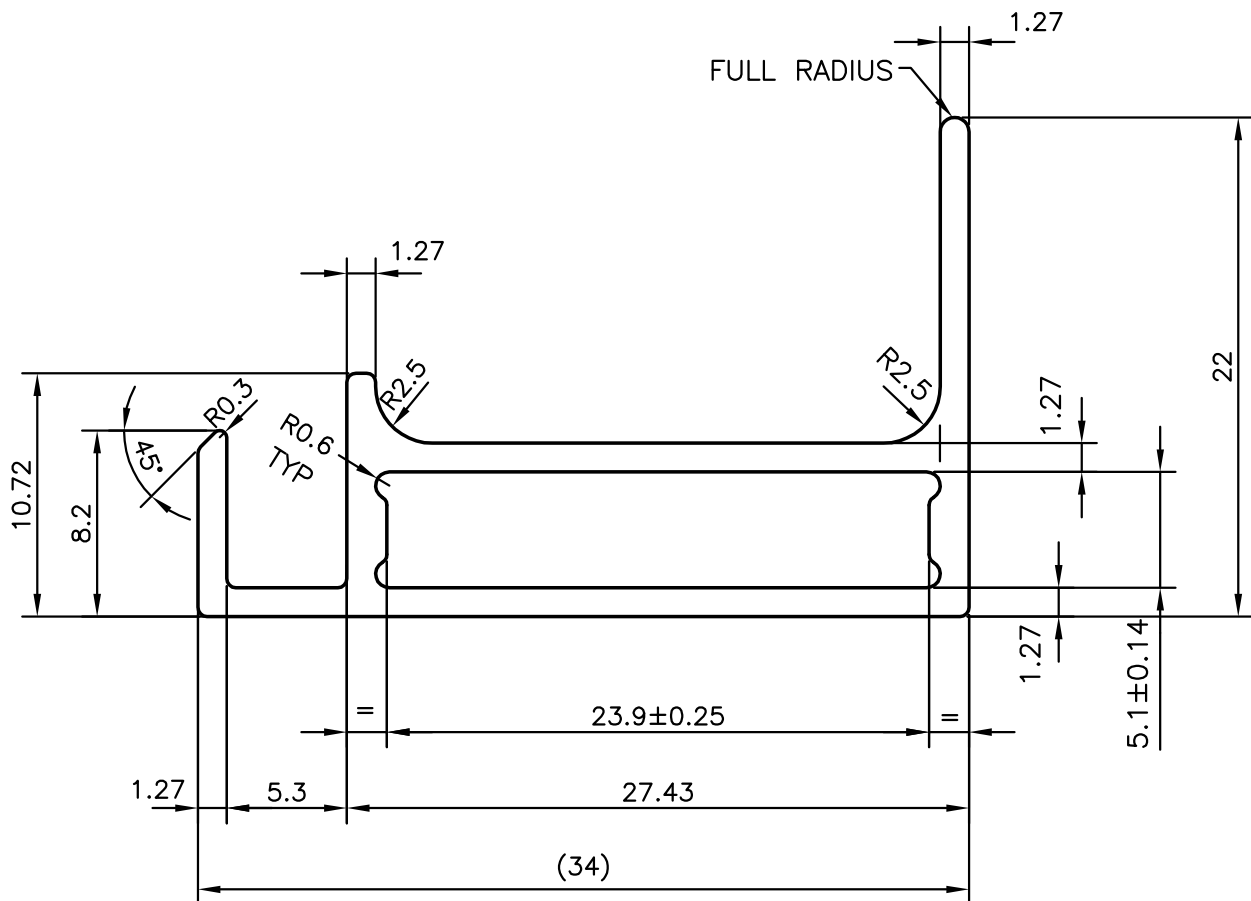
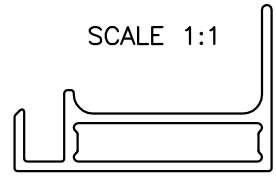


P-10301

S2695

26272

SCALE 1:1



TOLERANCE ON THICKNESS $1.27^{+0.25}_{-0.10}$ FOR INTERNAL USE (EXTRUSION, DIMENSION)
(SIZES KEPT ON PLUS SIDE FOR ANODIZING)



SYMBOL OF QUALITY
AN ISO 9001 COMPANY

JINDAL ALUMINIUM LTD.
BANGALORE-560073 (INDIA)

	NAME	DATE
DRAWN	J.P.KAUSHIK	11-08-2010
CHECKED		
APPROVED	S.S.GARG	17-01-2012
SCALE		3:1
AREA mm ²		127.223
PERIMETER mm.		127.645
WEIGHT kg/m		0.344
DRAWING No.	SECTION No.	
P-10301	-	
S2695	S2695	
26272	26272	

1. ALL DIMENSIONS ARE IN mm.
2. ROUND OFF ALL SHARP CORNERS WITH 0.40 mm.
3. TOLERANCES WILL BE AS PER IS:6477-1983 UNLESS OTHERWISE SPECIFIED

PARTY'S NAME	VIKRAM SOLAR PVT. LTD., KOLKATA
PARTY'S DRAWING No.	VSPL/PRN/117/10
ALLOY & TEMPER	HE9 WP
DESCRIPTION	SOLAR SECTION-PV FRAME 3.2mm. GLASS