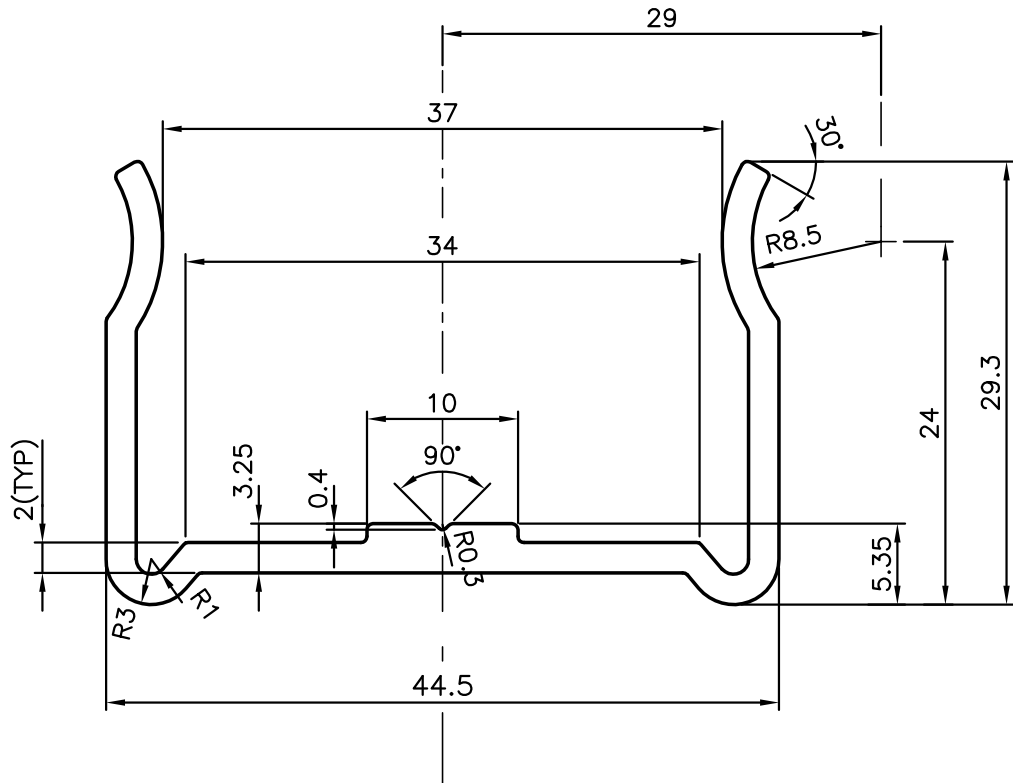
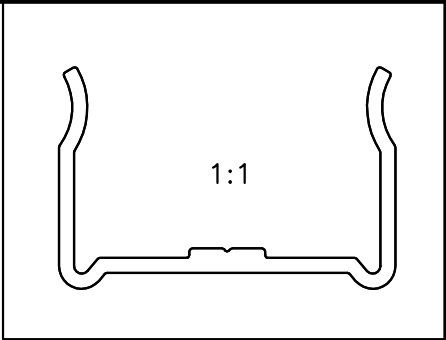



P-9461
S2304
26282



GENERAL WALL THICKNESS 2.0 mm

 SYMBOL OF QUALITY AN ISO 9001 COMPANY	<b>JINDAL ALUMINIUM LTD.</b> BANGALORE-560073 (INDIA)	DRAWN	NAME	DATE
		CHECKED	J.P.KAUSHIK	08-09-2009
1. ALL DIMENSIONS ARE IN mm. 2. ROUND OFF ALL SHARP CORNERS WITH 0.4mm. 3. TOLERANCES WILL BE AS PER IS:3965-1981 UNLESS OTHERWISE SPECIFIED		APPROVED		
		SCALE	2:1	
PARTY'S NAME HHV SOLAR TECHNOLOGIES PVT.LTD.,BANGLORE		AREA mm <sup>2</sup>	211.346	
		PERIMETER mm.	204.523	
PARTY'S DRAWING No. AS PER SAMPLE		WEIGHT kg/m	0.571	
		DRAWING No.	SECTION No.	
ALLOY & TEMPER HE9 WP		P-9461	-	
		S2304	S2304	
DESCRIPTION SOLAR SECTION		26282	26282	