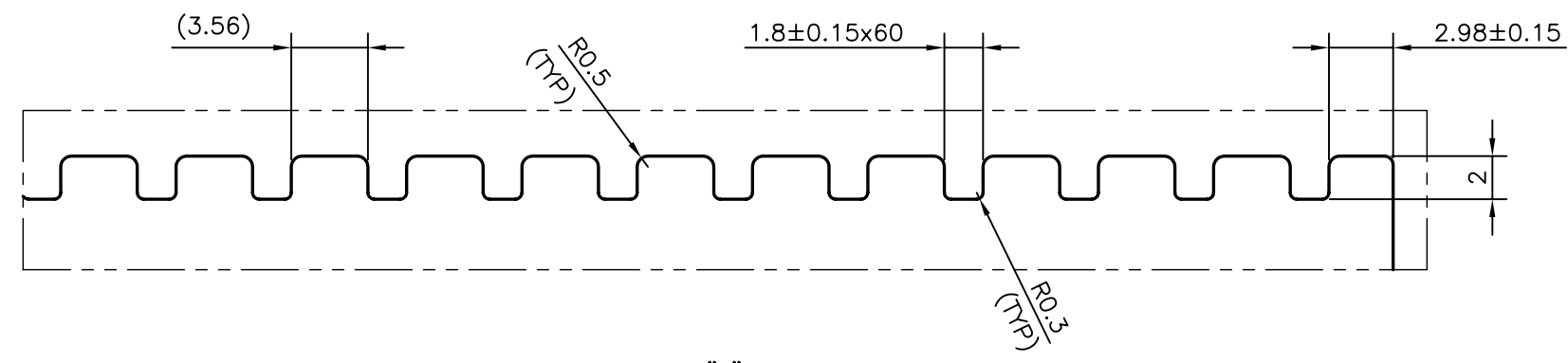
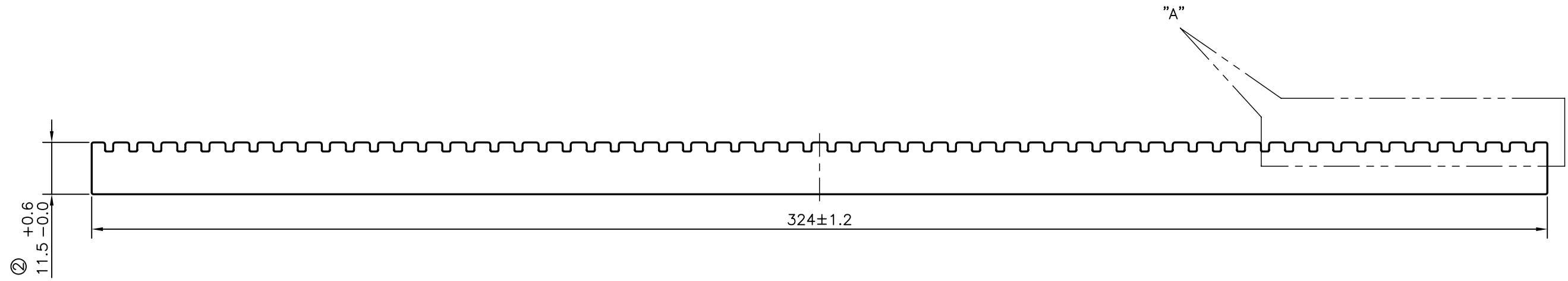


P-8385-1  
26411


② ISSUE-2

THICKNESS CHANGED FROM 11mm TO  $11.5^{+0.6}_{-0.0}$  mm  
& WEIGHT ALSO CHANGED ACCORDINGLY FROM 9.028 kg/M TO 9.466 kg/M



DETAIL OF "A"  
SCALE 3:1

BEND AND TWIST OF THE EXTRUSION BAR NOT MORE THAN 1.0 mm/mtr. LENGHT

 SYMBOL OF QUALITY AN ISO 9001 COMPANY	<b>JINDAL ALUMINIUM LTD.</b> BANGALORE-560073 (INDIA)	DRAWN	NAME	DATE
		CHECKED	J.P.KAUSHIK	15-06-2009
1. ALL DIMENSIONS ARE IN mm. 2. ROUND OFF ALL SHARP CORNERS WITH 0.40 mm. 3. TOLERANCES WILL BE AS PER IS:3965-1981 UNLESS OTHERWISE SPECIFIED		APPROVED		
		SCALE	1:1	
PARTY'S NAME MOTHERSON SUMI SYSTEM LTD., BANGALORE		AREA mm <sup>2</sup>	3505.742	
		PERIMETER mm.	869.11	
PARTY'S DRAWING No. GEHPS225A3-10		WEIGHT kg/m	9.466	
		DRAWING No.	SECTION No.	
ALLOY & TEMPER 6063 T6		P-8385-1	-	
		26411	26411(ISSUE-3)	
DESCRIPTION HEAT SINK SECTION				