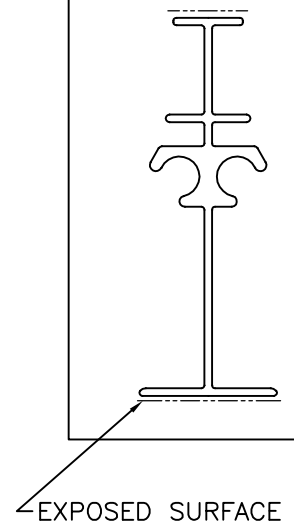
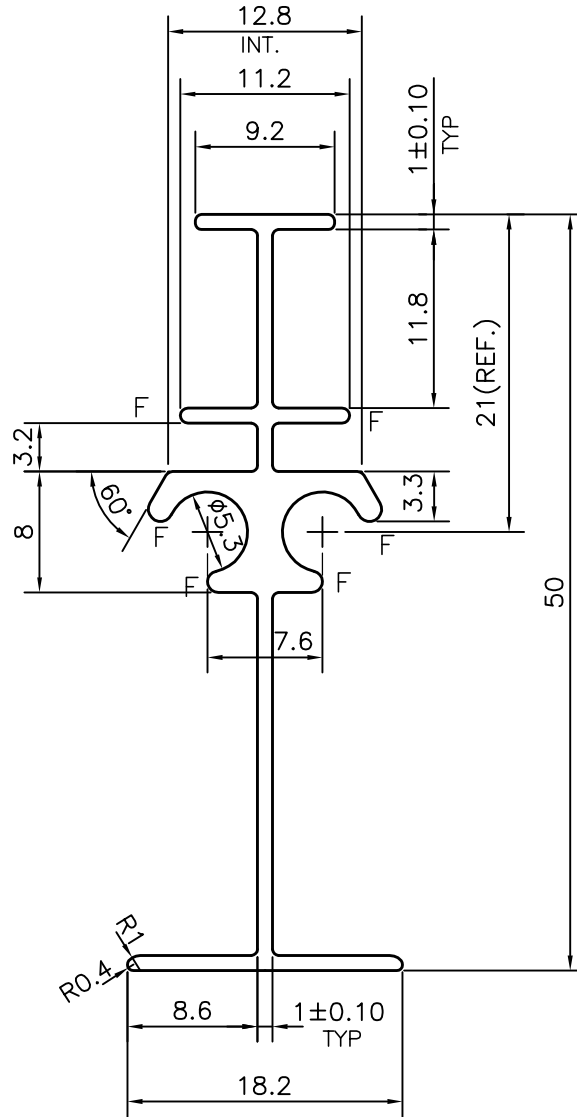


P-13915

26888



**ISSUE-2**

TOLERANCE ADDED ON THICKNESS  $1.0 \pm 0.10$

**TO MAINTAIN AVG. WEIGHT WITH IN  $\pm 10\%$**

(WEIGHT RANGE 0.318 Kg/M TO 0.388 Kg/M)

F = FULL RADIUS(6 PLACES)



SYMBOL OF QUALITY  
AN ISO 9001 COMPANY

**JINDAL ALUMINIUM LTD.**  
**BANGALORE-560073 (INDIA)**

	NAME	DATE
DRAWN	J.P.KAUSHIK	09-10-2014
CHECKED		
APPROVED	S.S.GARG	14-10-2014
SCALE		2:1
AREA mm <sup>2</sup>		130.786
PERIMETER mm.		205.128
WEIGHT kg/m		0.353
DRAWING No.	SECTION No.	
P-13915	-	
26888	26888(ISSUE-2)	

1. ALL DIMENSIONS ARE IN mm.
2. ROUND OFF ALL SHARP CORNERS WITH 0.40 mm.
3. TOLERANCES WILL BE AS PER,BS:EN-755-9 UNLESS OTHERWISE SPECIFIED

PARTY'S NAME	FAISAL JASSIM TRADING CO. (L.L.C.), UAE
PARTY'S DRAWING No.	MODIFIED OF SECTION No:-26536
ALLOY & TEMPER	6063 T6
DESCRIPTION	AIR GRILL SECTION