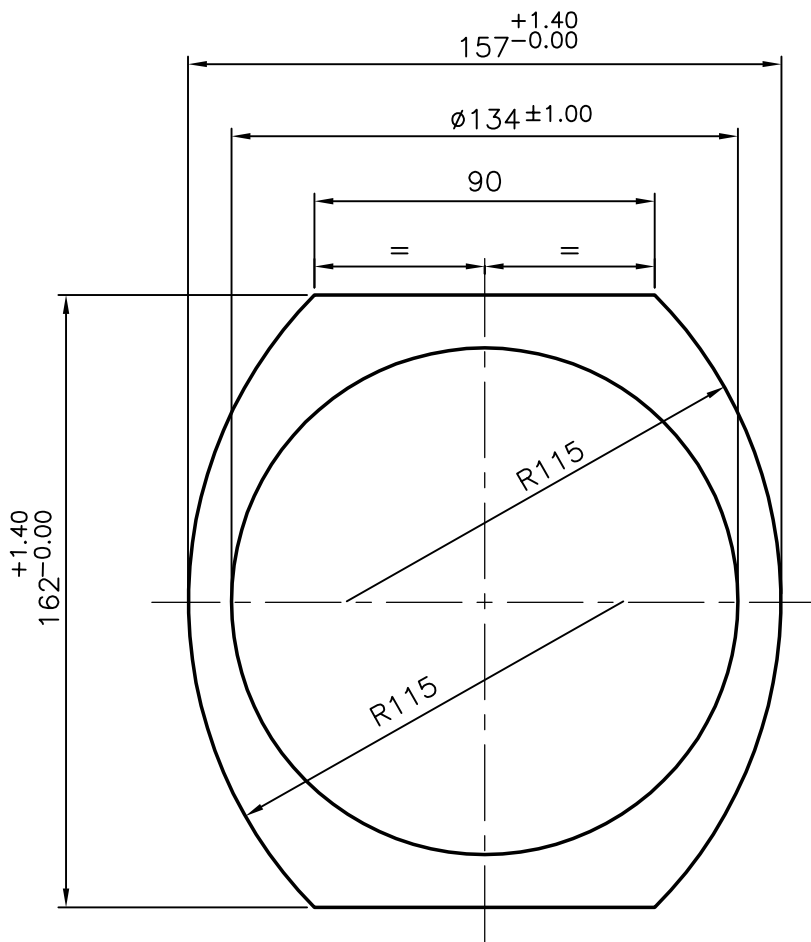


9042


27019

—



NOTE:—

1. BORE MACHINING SIZE FOR PISTON DRIVE I.S. — $\phi 139.7$.
2. MAX. 1.7mm BEND IN ONE METER LENGTH.
3. TOLERANCE ON RADIUS $\pm 1\%$.

| | | | | | | |
|--|---|--|---------|--------------------------------------|-------------|-----------------------|
|  SYMBOL OF QUALITY AN ISO 9002 COMPANY | JINDAL ALUMINIUM LTD. BANGALORE-560073 (INDIA) | | | NAME | DATE | |
| | | | | DRAWN | S.KUMAR | 8-6-82 |
| 1. ALL DIMENSIONS ARE IN mm 2. ROUND OFF SHARP CORNERS WITH 0.4mm R 3. TOLERANCES WILL BE AS PER IS : 3000-XXXX 6477-1983 | | | | CHECKED | | |
| | | | | APPROVED | | |
| PARTY'S NAME | | PRIMA CONTROLS(P) LTD. POONA/BOMBAY | | SCALE | 1:2 | |
| PARTY'S DRAWING No. | | PRC-0006/1/EXT. | FINISH | — | WEIGHT kg/m | 21.513 |
| ALLOY & TEMPER | | HE 30 WP | LENGTH: | — | SECTION No. | XXXX 27019 |
| DESCRIPTION | | ACTUATOR BODY | | DRAWING No. XXXX 27019 | | |