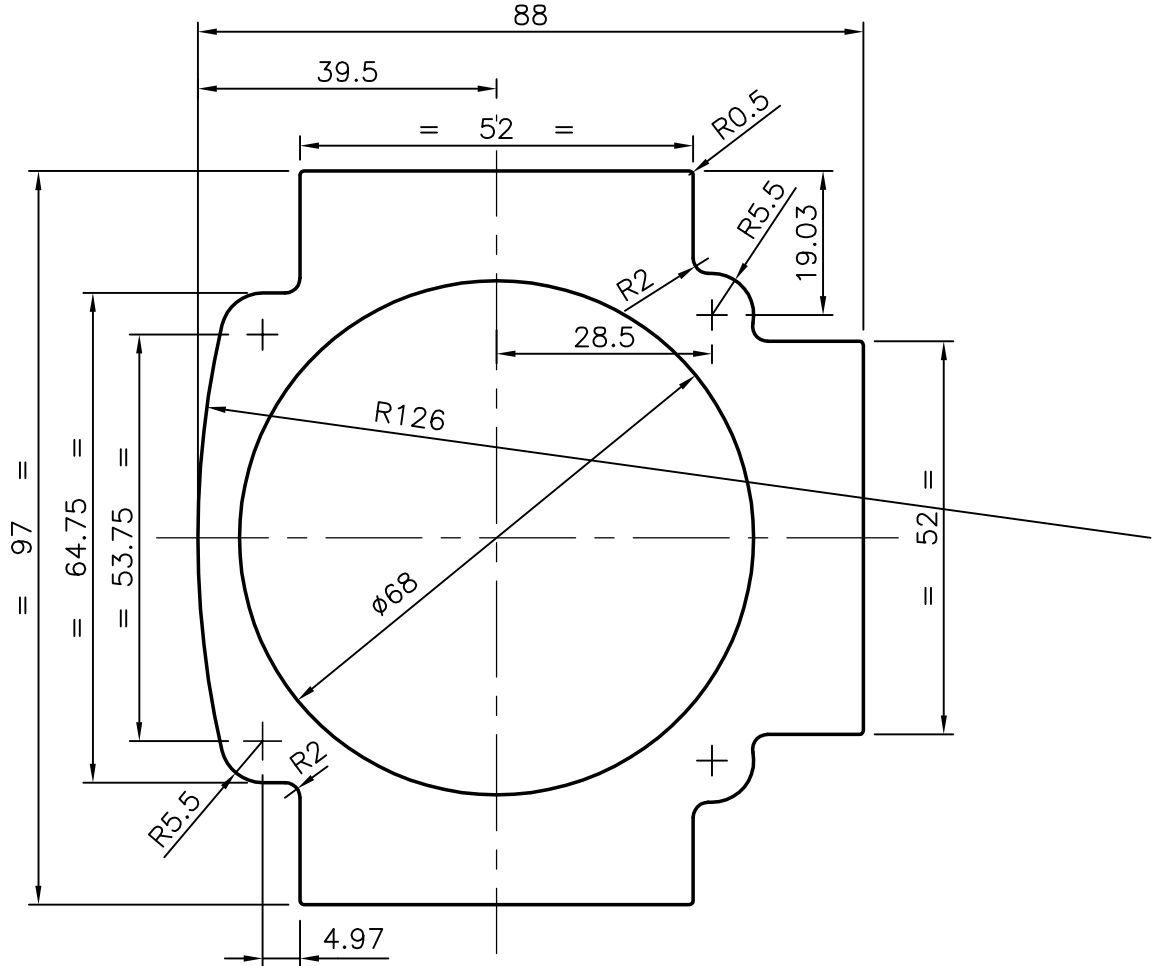


P-4819

S1199

27045



SYMBOL OF QUALITY
AN ISO 9002 COMPANY

JINDAL ALUMINIUM LTD.
BANGALORE-560073 (INDIA)

| | NAME | DATE |
|----------|------------|------------|
| DRAWN | MALINGAPPA | 30.03.2004 |
| CHECKED | | |
| APPROVED | | |

1. ALL DIMENSIONS ARE IN mm.
2. ROUND OFF ALL SHARP CORNERS WITH 0.40 mm.
3. TOLERANCES WILL BE AS PER IS: 6477-1983 UNLESS OTHERWISE SPECIFIED

| | |
|----------------------|---------|
| SCALE | 1:1 |
| AREA mm ² | 3493.10 |
| PERIMETER mm. | 348.81 |
| WEIGHT kg/m | 9.431 |

PARTY'S NAME NISHAKA PNEUMATICS, THANE

DRAWING No. SECTION No.

PARTY'S DRAWING No. 246-01-102

P-4819 -

ALLOY & TEMPER HE9 WP

S1199 S1199

27045 27045

DESCRIPTION ACTUATOR BODY