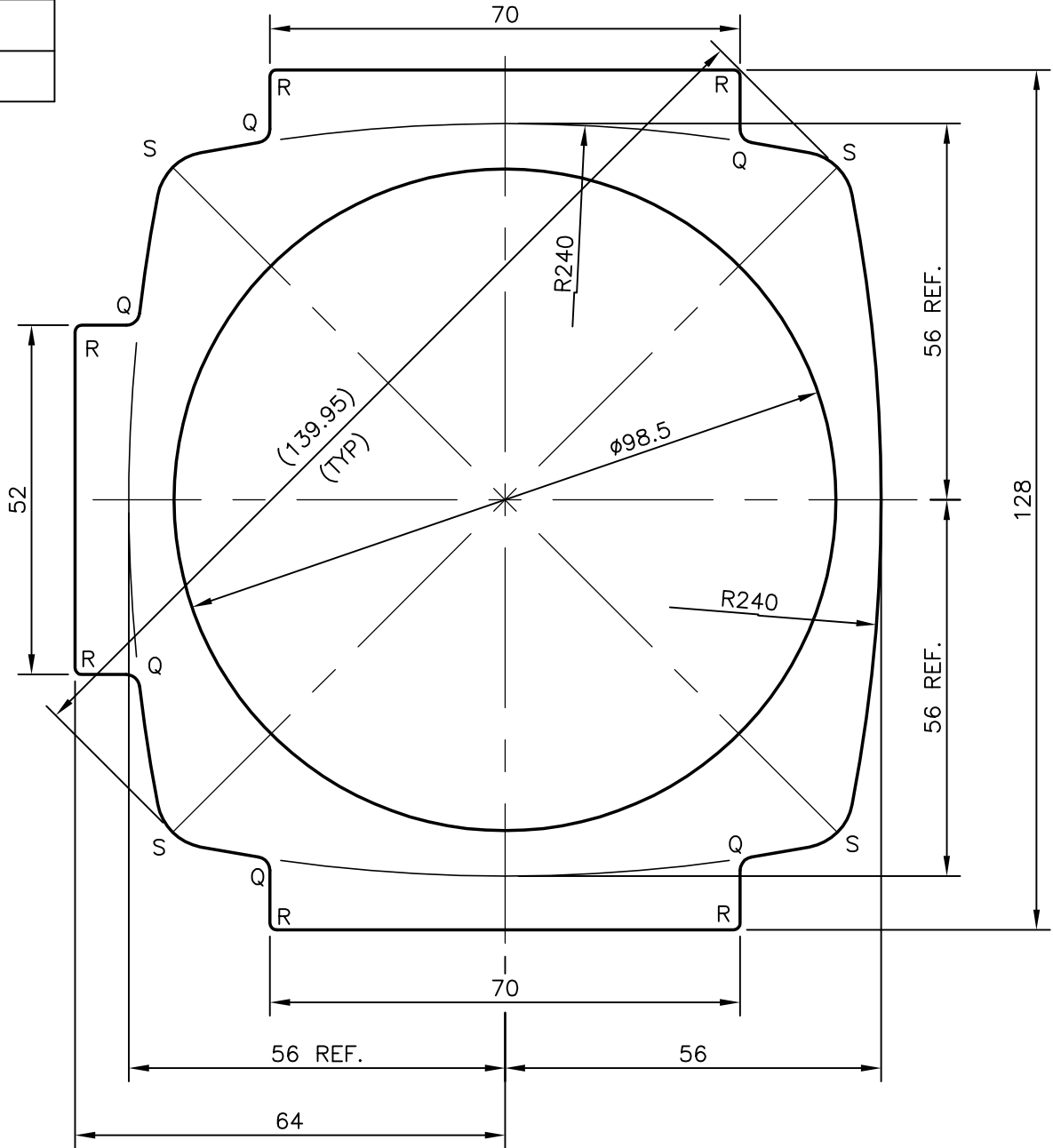


P-7036

S1958

27086



NOTE:-

1. S = R8.0 mm (4 PLACES)
2. Q = R2.0 mm (6 PLACES)
3. R = R1.0 mm (6 PLACES)



SYMBOL OF QUALITY
AN ISO 9001 COMPANY

JINDAL ALUMINIUM LTD.
BANGALORE-560073 (INDIA)

	NAME	DATE
DRAWN	PRASANN.H	16-02-2007
CHECKED		
APPROVED		
SCALE		1:1
AREA mm ²		5744.841
PERIMETER mm.		457.169
WEIGHT kg/m		15.511
DRAWING No.	SECTION No.	
P-7036	-	
S1958	S1958	
27086	27086	

1. ALL DIMENSIONS ARE IN mm.
2. ROUND OFF ALL SHARP CORNERS WITH 0.50 mm.
3. TOLERANCES WILL BE AS PER IS:6477-1983 UNLESS OTHERWISE SPECIFIED

PARTY'S NAME	NISHAKA PNEUMATICS, THANE
PARTY'S DRAWING No.	NP/50101/AB-001-ED
ALLOY & TEMPER	6063 T6
DESCRIPTION	ACTUATOR-BODY