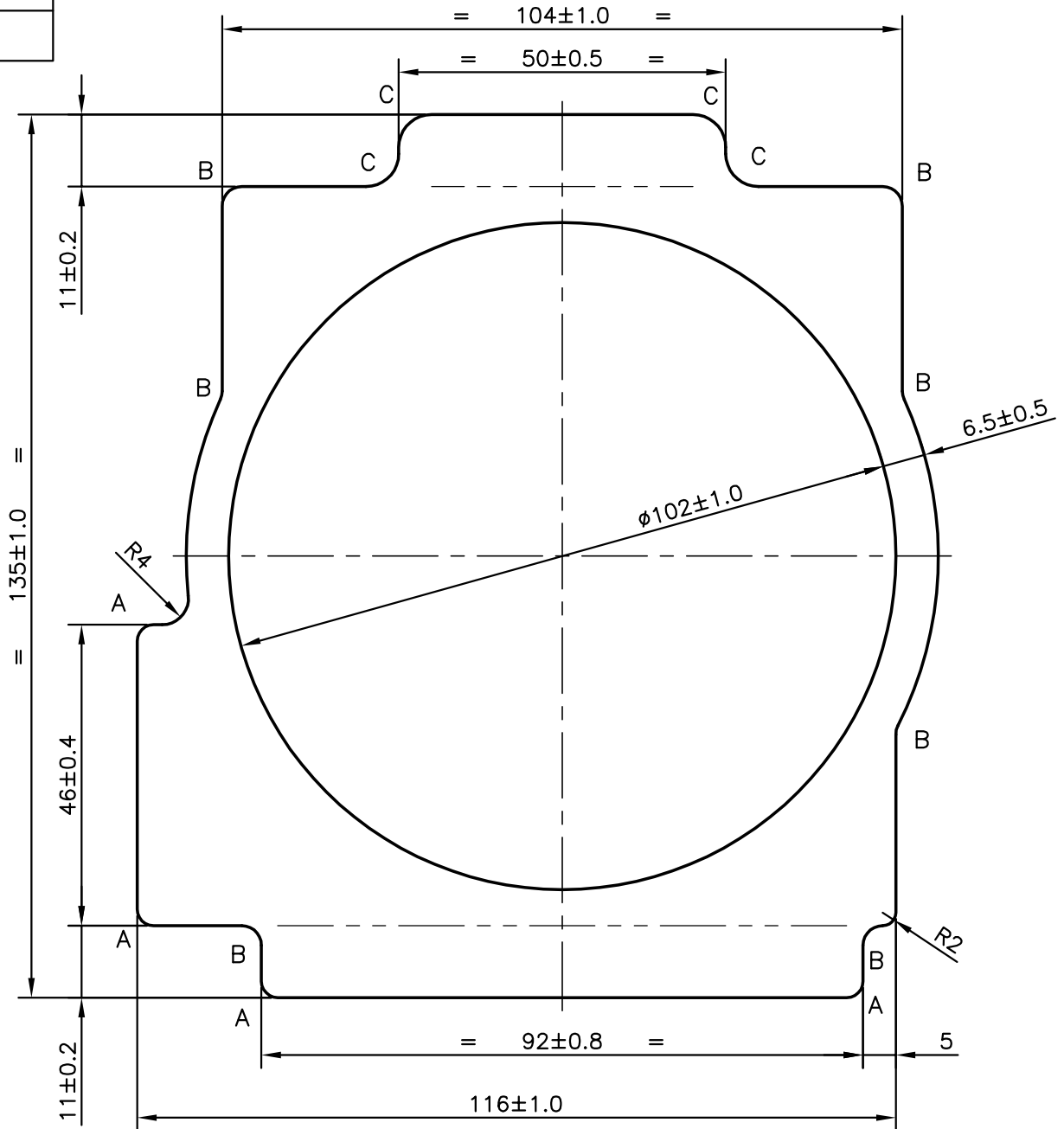


P-9344-1

S2197

27095



A = R2.5 (4 PLACES)
 B = R3 (7 PLACES)
 C = R5 (4 PLACES)

OVALITY = ±1% OF THE DIAMETER
STRAIGHTNESS = 1.7mm/M



SYMBOL OF QUALITY
 AN ISO 9001 COMPANY

JINDAL ALUMINIUM LTD.
 BANGALORE-560073 (INDIA)

	NAME	DATE
DRAWN	PRASANNA.H	29-06-2009
CHECKED		
APPROVED		

1. ALL DIMENSIONS ARE IN mm.
2. ROUND OFF ALL SHARP CORNERS WITH 0.40 mm.
3. TOLERANCES WILL BE AS PER IS:6477-1983 UNLESS OTHERWISE SPECIFIED

SCALE	1:1
AREA mm ²	6035.315
PERIMETER mm.	479.861
WEIGHT kg/m	16.295

PARTY'S NAME	BDK ENGG. IND. LTD., HUBLI
PARTY'S DRAWING No.	PA105B01D053
ALLOY & TEMPER	6005 T6
DESCRIPTION	ACTUATOR BODY SECTION

DRAWING No.	SECTION No.
P-9344-1	-
S2197	S2197
27095	27095