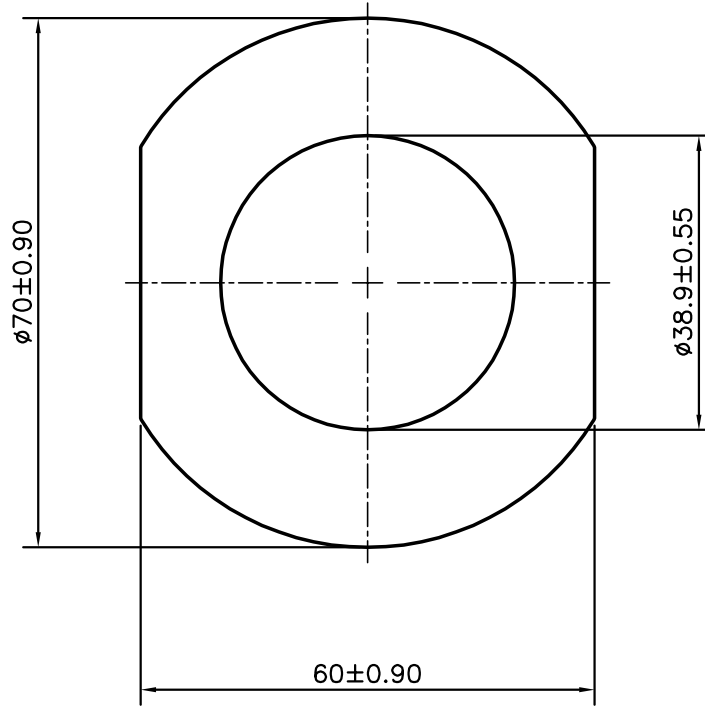


P-11620

S3239

27099



SYMBOL OF QUALITY  
AN ISO 9001 COMPANY

**JINDAL ALUMINIUM LTD.**  
**BANGALORE-560073 (INDIA)**

	NAME	DATE
DRAWN	PARVESH	27-03-2012
CHECKED		
APPROVED	S.S.GARG	31-03-2012
SCALE		1:1
AREA mm <sup>2</sup>		2415.946
PERIMETER mm.		216.247
WEIGHT kg/m		6.523
DRAWING No.		SECTION No.
P-11620		-
S3239		S3239
27099		27099

1. ALL DIMENSIONS ARE IN mm.
2. ROUND OFF ALL SHARP CORNERS WITH 0.40 mm.
3. TOLERANCES WILL BE AS PER IS:6477-1983, UNLESS OTHERWISE SPECIFIED

PARTY'S NAME	G.I. AUTO PVT. LTD., BANGALORE
PARTY'S DRAWING No.	690790
ALLOY & TEMPER	6061 T6
DESCRIPTION	PUMP BODY