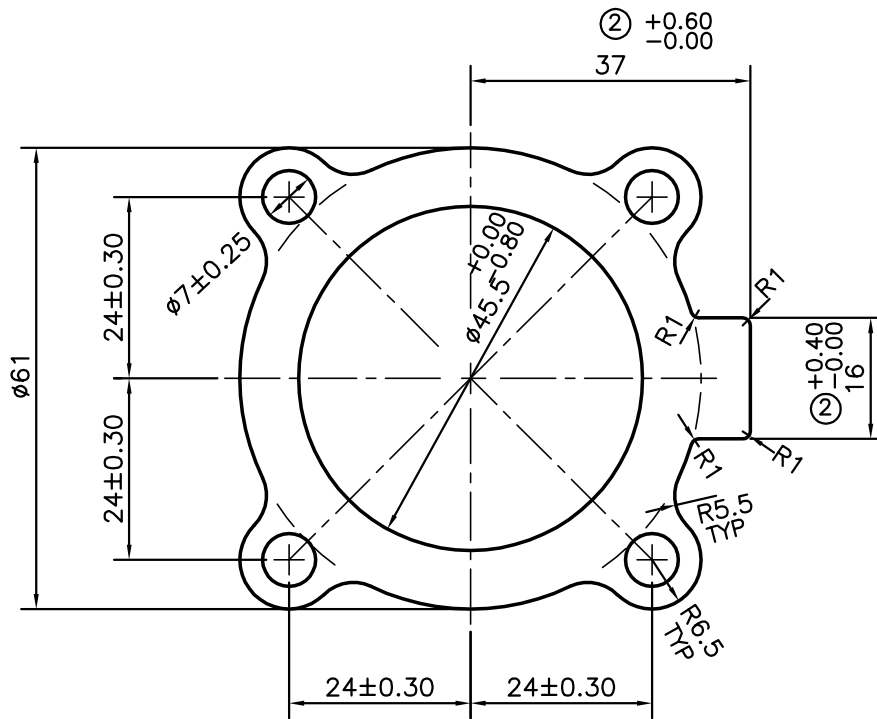


P-10597-1

S2779

27101



ISSUE-2 :-

TOLERANCE ADDED ON $37\text{mm}^{+0.60}_{-0.00}$ & $16\text{mm}^{+0.40}_{-0.00}$

TOLERANCES ON OVERALL WIDTHS & WIDTHS ACROSS FLATS OF BARS, & REGULAR SECTIONS

UPTO 6.40mm - ±0.20	UPTO 32.0mm - ±0.38	UPTO 120.0mm - ±0.85	UPTO 320.00mm - ±1.70
UPTO 10.0mm - ±0.23	UPTO 50.0mm - ±0.46	UPTO 160.0mm - ±1.02	
UPTO 12.0mm - ±0.25	UPTO 60.0mm - ±0.53	UPTO 200.0mm - ±1.14	
UPTO 16.0mm - ±0.28	UPTO 80.0mm - ±0.69	UPTO 250.0mm - ±1.40	
UPTO 25.0mm - ±0.30	UPTO 100.0mm - ±0.75	UPTO 300.0mm - ±1.65	



SYMBOL OF QUALITY
AN ISO 9001 COMPANY

JINDAL ALUMINIUM LTD.
BANGALORE-560073 (INDIA)

	NAME	DATE
DRAWN	J.P.KAUSHIK	31-12-2010
CHECKED		
APPROVED	S.S.GARG	08-01-2011

- ALL DIMENSIONS ARE IN mm.
- ROUND OFF ALL SHARP CORNERS WITH 0.40 mm.
- TOLERANCES WILL BE AS PER, IS:6477-1983 UNLESS OTHERWISE SPECIFIED

SCALE	1:1
AREA mm ²	1733.157
PERIMETER mm.	258.216
WEIGHT kg/m	4.680

PARTY'S NAME	HYVA INDIA PVT. LTD., MUMBAI	DRAWING No.	P-10597-1	SECTION No.	-
PARTY'S DRAWING No.	E069497 REV A		S2779		S2779(ISSUE-2)
ALLOY & TEMPER	6061 T6		27101		27101
DESCRIPTION	PT-S VALVE				